



**DG**  
**WEST**



**Reportage.**  
Africa

## About Reportage Group

Reportage Group is one of the largest private developers in the United Arab Emirates, with projects across the UAE, Kenya, Uganda, Rwanda, Nigeria, Egypt, Turkey, Morocco, Saudi Arabia, Azerbaijan, Pakistan, and other international markets.

Since 2014, we have been building legacies in the UAE and beyond, committed to shaping communities that combine innovation with accessibility. Our focus is clear: to create homes that deliver strong value for investors while providing residents with comfort, quality, and a true sense of belonging.

**OWN YOUR STORY**



Welcome to

# Nairobi, Kenya

## The Pulse of East Africa

Nairobi is a city on the move. It is where enterprise meets culture, and where Africa's future takes shape. A hub of business, technology, and lifestyle, it has become a global magnet for opportunity.

At the heart of this transformation lies **Westlands** a district where growth, lifestyle, and international connection converge. It is the center of Nairobi's cosmopolitan energy.



# The Crown of Westlands

On Sports Road, in the beating heart of Westlands, **DG West** emerges as a bold new landmark.

A mixed-use tower of **Residential and Hotel Apartments**, it blends the pace of city life with the comfort of refined living.

DG West is not just a home; it is a statement of ambition, designed for those who want to live where the city's pulse beats the strongest.





## Nairobi Living, Elevated

---

The story of Nairobi is being written in its skyline, a canvas of ambition, culture, and progress. Nowhere is this transformation more alive than in Westlands, the city's beating heart of commerce, lifestyle, and global connection.

Amidst this surge of growth, one address is poised to stand above the rest. On the prestigious Sports Road, a new icon begins to rise: DG West Residential & Hotel Apartments.

This is not merely architecture; it is a symbol. A destination where design meets distinction, where everyday living is elevated into an experience, and where investment is not just preserved, but multiplied.

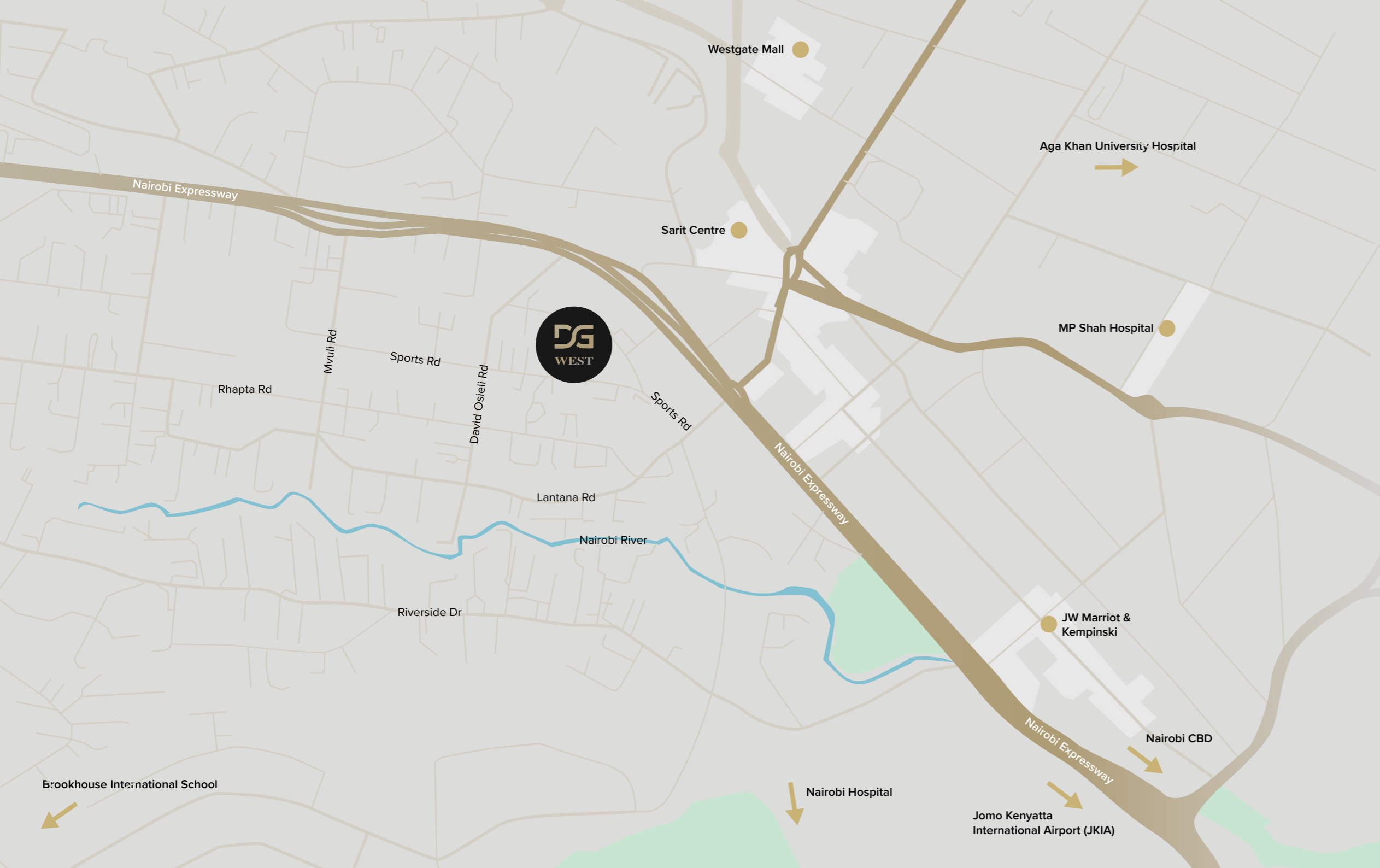
DG West is the rare convergence of luxury, location, and lifestyle, a landmark that redefines what it means to live, prosper, and belong in Nairobi's most sought-after district.

## World-Class Amenities

- Rooftop infinity pool with skyline views
- Modern fitness center & yoga garden
- Residents' lounge and private dining spaces
- Kids' daycare & play area
- 24-hour concierge and reception
- Business and conference facilities
- Valet parking & podium levels
- Retail and convenience outlets within the tower
- Dedicated pet-friendly facilities



A Skyline That Matches  
Your Ambition



# Location Features

Surrounded by embassies and international organizations  
Close to global schools and universities

- 05** Minutes to Sarit Centre
- 08** Minutes to Westgate Mall
- 08** Minutes to JW Marriot & Kempinski
- 09** Minutes to MP Shah Hospital
- 10** Minutes to Nairobi CBD
- 13** Minutes to Nairobi Hospital
- 15** Minutes to Aga Khan University Hospital
- 19** Minutes to the UN
- 20** Minutes to Jomo Kenyatta International Airport (JKIA)
- 23** Minutes to Wilson Airport
- 28** Minutes to Brookhouse International School



Where Business  
Meets Lifestyle



Nairobi's Urban Life,  
Refined

# Project Details

Type	High-rise Residential & Hotel Apartments
Levels	25 Floors
Location	Sports Road, Westlands, Nairobi
Developer	Reportage Group
Unit Mix	Studios, 1BR, 2BR
Total Units	200 Units
Status	Pre-launch / Under Construction / Sales Open



From Sunrise to  
City Lights



Designed for  
**the City Achiever**

---



Comfort in the  
**Middle of Progress**

---





## Unit Mix

**Studios – 80 units**

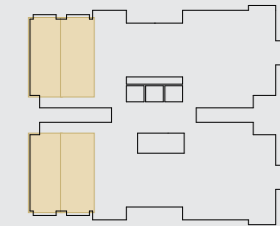
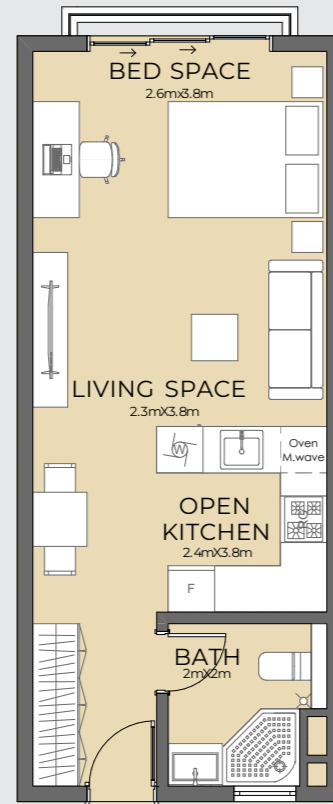
**1 Bedroom Apartments – 80 units**

**2 Bedroom Apartments – 40 units**

**Total: 200 units**

# Studio

5<sup>TH</sup> - 24<sup>TH</sup> Floor Plan

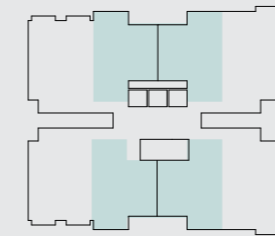
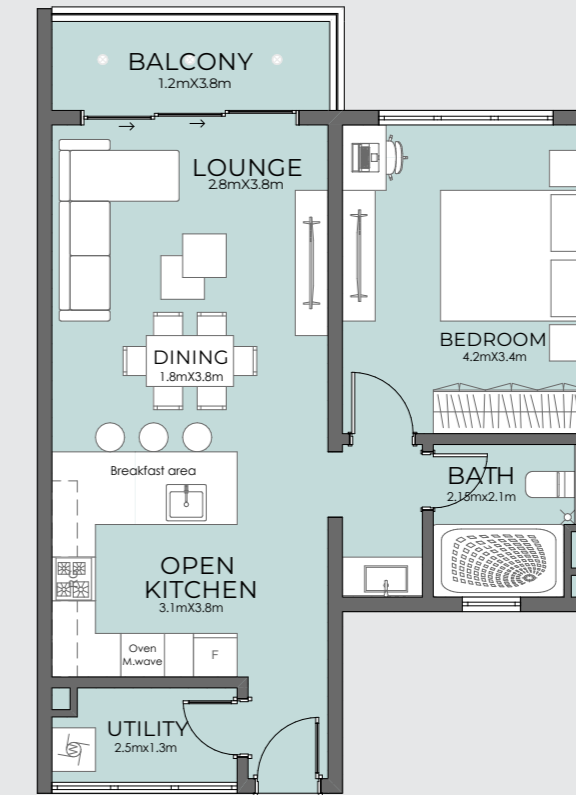


Internal Area	<b>41 SQM</b>
External Area	-
<b>Total Area</b>	<b>41 SQM</b>

All drawings and dimensions are approximate. Drawings are not to scale and are subject to change without notice. The developer reserves the right to make revisions. The units are measured at typical floors in the building and columns may vary in size depending on the floor level. The furnishing and accessories shown are for representation only. The availability, length and width of the balcony varies depending on which floor and which orientation the unit is located within the building. There will be slight differences in the internal areas between the same unit types depending on the shaft sizes that go through the units

# One Bedroom

5<sup>TH</sup> - 24<sup>TH</sup> Floor Plan

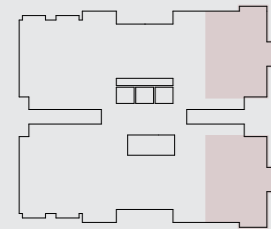
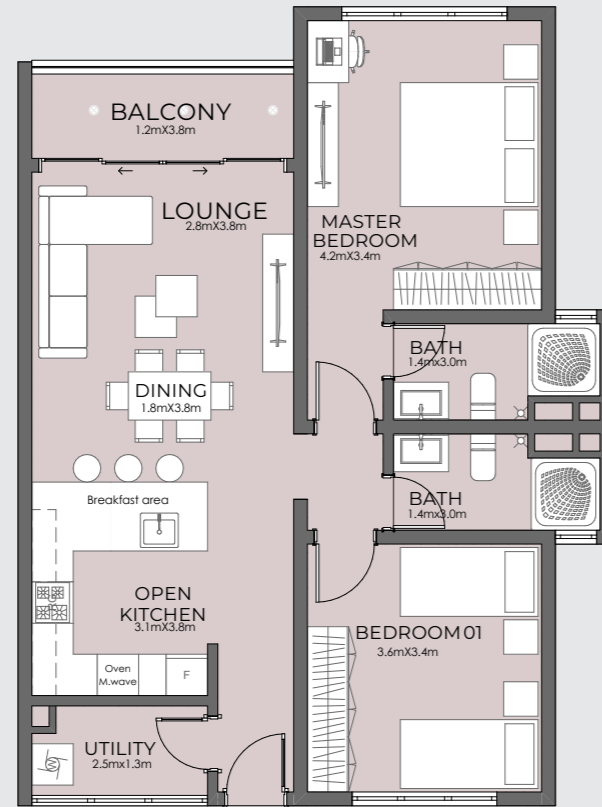


Internal Area	<b>65 SQM</b>
External Area	<b>5 SQM</b>
<b>Total Area</b>	<b>70 SQM</b>

All drawings and dimensions are approximate. Drawings are not to scale and are subject to change without notice. The developer reserves the right to make revisions. The units are measured at typical floors in the building and columns may vary in size depending on the floor level. The furnishing and accessories shown are for representation only. The availability, length and width of the balcony varies depending on which floor and which orientation the unit is located within the building. There will be slight differences in the internal areas between the same unit types depending on the shaft sizes that go through the units

# Two Bedroom

5<sup>TH</sup> - 24<sup>TH</sup> Floor Plan



Internal Area	85 SQM
External Area	5 SQM
<b>Total Area</b>	<b>90 SQM</b>

All drawings and dimensions are approximate. Drawings are not to scale and are subject to change without notice. The developer reserves the right to make revisions. The units are measured at typical floors in the building and columns may vary in size depending on the floor level. The furnishing and accessories shown are for representation only. The availability, length and width of the balcony varies depending on which floor and which orientation the unit is located within the building. There will be slight differences in the internal areas between the same unit types depending on the shaft sizes that go through the units

DG  
WEST

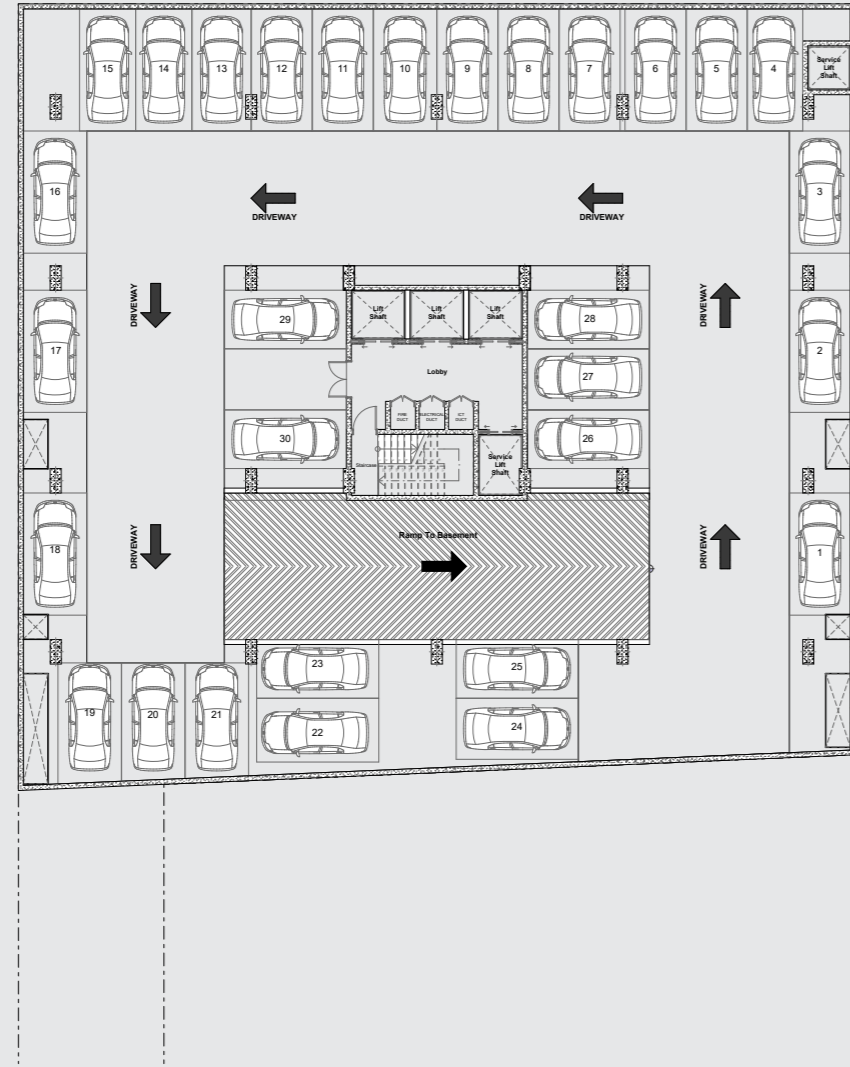
# Floor Plan

---



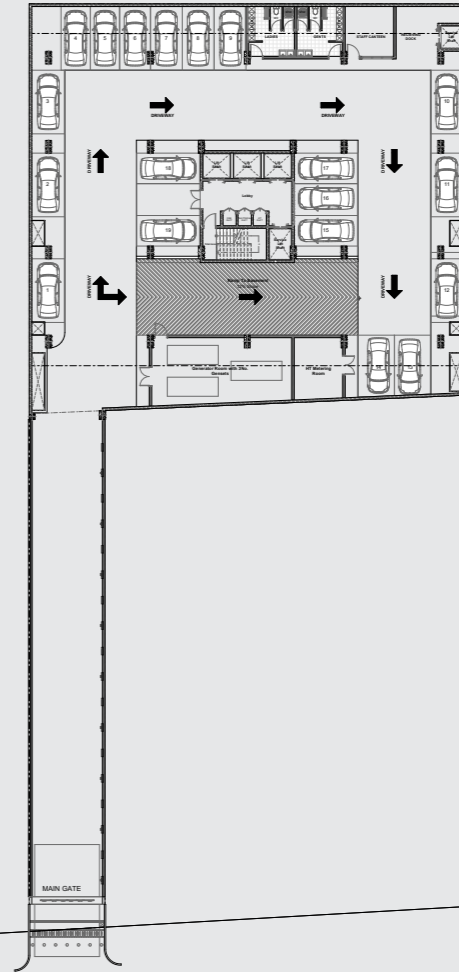
# Basement Floor Plan

1<sup>st</sup>, 2<sup>nd</sup>, 3<sup>rd</sup> Floor



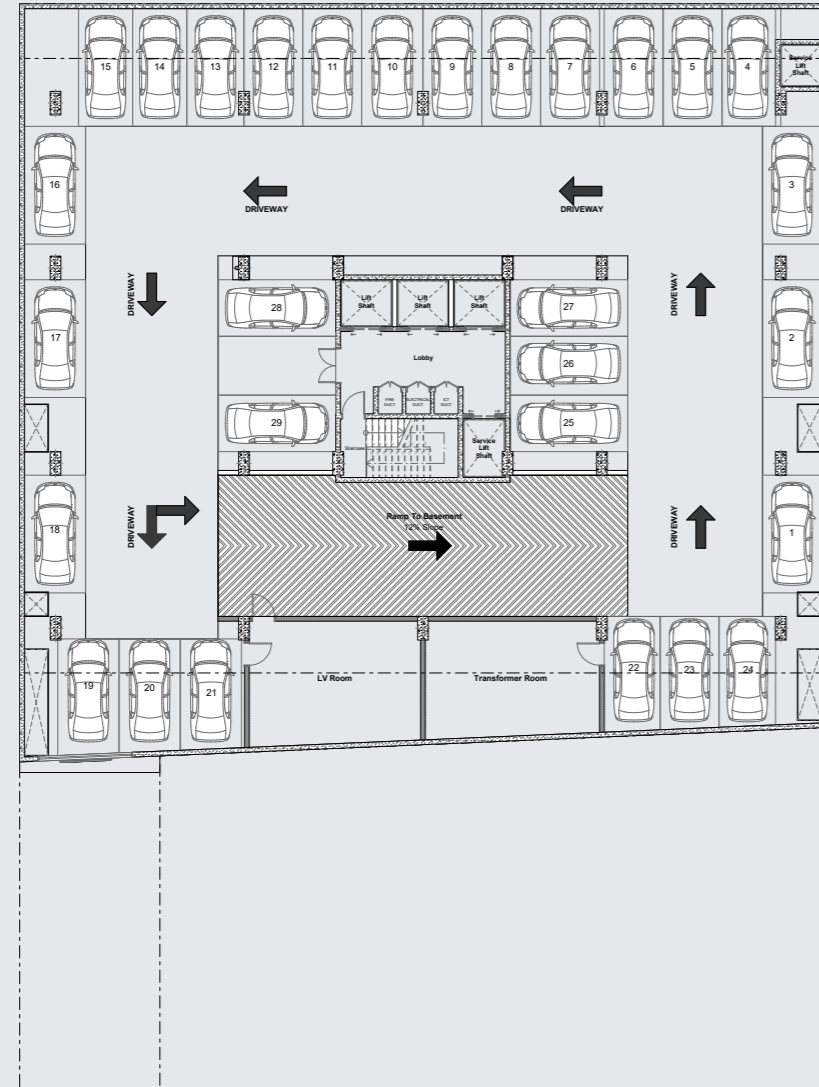
All drawings and dimensions are approximate. Drawings are not to scale and are subject to change without notice. The developer reserves the right to make revisions. The units are measured at typical floors in the building and columns may vary in size depending on the floor level. The furnishing and accessories shown are for representation only. The availability, length and width of the balcony varies depending on which floor and which orientation the unit is located within the building. There will be slight differences in the internal areas between the same unit types depending on the shaft sizes that go through the units

# Ground Floor Plan

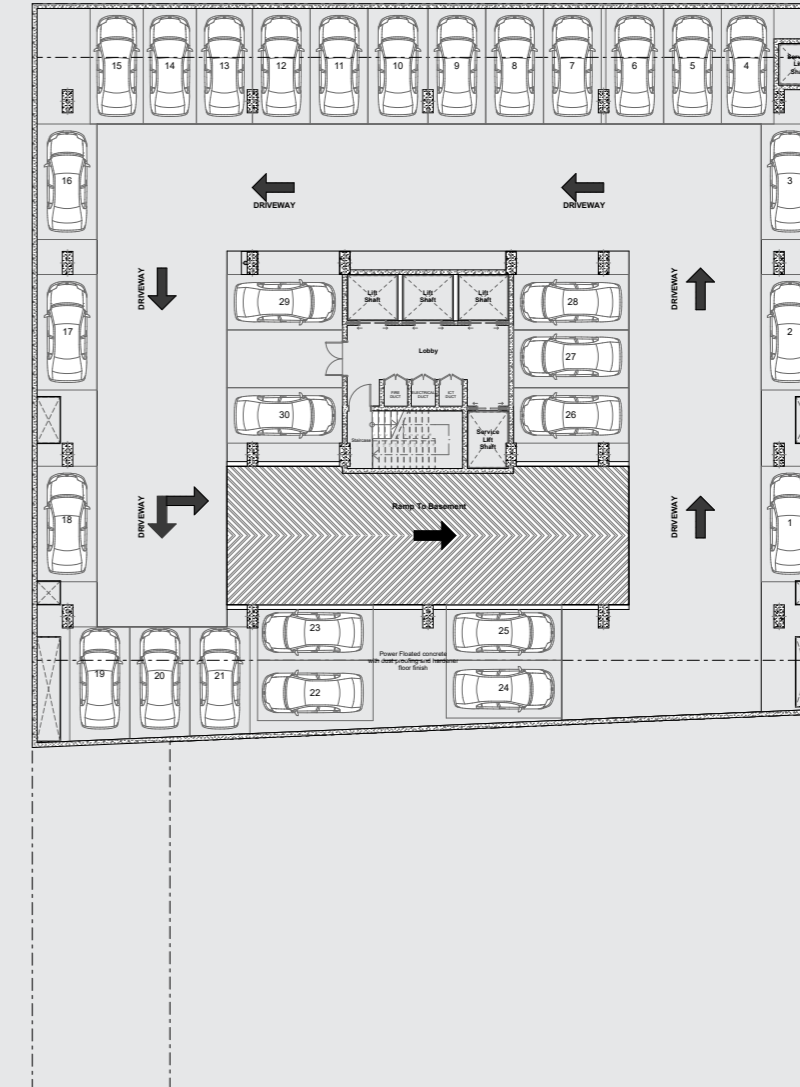


All drawings and dimensions are approximate. Drawings are not to scale and are subject to change without notice. The developer reserves the right to make revisions. The units are measured at typical floors in the building and columns may vary in size depending on the floor level. The furnishing and accessories shown are for representation only. The availability, length and width of the balcony varies depending on which floor and which orientation the unit is located within the building. There will be slight differences in the internal areas between the same unit types depending on the shaft sizes that go through the units

# 1<sup>st</sup> Floor Plan



# 2<sup>nd</sup> Floor Plan

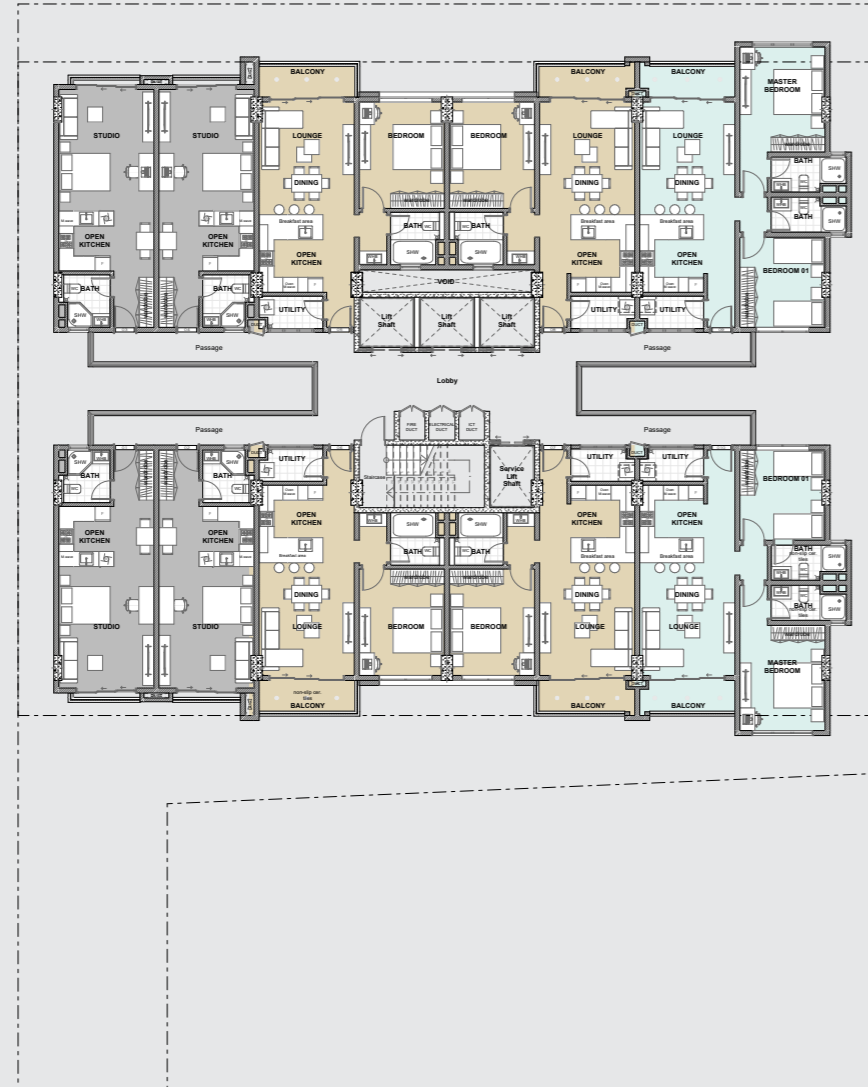


All drawings and dimensions are approximate. Drawings are not to scale and are subject to change without notice. The developer reserves the right to make revisions. The units are measured at typical floors in the building and columns may vary in size depending on the floor level. The furnishing and accessories shown are for representation only. The availability, length and width of the balcony varies depending on which floor and which orientation the unit is located within the building. There will be slight differences in the internal areas between the same unit types depending on the shaft sizes that go through the units

All drawings and dimensions are approximate. Drawings are not to scale and are subject to change without notice. The developer reserves the right to make revisions. The units are measured at typical floors in the building and columns may vary in size depending on the floor level. The furnishing and accessories shown are for representation only. The availability, length and width of the balcony varies depending on which floor and which orientation the unit is located within the building. There will be slight differences in the internal areas between the same unit types depending on the shaft sizes that go through the units



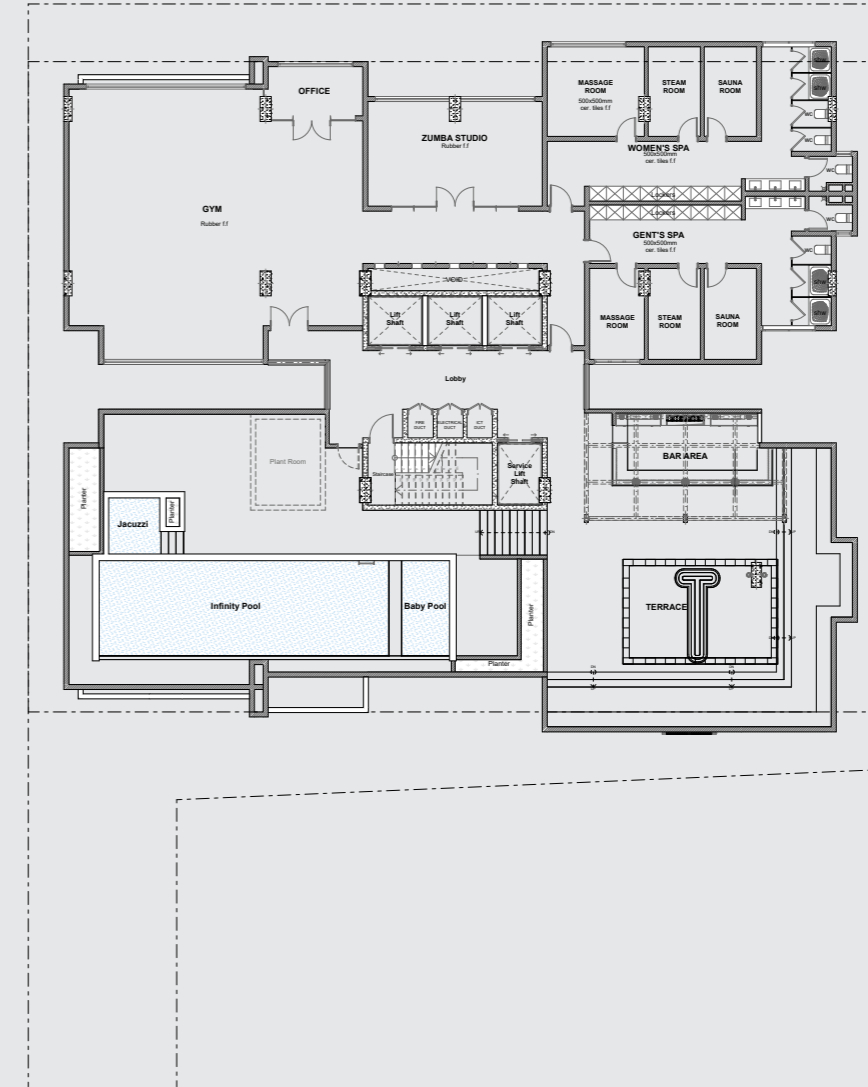
# 5<sup>th</sup> - 24<sup>th</sup> Floor Plan



- STUDIO
- 1B
- 2B

All drawings and dimensions are approximate. Drawings are not to scale and are subject to change without notice. The developer reserves the right to make revisions. The units are measured at typical floors in the building and columns may vary in size depending on the floor level. The furnishing and accessories shown are for representation only. The availability, length and width of the balcony varies depending on which floor and which orientation the unit is located within the building. There will be slight differences in the internal areas between the same unit types depending on the shaft sizes that go through the units

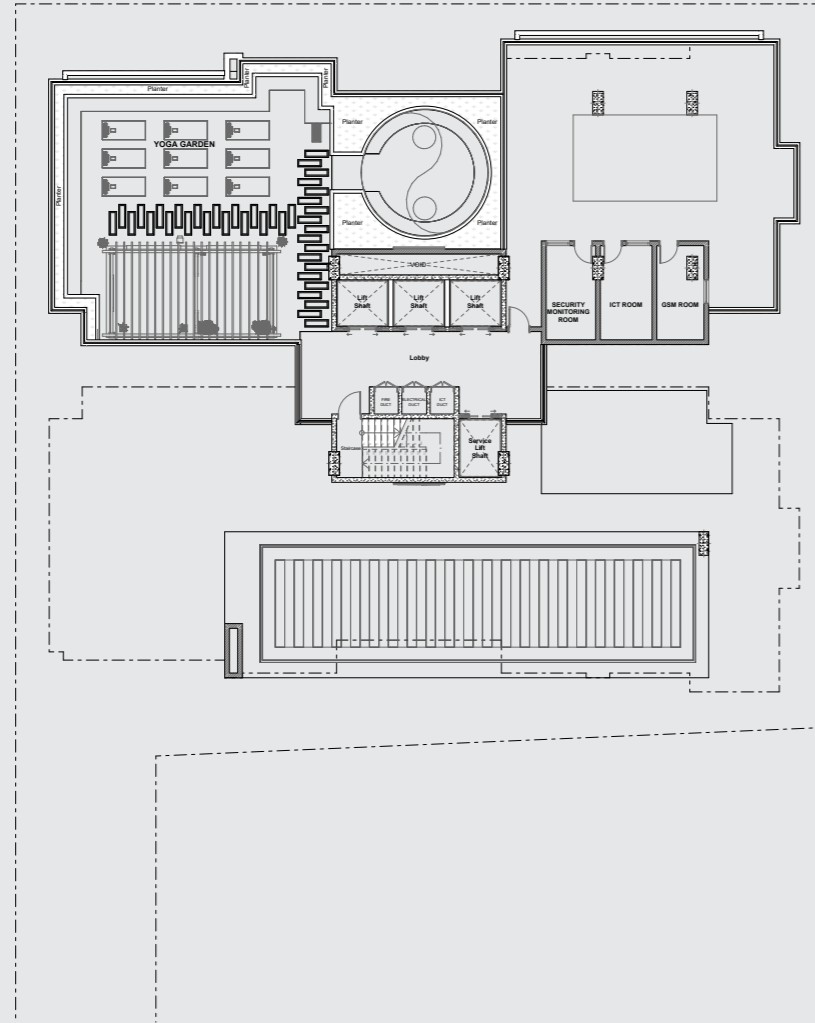
# 25<sup>th</sup> Floor Plan



All drawings and dimensions are approximate. Drawings are not to scale and are subject to change without notice. The developer reserves the right to make revisions. The units are measured at typical floors in the building and columns may vary in size depending on the floor level. The furnishing and accessories shown are for representation only. The availability, length and width of the balcony varies depending on which floor and which orientation the unit is located within the building. There will be slight differences in the internal areas between the same unit types depending on the shaft sizes that go through the units

# 26<sup>th</sup> Floor Plan

---



All drawings and dimensions are approximate. Drawings are not to scale and are subject to change without notice. The developer reserves the right to make revisions. The units are measured at typical floors in the building and columns may vary in size depending on the floor level. The furnishing and accessories shown are for representation only. The availability, length and width of the balcony varies depending on which floor and which orientation the unit is located within the building. There will be slight differences in the internal areas between the same unit types depending on the shaft sizes that go through the units

# Reportage.

## Abu Dhabi-UAE | Head Office

Tamouh Tower  
28<sup>th</sup> Floor, Al Reem Island  
P.O. Box: 111949  
Tollfree: +971 800 77 55 2  
info@reportageuae.com

## Dubai-UAE

Anantara Business Tower  
3<sup>rd</sup> Floor, Business Bay  
P.O. Box: 27446  
Tollfree: +971 800 77 55 2  
info@reportageuae.com

## Cairo-Egypt

Building 217  
North Teseen St.  
New Cairo  
T: +20 12 0008 1190  
info@reportageeg.com

## Istanbul-Türkiye

Maslak Mh. Sümer Sk.  
No:4, İç Kapı No:3, Bodrum Kat,  
Maslak Office Building ( MOB) Sarıyer  
T: +90 530 774 9595  
info@reportage.com.tr

## Riyadh-KSA

Building No. 3230  
Al Aflaj St., Al Suwaidi  
P.O. Box 12791  
T: +966 11 215 1110  
info@reportageuae.com

## Moscow-Russia

Yefremova Street 10s1, k4/4  
bld sadovye kvartaly  
P.O. Box 119048  
info@reportagerussia.com

## Kampala, Uganda

Plot 4, Philip Road  
Near German Embassy  
Kololo, Kampala, Uganda  
+256 756 111 434 | +256 763 331 572  
info@reportageug.com

## Lahore - Pakistan

Plaza No. 185, Broadway  
Commercial phase 8, DHA Lahore  
+923309991111  
Info@reportageempire.com

## Kigali, Rwanda

KG 334 ST 10, Nyarutarama,  
Kigali, Rwanda  
+250738532168 | +250794100607  
info@reportagerw.com

## Nairobi, Kenya

46 Kabasiran, Lavington  
P.O. box 38802-00623  
Tel. +254 754 108108 / +254 208 108108

## Lagos, Nigeria

No. 2 Obudu Close, Osborne Foreshore  
Estate, Phase 1, Ikoyi, Lagos Nigeria  
+234 810 859 9924  
Info@reportage.ng

DG  
WEST

---

For more information, visit [reportageuae.com](http://reportageuae.com)  
or call **800 77 55 2 | +971 50 244 1078**

---



### Legal Disclaimer:

The information contained in this brochure is confidential and is for the exclusive use of the recipient. This brochure may not be reproduced, distributed, delivered, or furnished to any person without the prior written approval of Reportage Properties. No representation or warranty (expressed or implied) is made or can be given with respect to the accuracy or completeness of the information herein, or that any future offer of units or apartments in the project will conform to the terms described herein. Nothing in this leaflet should be constructed as financial, legal, tax or regulatory advice. All accessories such as electronics, furniture, white goods, decorative elements and so forth included in this brochure are not part of the standard unit and used for illustration purposes only. All plans, layouts, pictures, renderings, information and details included in this brochure are indicative only and may change at any time up to the final 'as built' status in accordance with final designs of the project and regulatory approvals and planning permissions.



**Reportage.**  
Africa

