



DIVYABHAV
7 HILLS KOLOLO



Reportage.

ABOUT REPORTAGE

Reportage Group is one of the largest private international developers with projects in the Middle East and Europe. We are focused and consistent in our objective to provide innovative, modern, and affordable housing solutions that not only offer our investors an outstanding value but also provide home buyers a safe place to live in. Our mission is to be amongst the most trusted real estate companies globally by developing and providing homes that are equally elegant and affordable and provide you with a sense of belonging. We look forward to the upcoming years, and aspire to expand our real estate business globally.

**Building
Legacies
Since 2014**





UGANDA THE PEARL OF AFRICA

Nestled in the heart of East Africa, Uganda is a land of breathtaking landscapes, rich culture, and vibrant urban growth. Known as the 'Pearl of Africa,' the country boasts lush greenery, stunning lakes, and a dynamic capital city—Kampala. As Uganda's premier economic and diplomatic hub, Kampala is home to a thriving business sector, international embassies, and a cosmopolitan lifestyle, making it a prime location for luxury real estate investment.



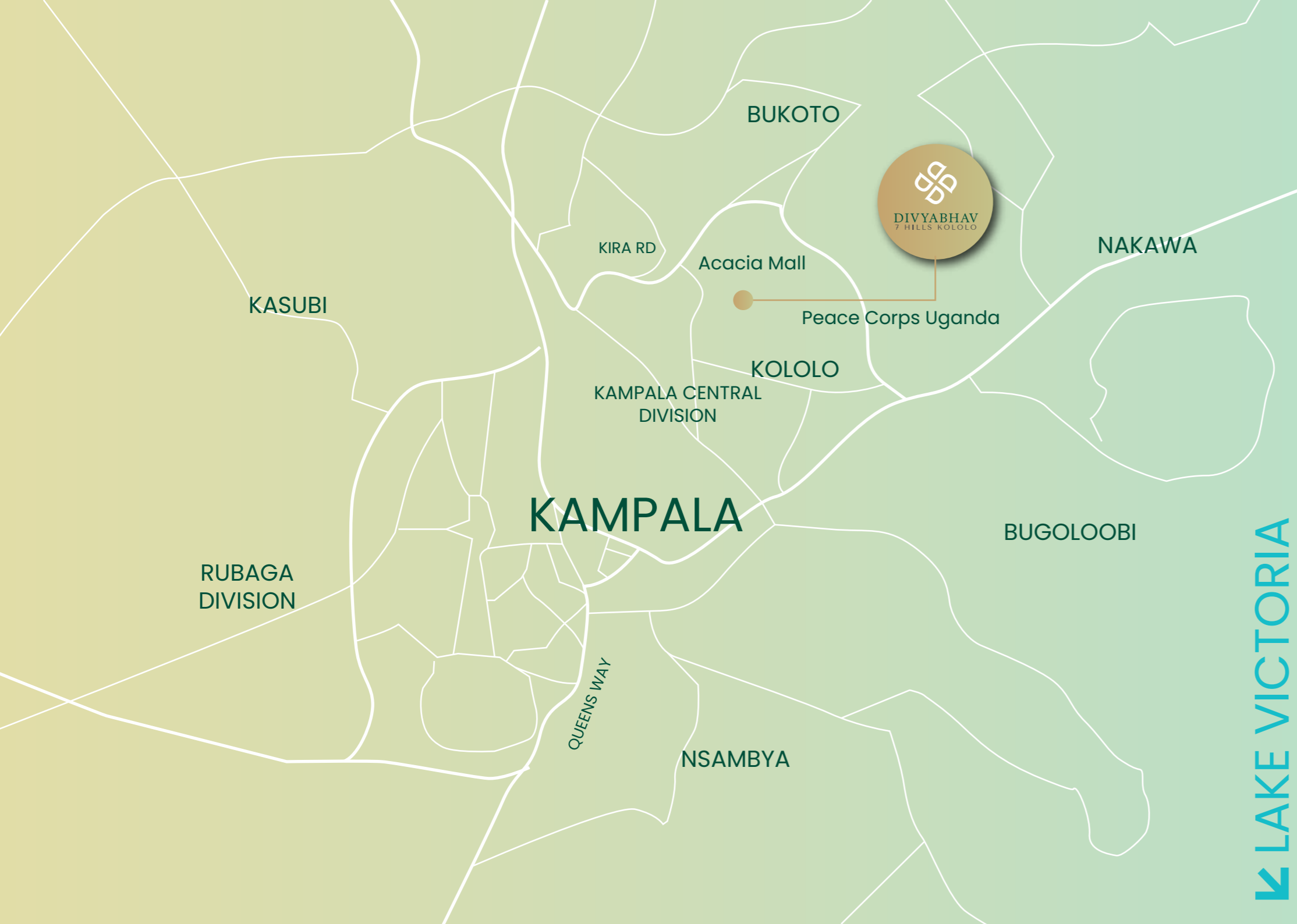
EXPERIENCE LUXURY
AMIDST NATURE



DIVYABHAV 7 HILLS KOLOLO

Set in the prestigious Embassy District of Kololo, **DIVYABHAV 7 HILLS** is an exclusive residential and commercial tower that redefines modern living in Uganda's capital. Designed to blend contemporary elegance with Kololo's lush landscape, this architectural masterpiece offers an unparalleled standard of sophistication, convenience, and security.





PRESTIGIOUS LOCATION

Perched on Kololo's elevated terrain, Divyabhav presents stunning panoramic views of Kampala's skyline and verdant surroundings. Its strategic location offers a serene retreat from the city's bustle while ensuring effortless access to key business and diplomatic hubs.

- 04 Minute walk** to Acacia Mall
- 01 Minute drive** to Peace Corps Uganda NGO
- 02 Minute drive** to the Embassy District & World Bank Uganda Office
- 05 Minute drive** to Kololo Hospital
- 52 Minute drive** to Entebbe International Airport

LAKE VICTORIA

ELEVATED LIVING SPACES

Every detail of **DIVYABHAV 7 HILLS** is designed to offer a distinguished lifestyle. With meticulously crafted interiors, modern aesthetics, and world-class amenities, residents enjoy a harmonious blend of elegance and comfort.

Total Height: 78.40m

Total Units: 166

Levels: Ground + 4 Podiums + 13 Floors

240 Private Parking Spaces

Retail & Office Spaces





EXCEPTIONAL AMENITIES



- ❖ Swimming Pool & Kids' Pool
- ❖ Fully Equipped Gymnasium & Outdoor Gym
- ❖ Multipurpose Hall & Lounge Terrace
- ❖ Kids' Play Areas
- ❖ BBQ & Shaded Seating Areas





CONTEMPORARY INTERIORS

- ❖ Private Balconies & Terraces
- ❖ Fully-tiled Bathrooms with En-suite Bedrooms
- ❖ Built-in Wardrobes & Kitchen Cabinetry
- ❖ Double-Glazed Windows
- ❖ High-Speed Internet Connectivity





UNIT MIX

Studio: 17 Apartments

One-Bedroom: 56 Apartments

Two-Bedroom: 46 Apartments

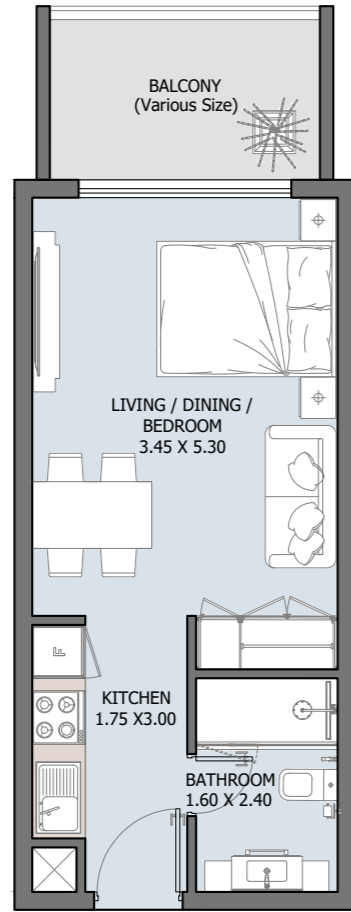
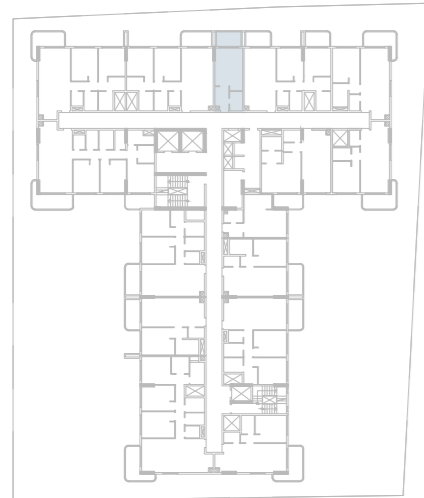
Three-Bedroom: 19 Apartments

Three-Bedroom Duplex: 4 Apartments

Four-Bedroom Duplex: 24 Apartments

ST | Type A

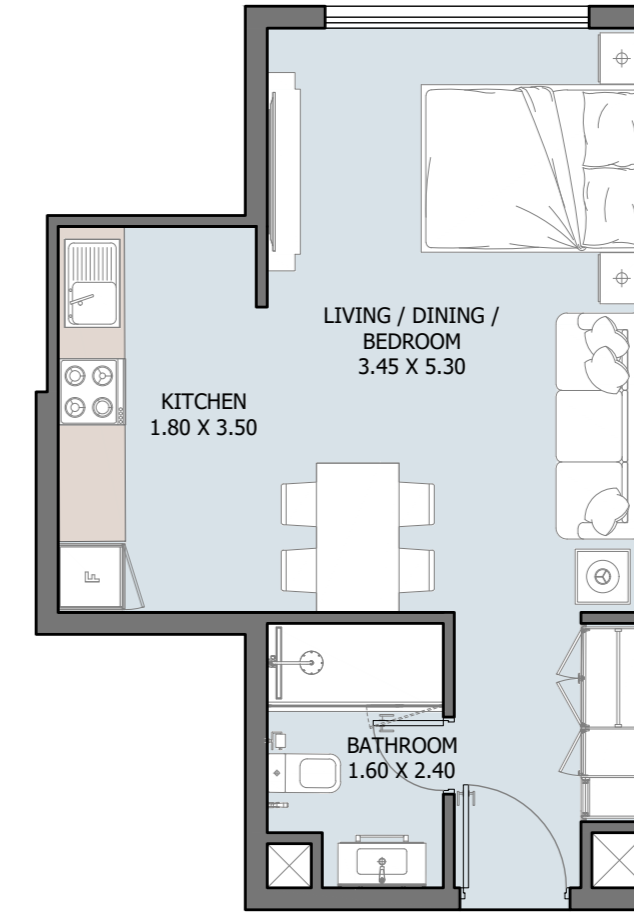
From 6th to 13th Floor



| | |
|---------------|--------------|
| Internal Area | 319.47 sq.ft |
| Outdoor Area | 68.46 sq.ft |
| Total Area | 387.93 sq.ft |

ST | Type B

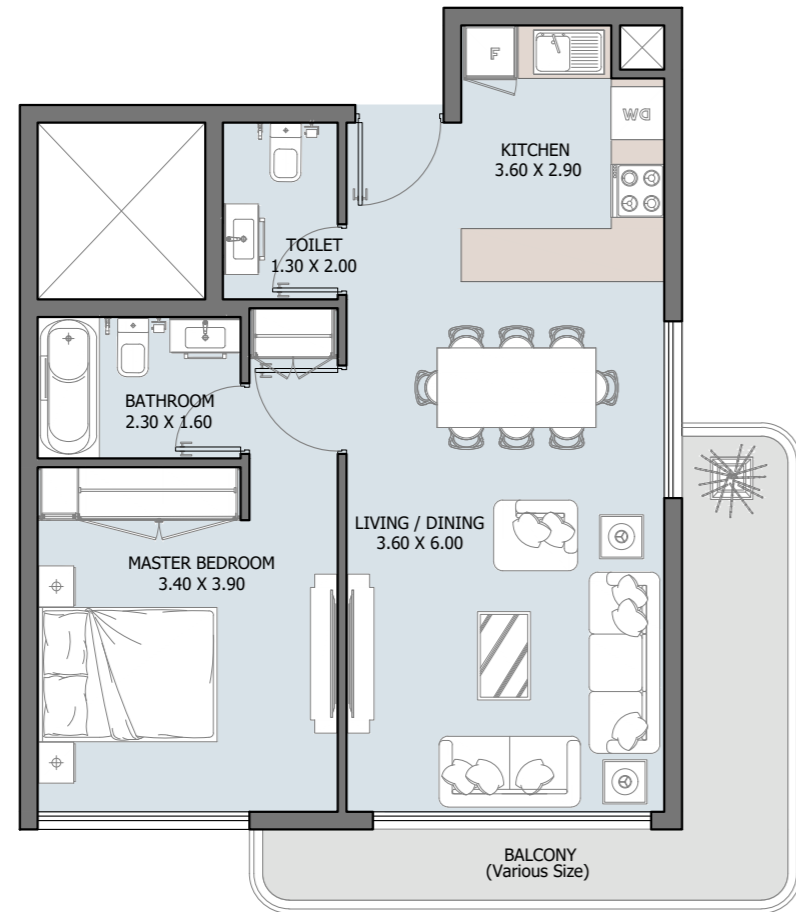
From 5th to 13th Floor



| | |
|---------------|--------------|
| Internal Area | 402.46 sq.ft |
| Outdoor Area | 0.0 sq.ft |
| Total Area | 402.46 sq.ft |

1B | Type A

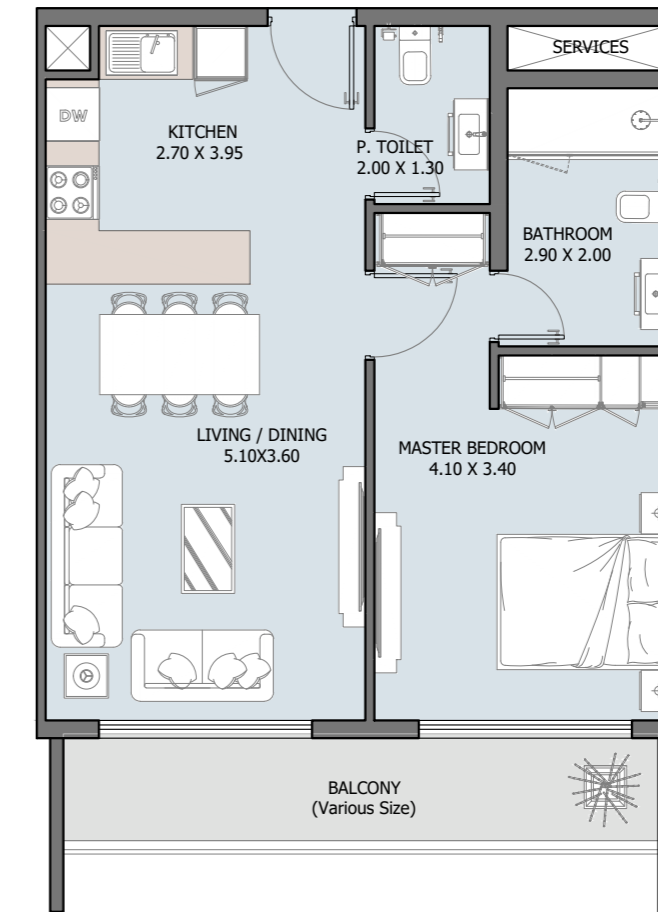
From 3rd to 13th Floor



| | |
|---------------|------------------------|
| Internal Area | 638.51 to 671.45 sq.ft |
| Outdoor Area | 98.27 to 230.46 sq.ft |
| Total Area | 739.91 to 877.90 sq.ft |

1B | Type B

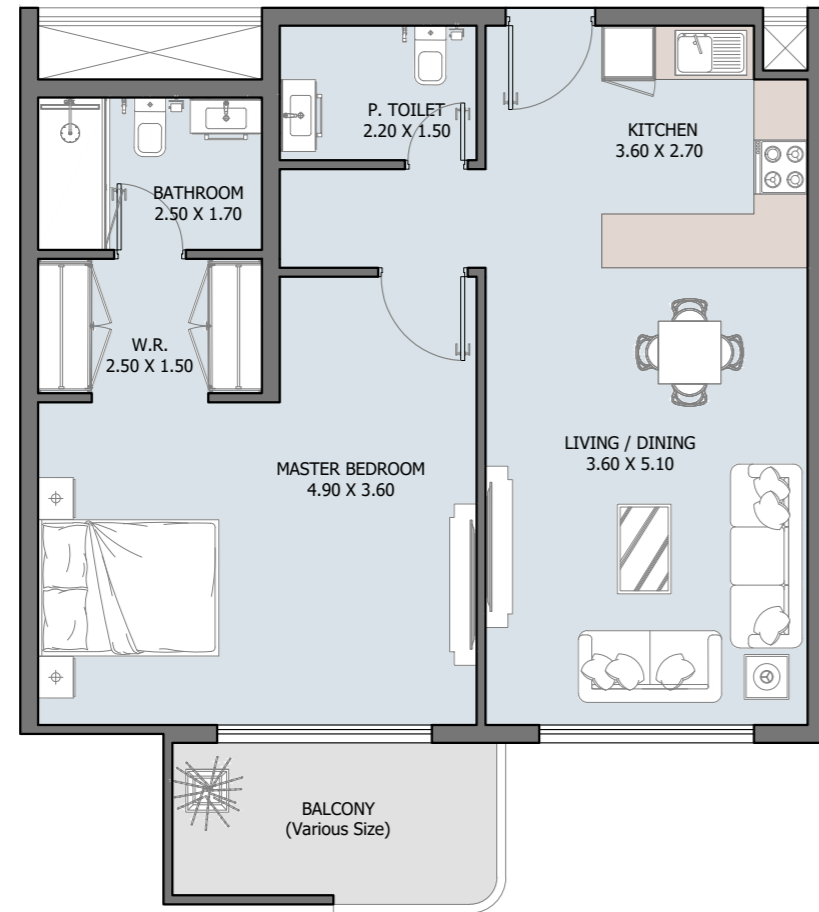
From 4th to 13th Floor



| | |
|---------------|------------------------|
| Internal Area | 631.41 to 640.24 sq.ft |
| Outdoor Area | 81.38 to 151.23 sq.ft |
| Total Area | 712.79 to 791.47 sq.ft |

1B | Type C

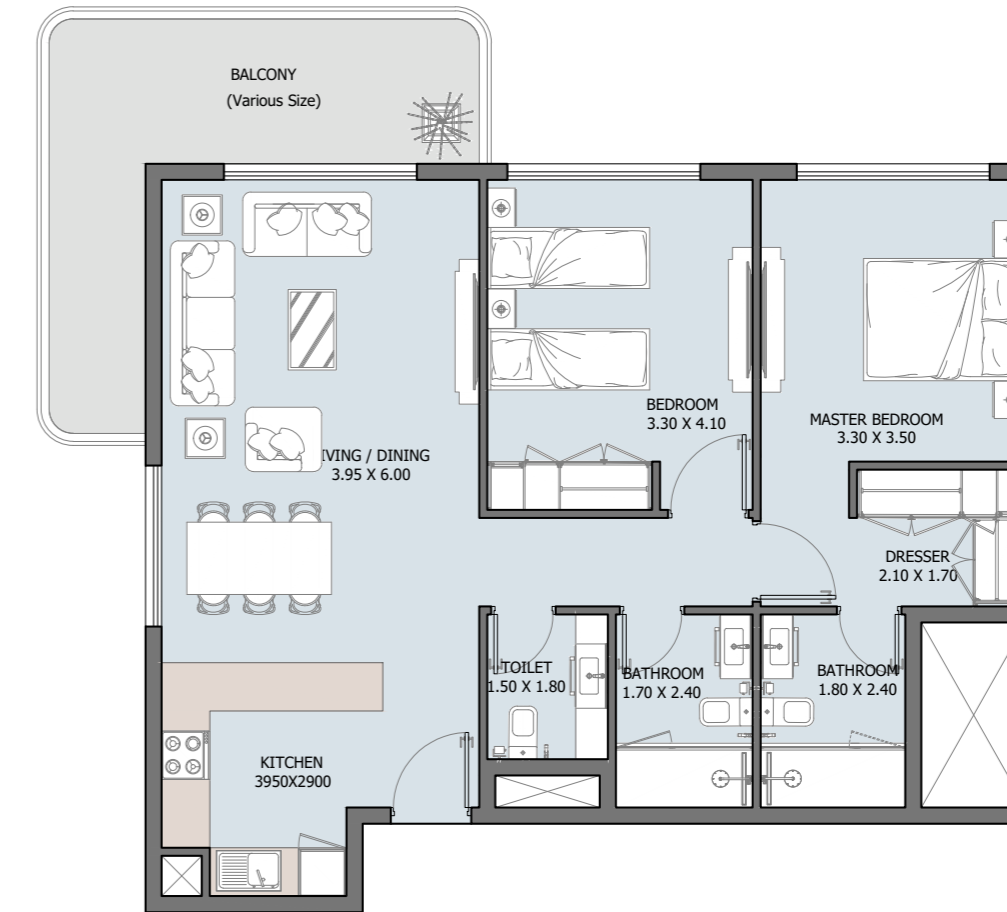
From 5th to 13th Floor



| | |
|---------------|------------------------|
| Internal Area | 764.99 sq.ft |
| Outdoor Area | 73.73 to 145.21 sq.ft |
| Total Area | 838.72 to 910.20 sq.ft |

2B | Type A

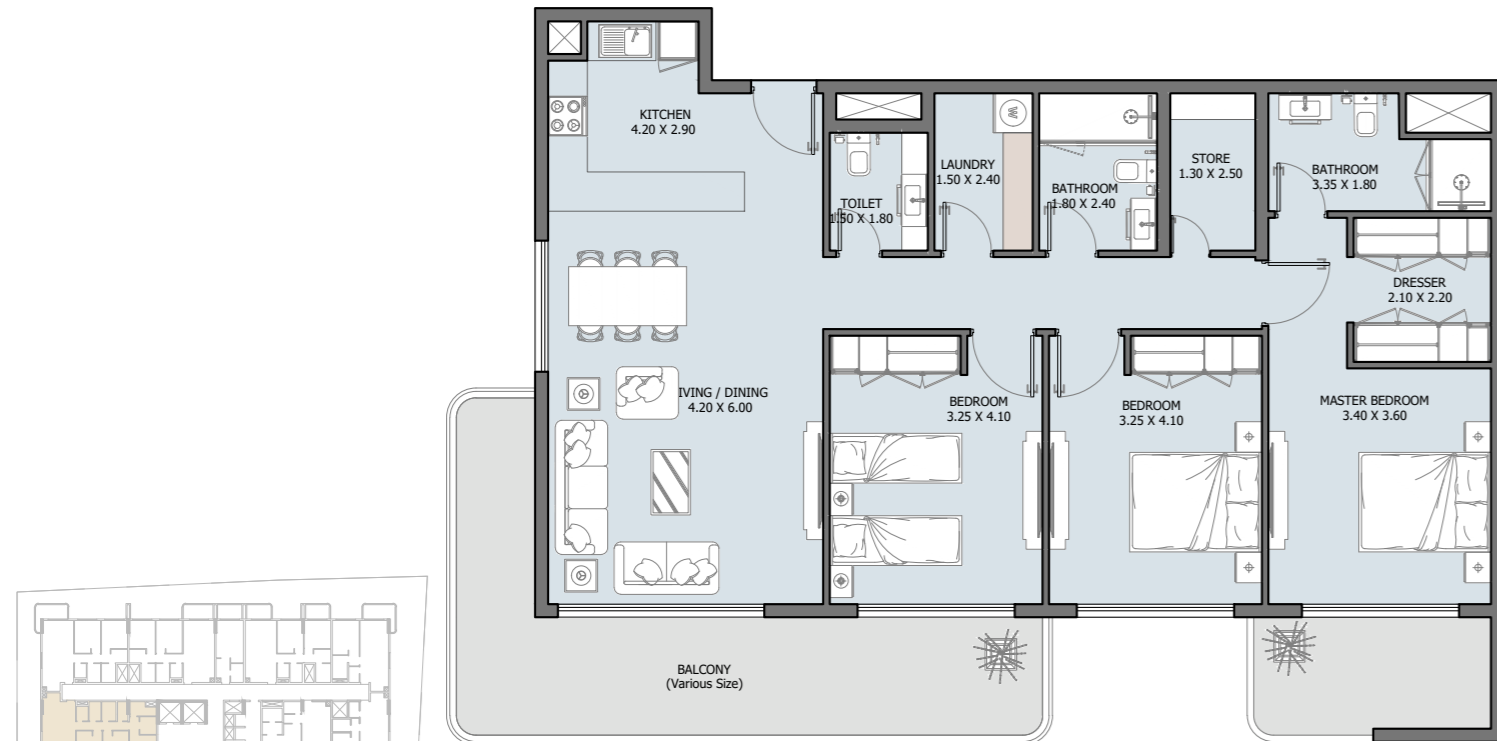
From 3rd to 13th Floor



| | |
|---------------|--------------------------|
| Internal Area | 926.02 to 973.92 sq.ft |
| Outdoor Area | 80.41 to 305.16 sq.ft |
| Total Area | 1007.39 to 1279.07 sq.ft |

3B | Type A

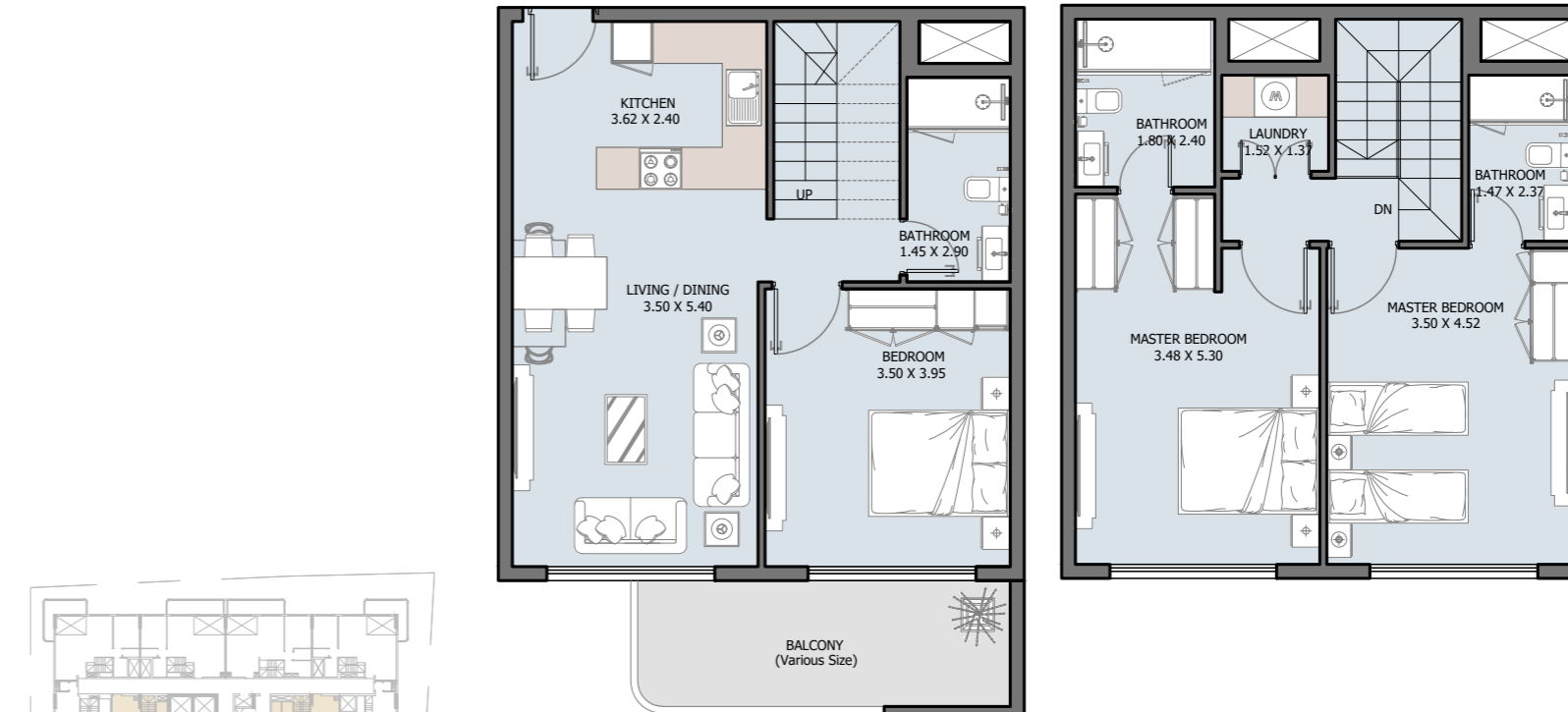
From 4th to 13th Floor



| | |
|---------------|--------------------------|
| Internal Area | 1277.57 to 1318.69 sq.ft |
| Outdoor Area | 108.72 to 306.23 sq.ft |
| Total Area | 1386.28 to 1624.92 sq.ft |

3B DUPLEX | Type B

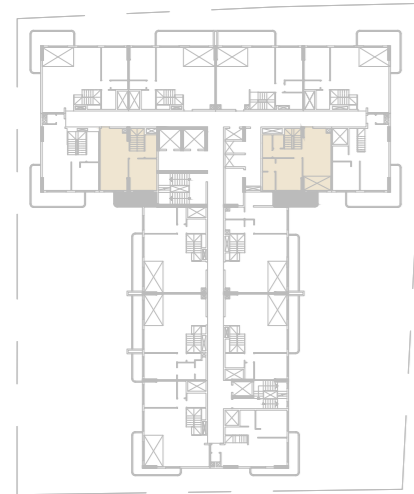
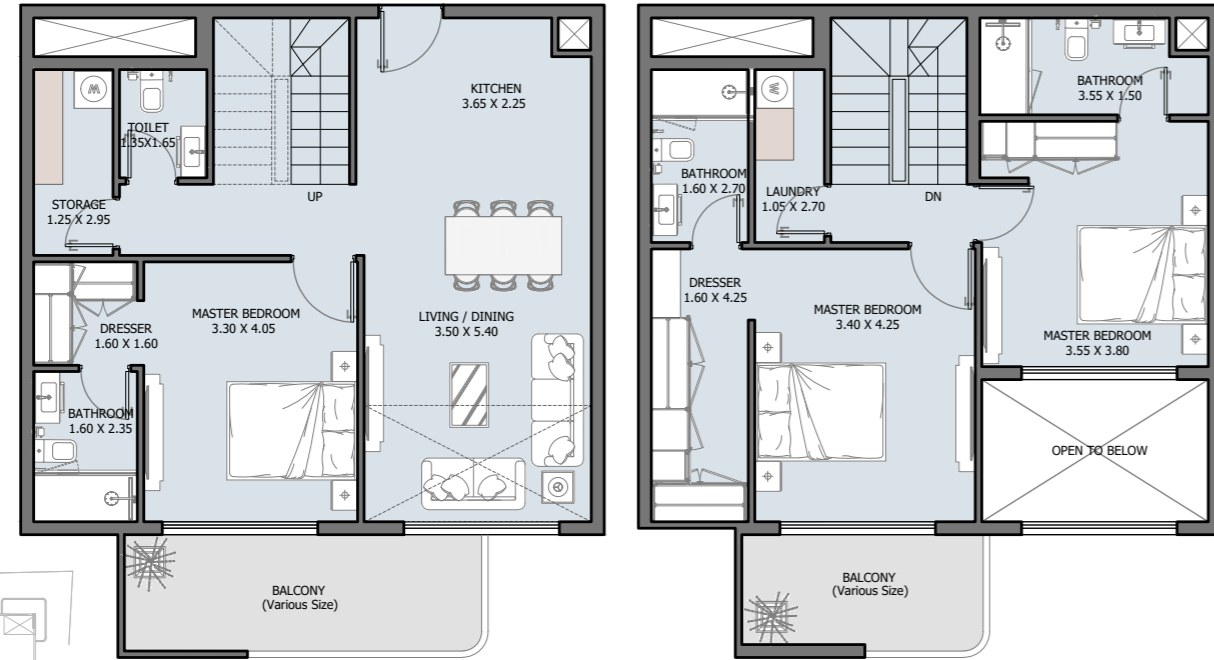
From 14th to 16th Floor



| | |
|---------------|---------------|
| Internal Area | 1278.32 sq.ft |
| Outdoor Area | 108.28 sq.ft |
| Total Area | 1386.61 sq.ft |

3B DUPLEX | Type C

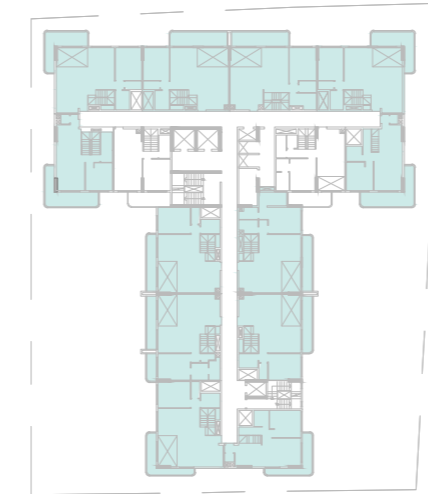
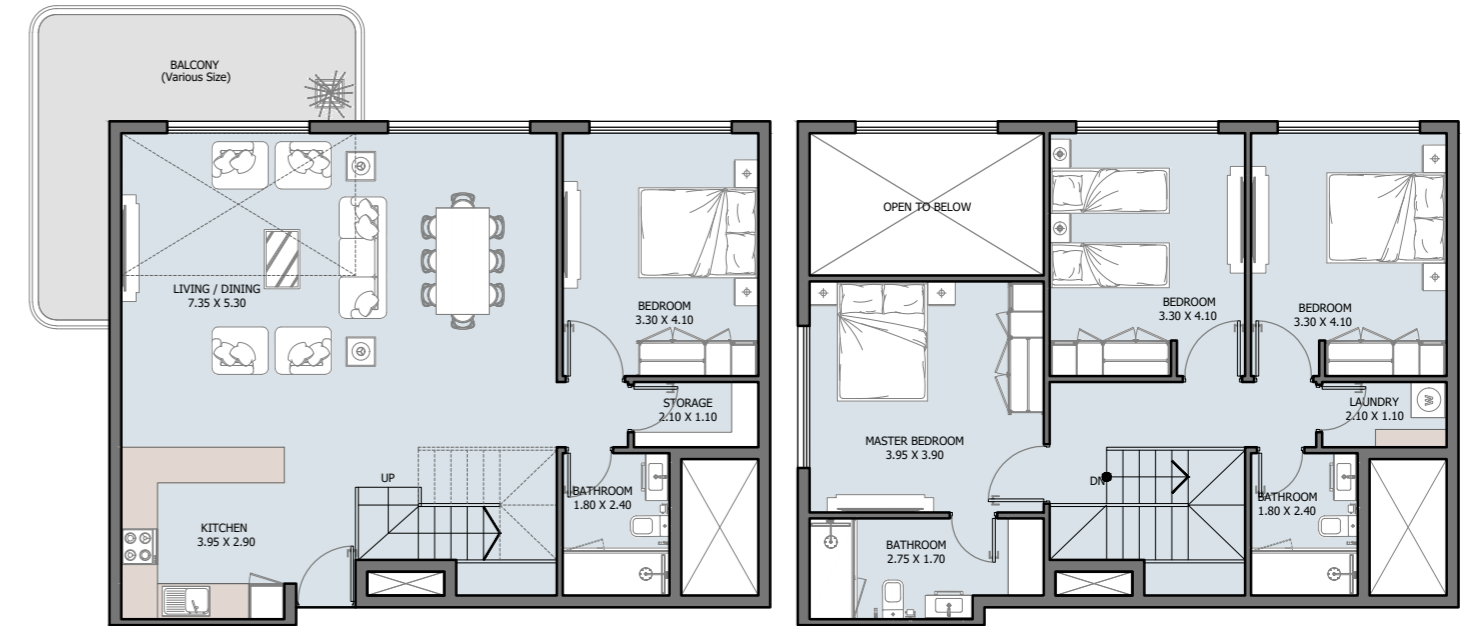
From 14th to 16th Floor



| | |
|---------------|---------------|
| Internal Area | 1530.84 sq.ft |
| Outdoor Area | 184.17 sq.ft |
| Total Area | 1715.01 sq.ft |

4B DUPLEX | Type A

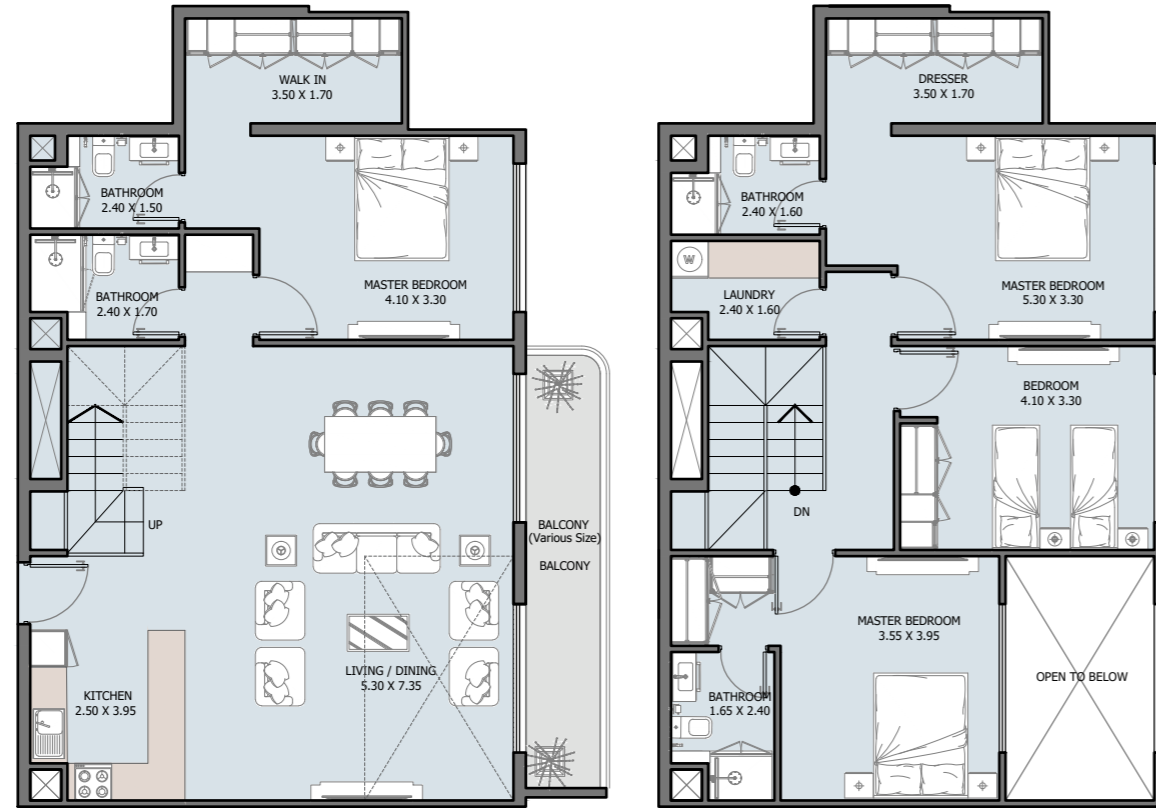
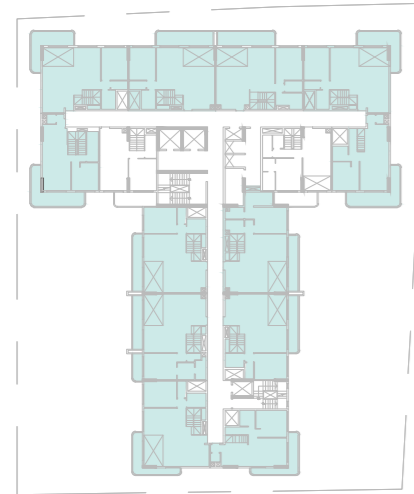
From 14th to 16th Floor



| | |
|---------------|--------------------------|
| Internal Area | 1846.55 to 1923.29 sq.ft |
| Outdoor Area | 103.12 to 226.69 sq.ft |
| Total Area | 1955.05 to 2122 sq.ft |

4B DUPLEX | Type B

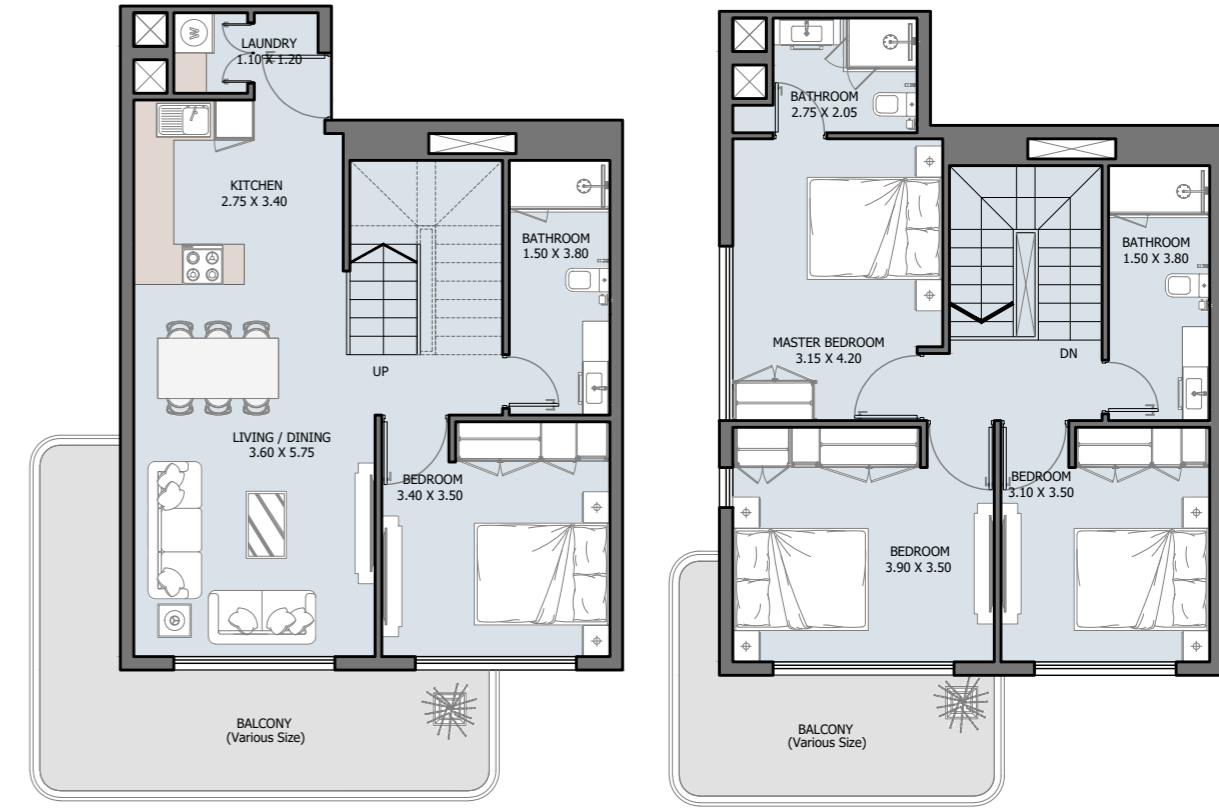
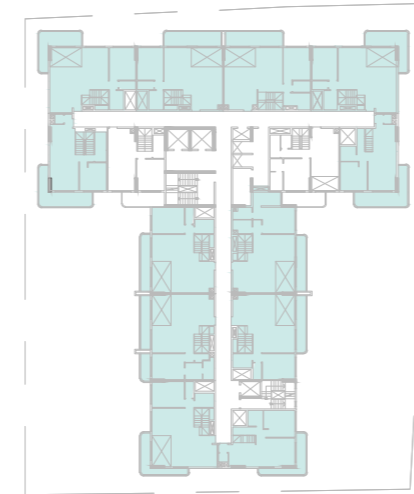
From 14th to 16th Floor



| | |
|---------------|---------------|
| Internal Area | 2067.85 sq.ft |
| Outdoor Area | 101.07 sq.ft |
| Total Area | 2168.93 sq.ft |

4B DUPLEX | Type C

From 14th to 16th Floor



| | |
|---------------|--------------------------|
| Internal Area | 1327.19 to 1367.98 sq.ft |
| Outdoor Area | 230.89 to 300.85 sq.ft |
| Total Area | 1590.80 to 1668.84 sq.ft |

A NEW BENCHMARK FOR URBAN LUXURY

From its striking façade to its thoughtfully designed living spaces, **Divaybhav 7 Hills** sets a new standard for contemporary residences in Kampala. A seamless fusion of modern design and natural beauty, this exclusive development offers an unmatched lifestyle in Uganda's most prestigious neighborhood.



Reportage.

Abu Dhabi-UAE | Head Office

Tamouh Tower
28th Floor, Al Reem Island
P.O. Box: 111949
Tollfree: +971 800 77 55 2
info@reportageuae.com

Dubai-UAE

Anantara Business Tower
3rd Floor, Business Bay
P.O. Box: 27446
Tollfree: +971 800 77 55 2
info@reportageuae.com

Cairo-Egypt

Building 217
North Teseen St.
New Cairo
T: +20 12 0008 1190
info@reportageeg.com

Istanbul-Türkiye

Maslak Mh. Sümer Sk.
No:4, İç Kapı No:3, Bodrum Kat,
Maslak Office Building (MOB) Sanyer
T: +90 530 774 9595
info@reportage.com.tr

Riyadh-KSA

Building No. 3230
Al Aflaj St., Al Suwaidi
P.O. Box 12791
T: +966 11 215 1110
info@reportageuae.com

Moscow-Russia

Yefremova Street 10s1, k4/4
bld sadovye kvartaly
P.O. Box 119048
info@reportagerussia.com

Kampala, Uganda

Plot 4, Philip Road
Near German Embassy
Kololo, Kampala, Uganda
+256 756 111 434 | +256 763 331 572
info@reportageug.com

Lahore - Pakistan

Plaza No. 185, Broadway
Commercial phase 8, DHA Lahore
+92 42 111 999 911
Info@reportageempire.com

ISLAMABAD Pakistan

Building No. 14, Sector-F,
Near Giga Mall, Phase 2,
DHA, Islamabad.
+92 42 111 999 911
Info@reportageempire.com

Kigali, Rwanda

KG 334 ST 10, Nyarutarama,
Kigali, Rwanda
+250738532168 | +250794100607
info@reportagerw.com

For more information, visit reportageuae.com
or call 800 77 55 2 | +971 50 244 1078



Legal Disclaimer:

The information contained in this brochure is confidential and is for the exclusive use of the recipient. This brochure may not be reproduced, distributed, delivered, or furnished to any person without the prior written approval of Reportage Properties. No representation or warranty (expressed or implied) is made or can be given with respect to the accuracy or completeness of the information herein, or that any future offer of units or apartments in the project will conform to the terms described herein. Nothing in this leaflet should be construed as financial, legal, tax or regulatory advice. All accessories such as electronics, furniture, white goods, decorative elements and so forth included in this brochure are not part of the standard unit and used for illustration purposes only. All plans, layouts, pictures, renderings, information and details included in this brochure are indicative only and may change at any time up to the final 'as built' status in accordance with final designs of the project and regulatory approvals and planning permissions.



R.