



**SILA**

MASDAR CITY

SHAPE TOMORROW





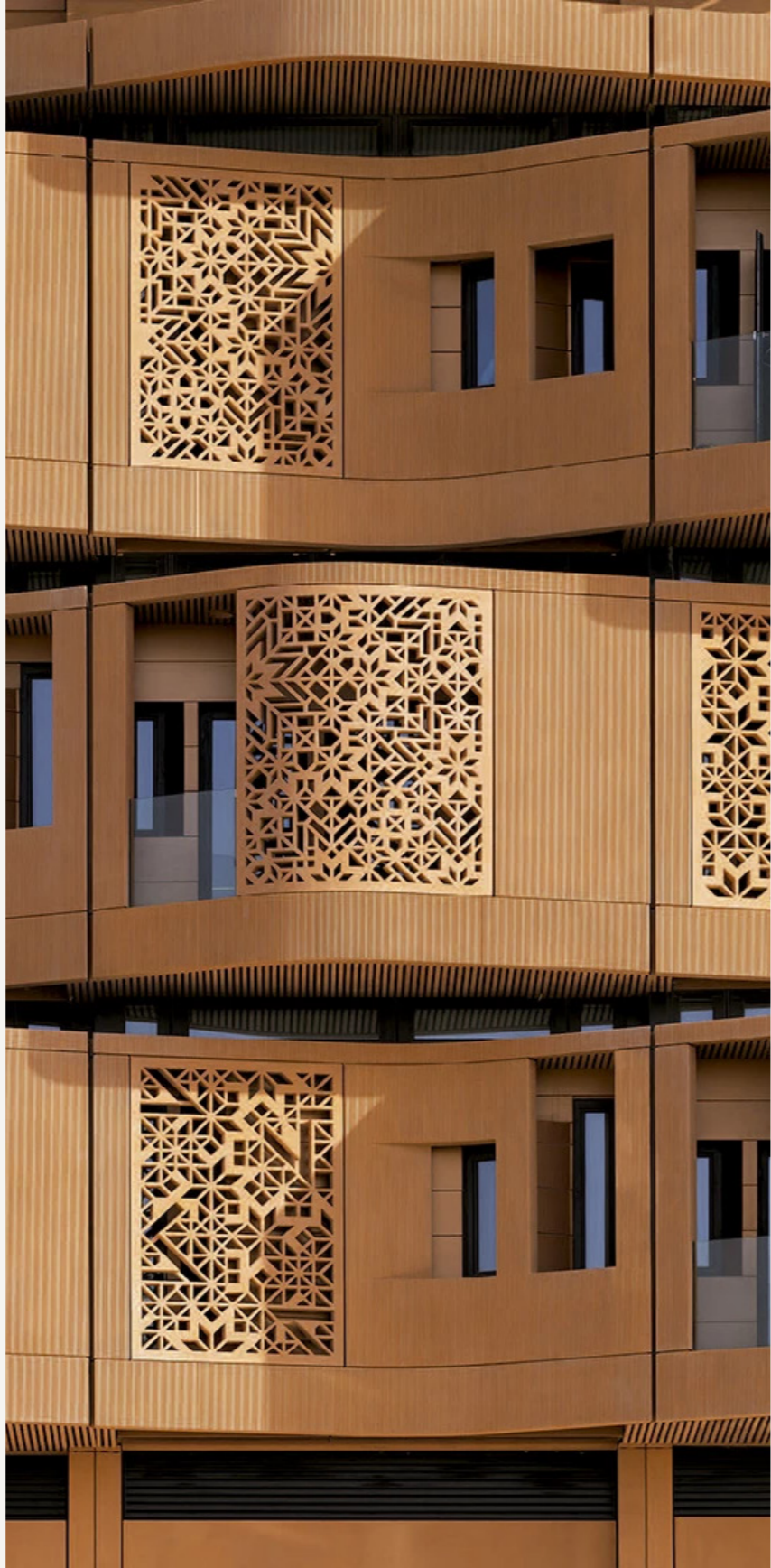
## ABU DHABI

WHERE VISION MEETS POSSIBILITY

Abu Dhabi, a city shaped by ambition and guided by purpose. Perfectly positioned between East and West, it stands as a global crossroads for ideas, innovation, growth and entertainment.

Abu Dhabi offers something deeper, a safe, vibrant, and cosmopolitan way of life, enriched by world-class education, healthcare, and culture.





# MASDAR CITY

## WHERE THE FUTURE BEGINS

You're not just investing in a place, you're stepping into a living vision. At Masdar City, in the heart of Abu Dhabi, you're surrounded by the world's best in clean tech, bold innovation, and sustainable living.

This is where global changemakers, startups, and research pioneers thrive, supported by 100% foreign ownership, free zone benefits, and a government that backs progress.

Masdar City isn't just smart. It's what the future looks like.



# WHAT IS SUSTAINABILITY?

Masdar City proves that sustainability isn't just an idea—it's already in motion. A city designed for the planet, and for people.



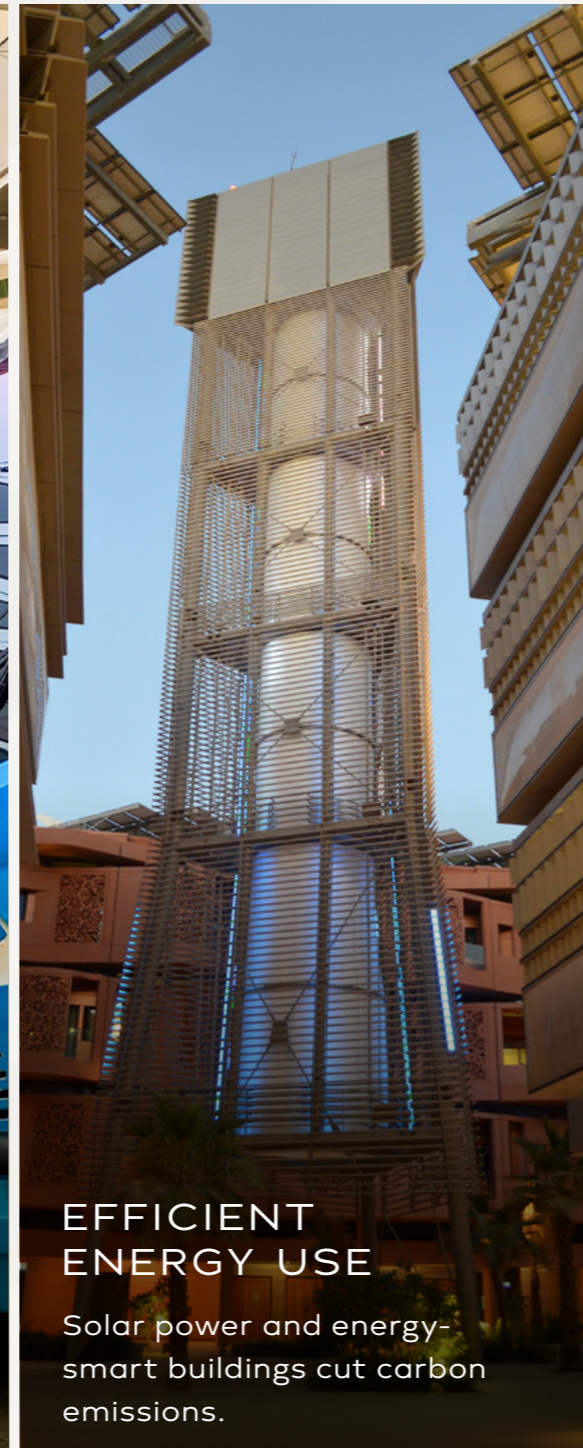
## COOLER URBAN CLIMATE

Smart design and green spaces reduce the heat island effect.



## SELF-DRIVING ELECTRIC VEHICLES

Electric transport keeps the air fresh and breathable.



## EFFICIENT ENERGY USE

Solar power and energy-smart buildings cut carbon emissions.



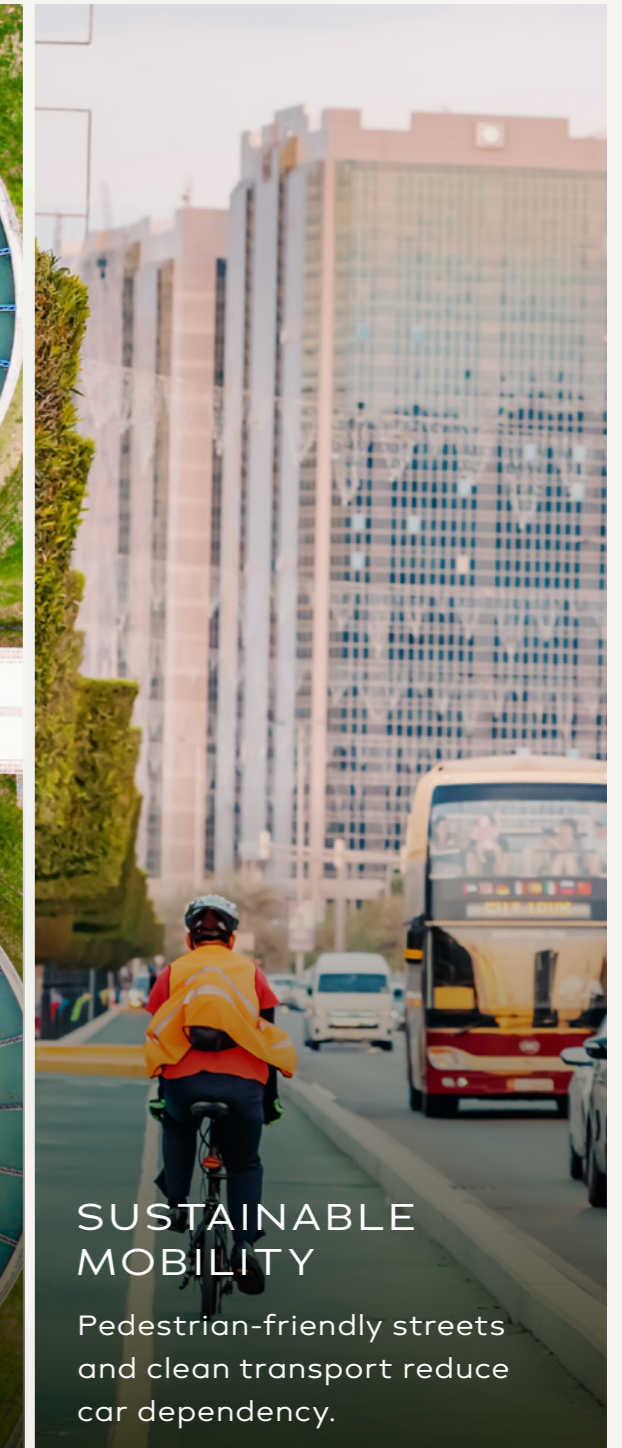
## WASTE REDUCTION

Advanced recycling and waste systems support a circular economy.



## SMART WATER USE

Efficient systems and reuse strategies conserve every last drop.



## SUSTAINABLE MOBILITY

Pedestrian-friendly streets and clean transport reduce car dependency.



# SILA

SHAPE TOMORROW

In a world racing forward,  
Sila is the place that pauses  
to listen to the wind, to honor the ground,  
to walk with purpose along the path that  
leads not just somewhere,  
but somewhen.

Sila is more than a place, it is a way.  
It is the virtue of design.

The discipline of doing better.  
The connection between home and horizon,  
community and climate, soul and soil.  
To save tomorrow is to shape the path today.

This is Sila.  
A path. A bond. A breath of the earth.  
And a vision, rooted in now,  
to save what comes next.

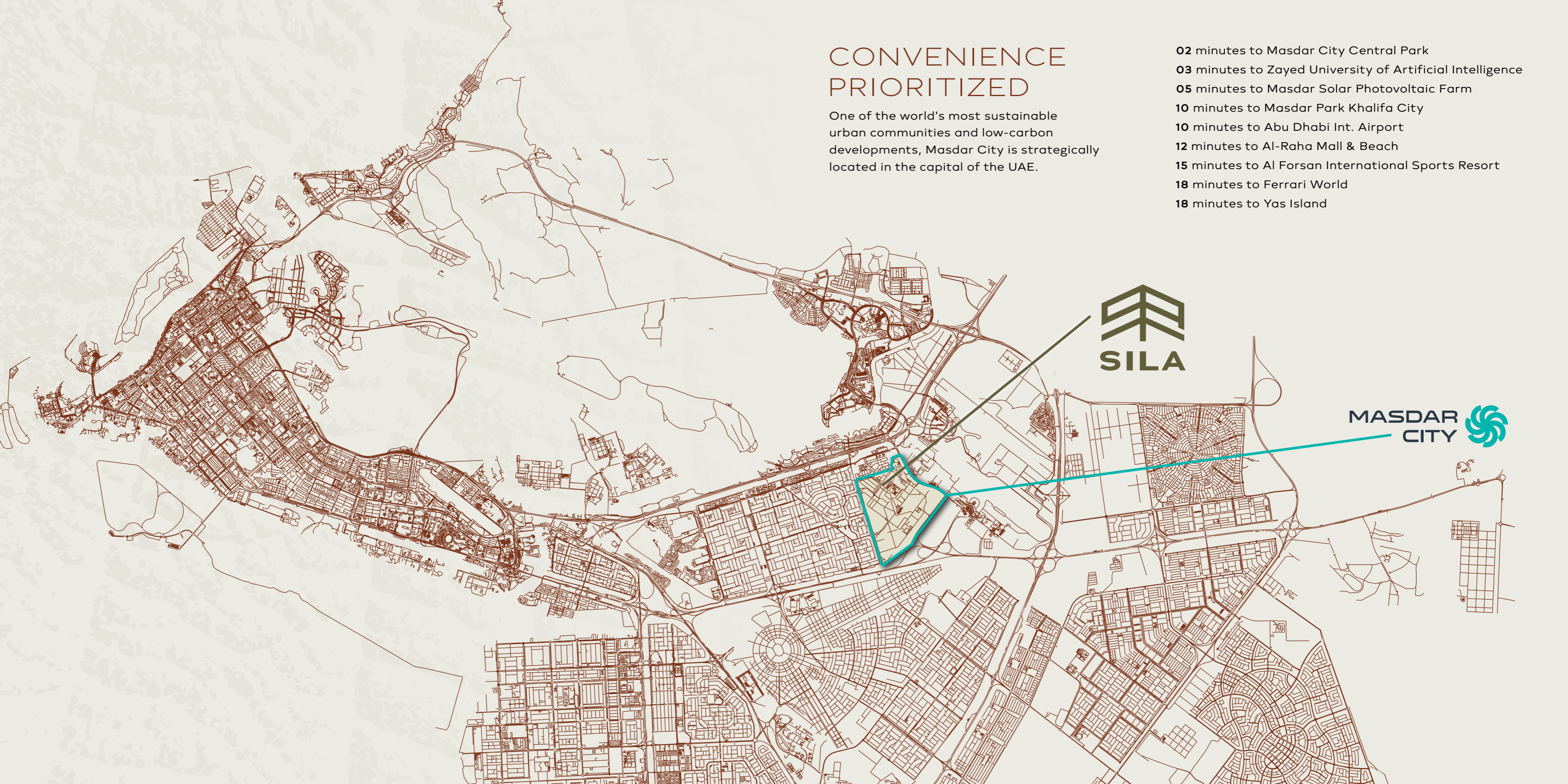




# CONVENIENCE PRIORITIZED

One of the world's most sustainable urban communities and low-carbon developments, Masdar City is strategically located in the capital of the UAE.

- 02 minutes to Masdar City Central Park
- 03 minutes to Zayed University of Artificial Intelligence
- 05 minutes to Masdar Solar Photovoltaic Farm
- 10 minutes to Masdar Park Khalifa City
- 10 minutes to Abu Dhabi Int. Airport
- 12 minutes to Al-Raha Mall & Beach
- 15 minutes to Al Forsan International Sports Resort
- 18 minutes to Ferrari World
- 18 minutes to Yas Island





Kapıdağcı

SILA



## DESIGN PHILOSOPHY

We designed with the sun, the wind, and the future in mind, but more importantly, we designed for people.

For morning hellos in shaded promenades,  
for shared gardens that grow communities,  
for quiet corners that breathe.

Sila, Shape Tomorrow.





# AMENITIES & SERVICES



PRIVATE  
PARKING



KIDS' & ADULTS  
SWIMMING POOLS



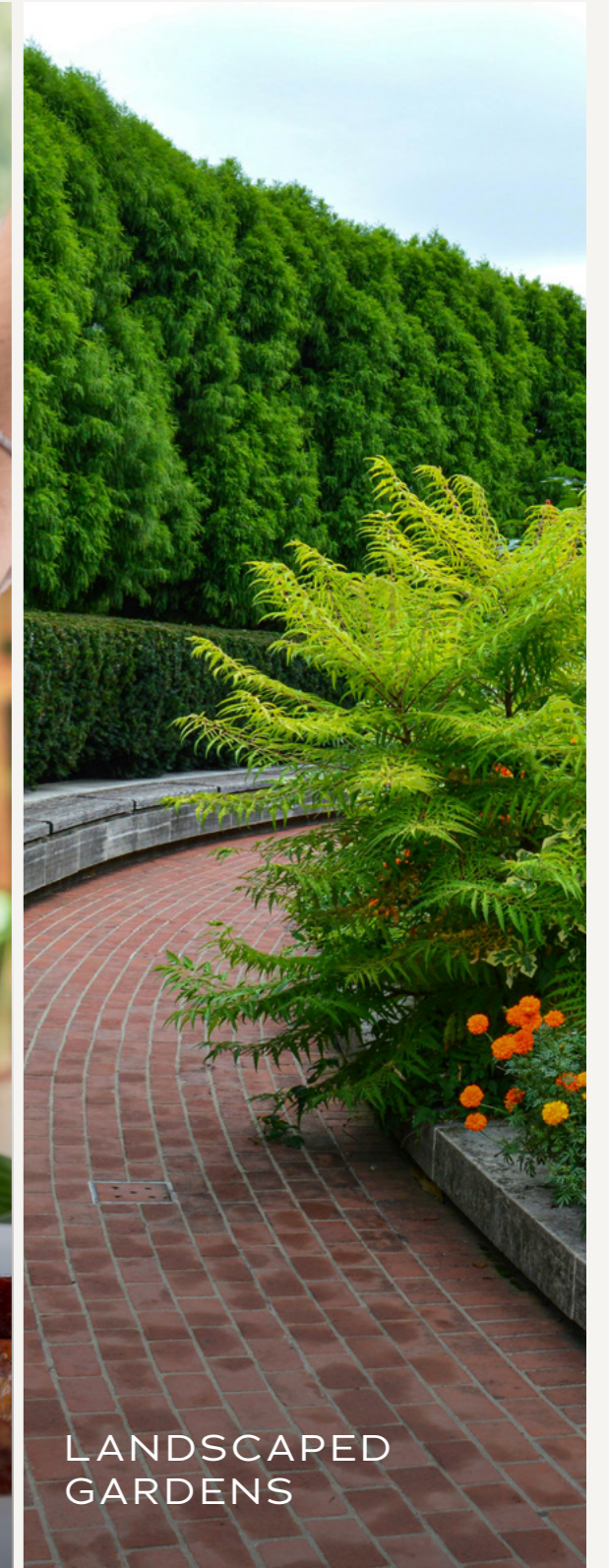
FULLY-EQUIPPED  
GYM



KIDS'  
PLAY AREA



BARBECUE  
AREA



LANDSCAPED  
GARDENS



Reportage.

SILA

YESILA



## PROJECT DETAILS

**Project Type:** Residential  
**Plot Area:** 3,977.5 sq.m.  
**Total Height:** 24.00 M  
**Levels:** 2 Basements + G + 6  
**Total Units:** 101



## UNIT MIX

**2 Bedroom Apartments:** 61 Units  
**3 Bedroom Apartments:** 25 Units  
**4 Bedroom Apartments:** 2 Units  
**3 Bedroom Townhouses:** 4 Units  
**4 Bedroom Townhouses:** 9 Units

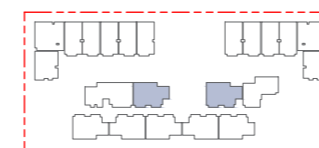
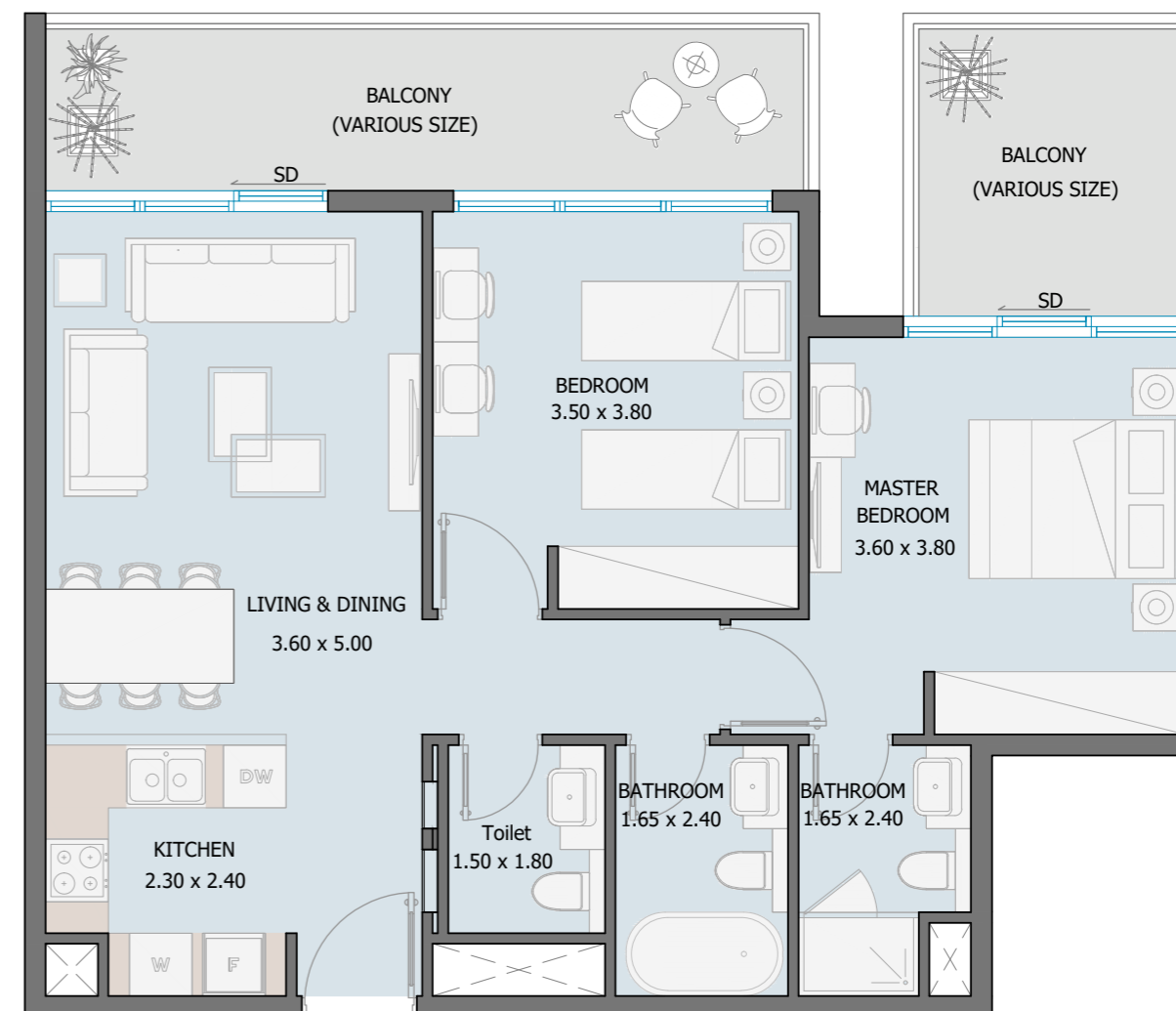
# TOWER UNIT TYPES

SCAN TO VIEW UNIT TYPES  
ON YOUR DEVICE



All drawings and dimensions are approximate. Drawings are not to scale and are subject to change without notice. The developer reserves the right to make revisions. The units are measured at typical floors in the building and columns may vary in size depending on the floor level. The furnishing and accessories shown are for representation only. The availability, length and width of the balcony varies depending on which floor and which orientation the unit is located within the building. There will be slight differences in the internal areas between the same unit types depending on the shaft sizes that go through the units.

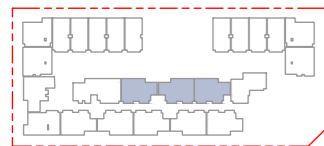
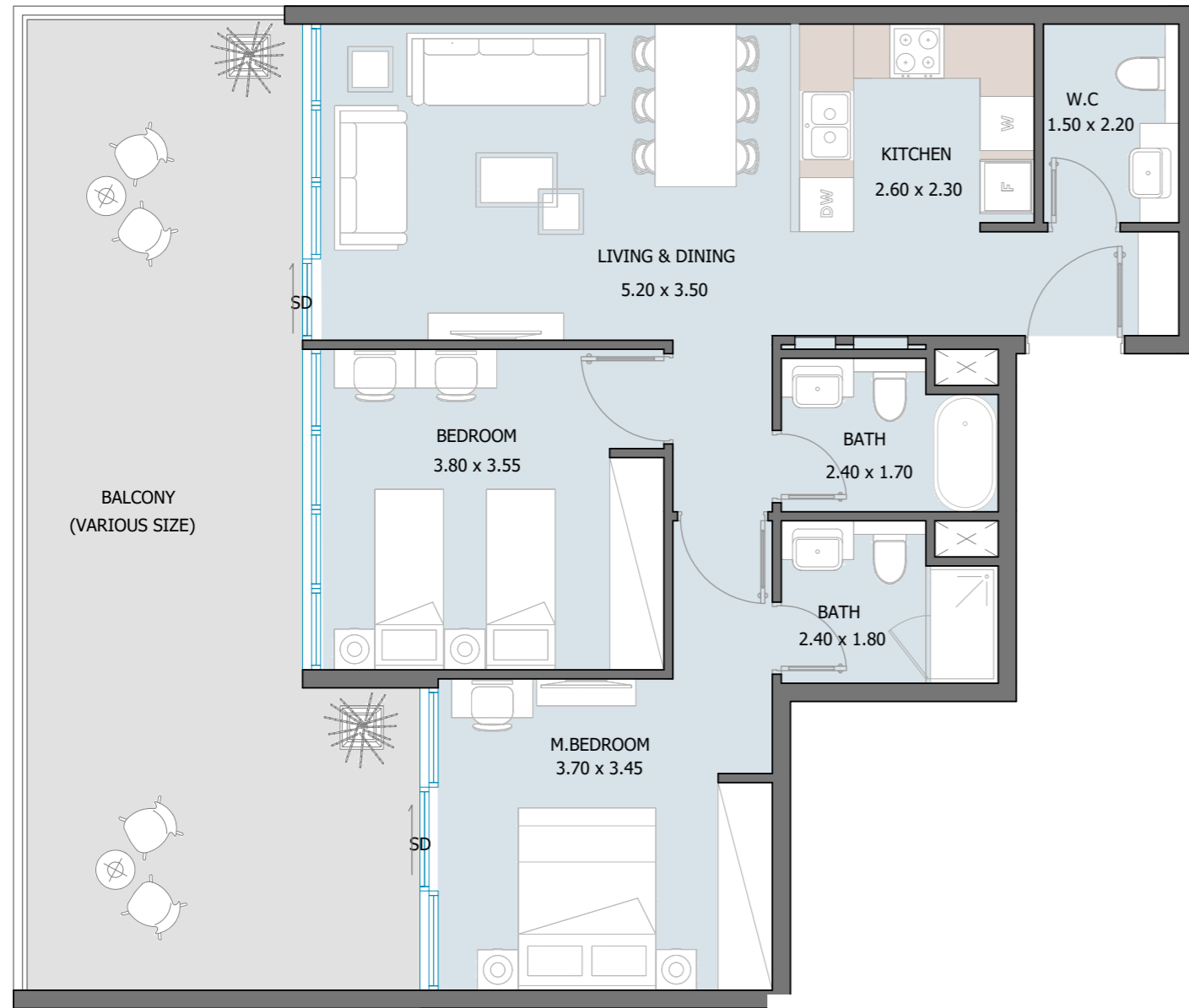
## 2 BEDROOM TYPE A Ground to 6th Floor



Internal Area	808.37 sq.ft
Outdoor Area	194.72 to 704.50 sq.ft
Total Area	1003.09 to 1512.87 sq.ft

# 2 BEDROOM TYPE B

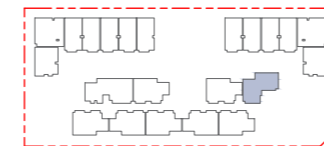
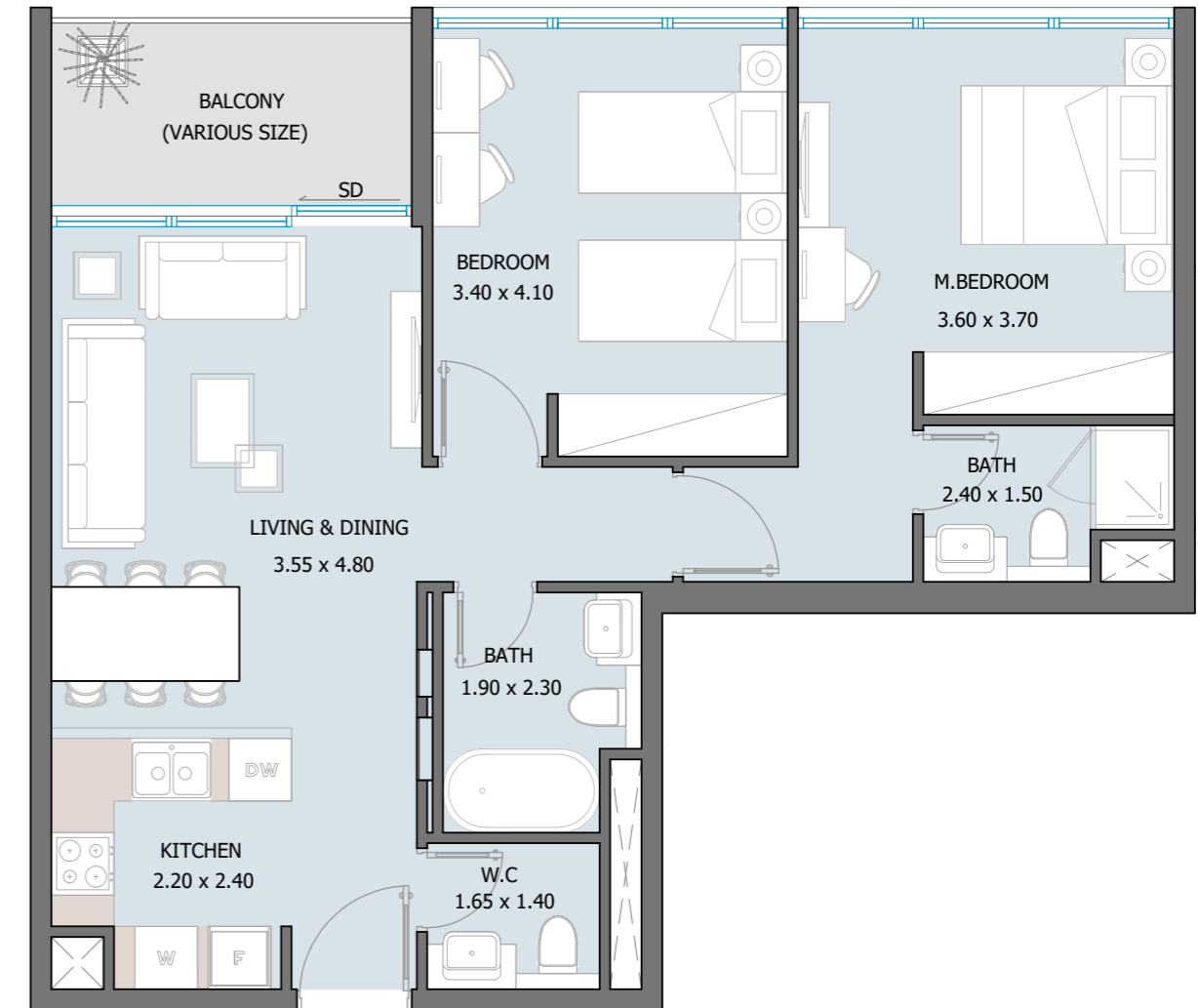
1st to 2nd Floor



Internal Area	847.44 sq.ft
Outdoor Area	353.27 to 426.90 sq.ft
Total Area	1200.71 to 1274.34 sq.ft

# 2 BEDROOM TYPE C

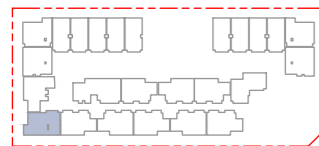
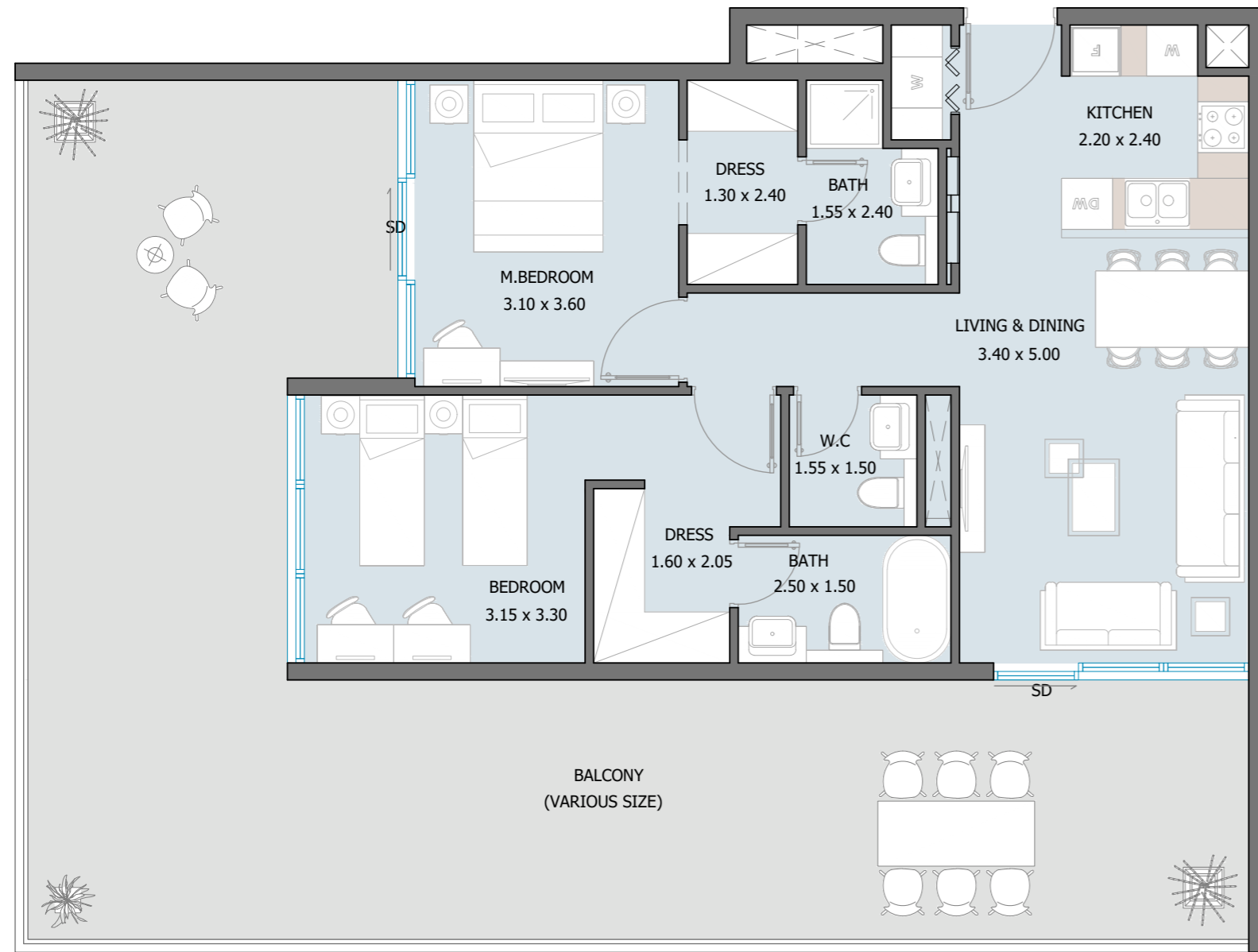
Ground to 4th Floor



Internal Area	820.21 to 820.32 sq.ft
Outdoor Area	72.44 to 191.38 sq.ft
Total Area	892.65 to 1011.59 sq.ft

# 2 BEDROOM TYPE D

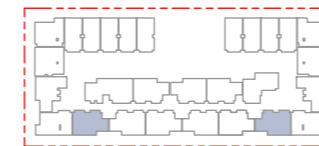
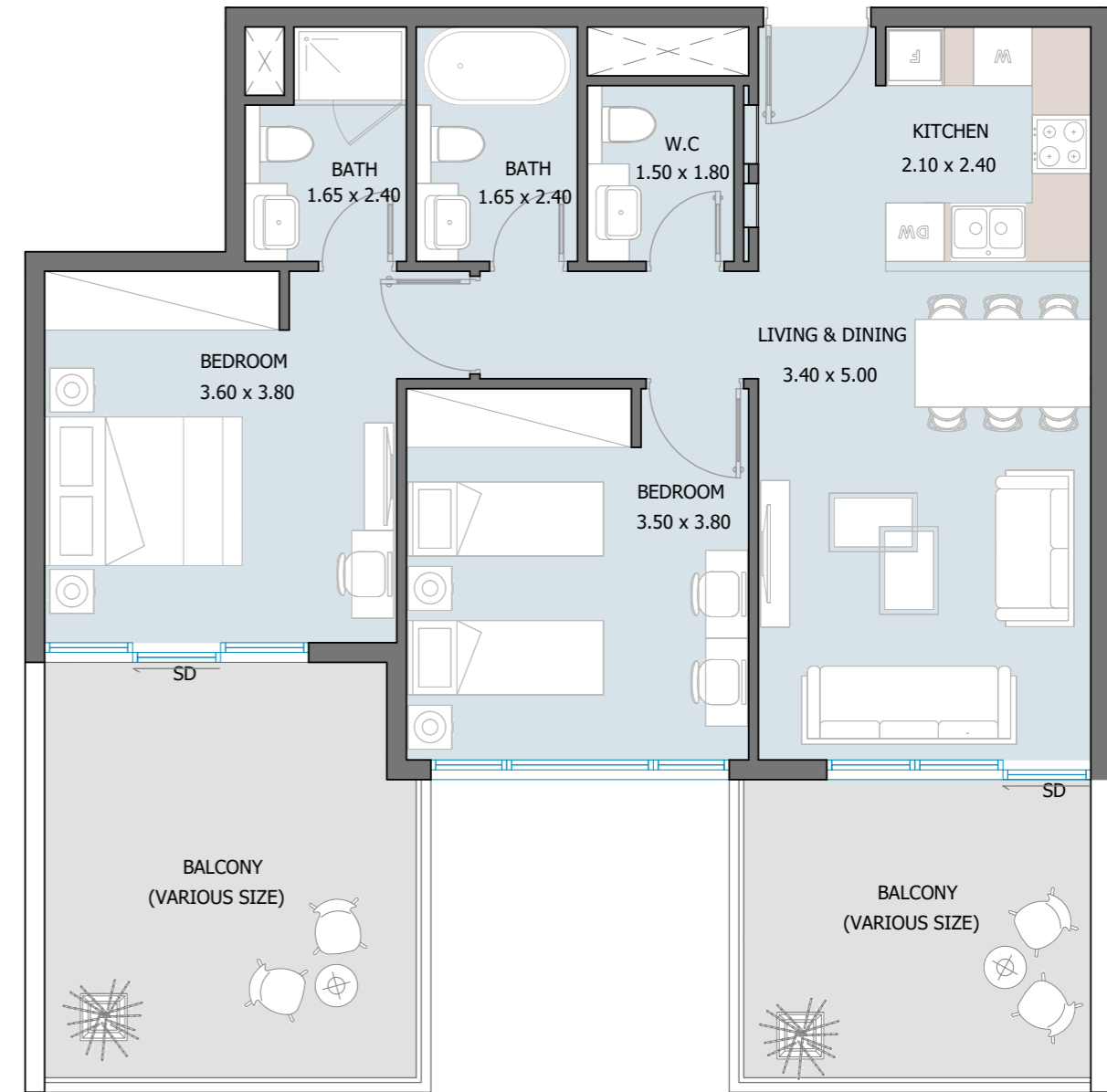
1st to 2nd Floor



Internal Area	841.84 sq.ft
Outdoor Area	598.15 to 802.66 sq.ft
Total Area	1439.99 to 1644.51 sq.ft

# 2 BEDROOM TYPE E

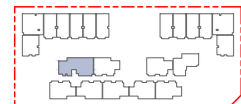
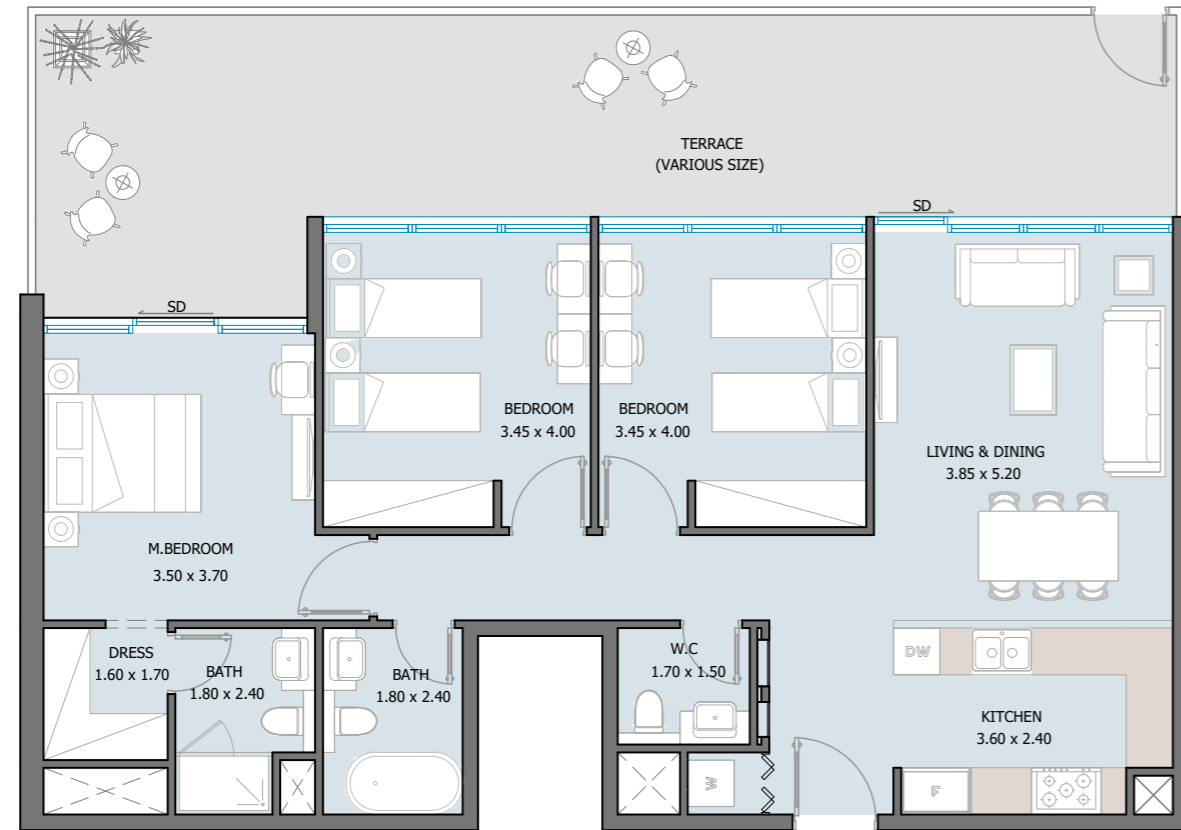
2nd to 6th Floor



Internal Area	796.21 sq.ft
Outdoor Area	253.92 to 553.16 sq.ft
Total Area	1050.13 to 1349.36 sq.ft

# 3 BEDROOM TYPE A

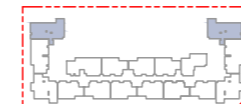
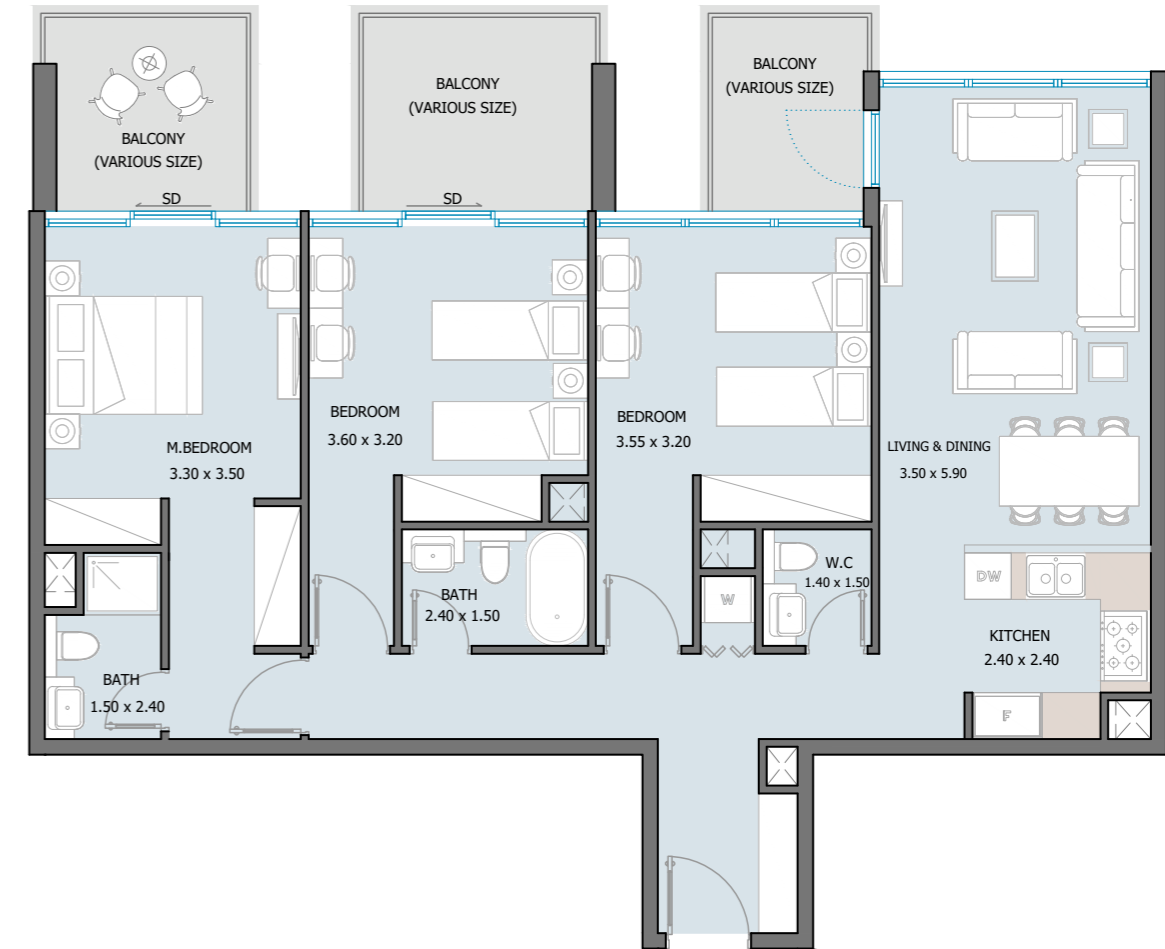
Ground to 5th Floor



Internal Area	1110.62 sq.ft
Outdoor Area	285.89 to 680.28 sq.ft
<b>Total Area</b>	<b>1396.51 to 1790.90 sq.ft</b>

# 3 BEDROOM TYPE B

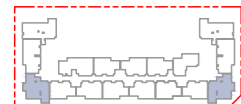
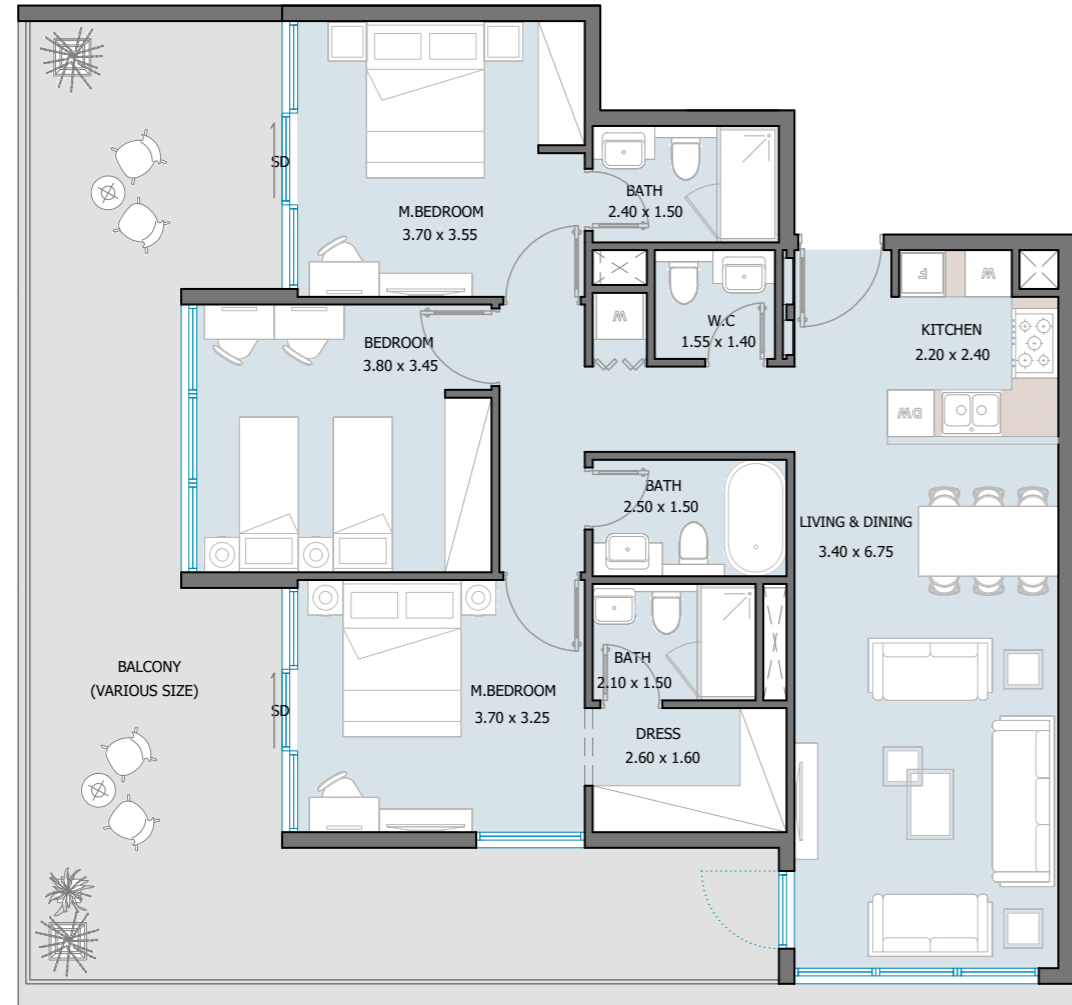
3rd to 4th Floor



Internal Area	1191.35 sq.ft
Outdoor Area	239.93 to 1204.05 sq.ft
<b>Total Area</b>	<b>1431.28 to 2395.40 sq.ft</b>

# 3 BEDROOM TYPE C

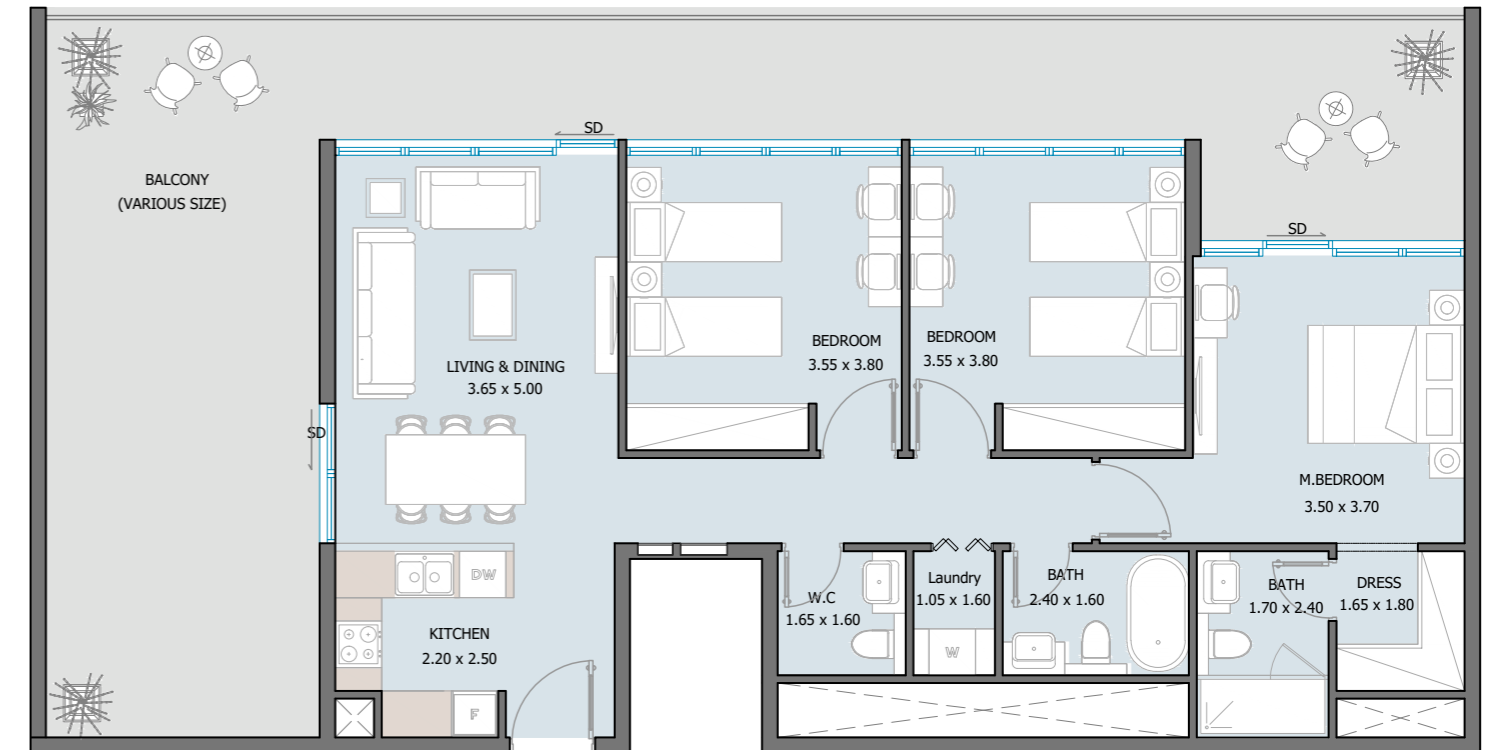
3rd to 4th Floor



Internal Area	1127.30 sq.ft
Outdoor Area	529.37 to 899.97 sq.ft
<b>Total Area</b>	<b>1656.67 to 2027.27 sq.ft</b>

# 3 BEDROOM TYPE D

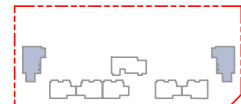
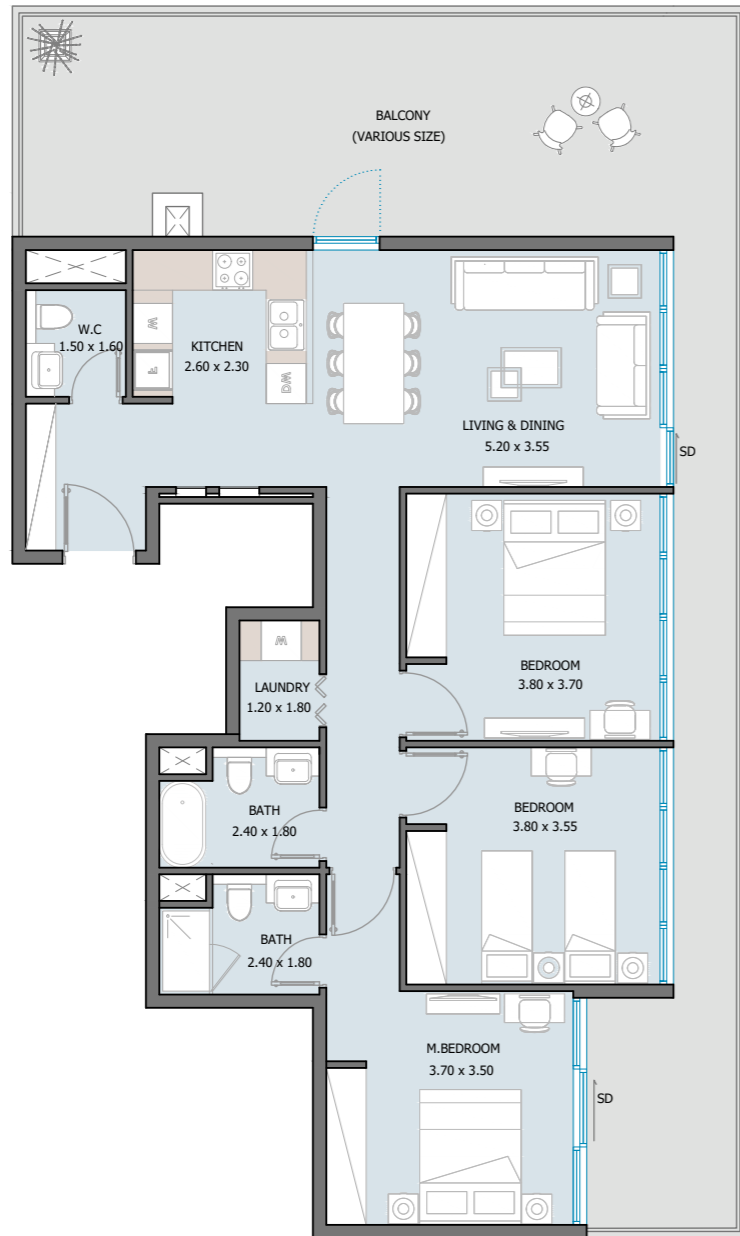
5th to 6th Floor



Internal Area	1078.97 sq.ft
Outdoor Area	474.37 to 819.46 sq.ft
<b>Total Area</b>	<b>1553.34 to 1898.43 sq.ft</b>

# 3 BEDROOM TYPE E

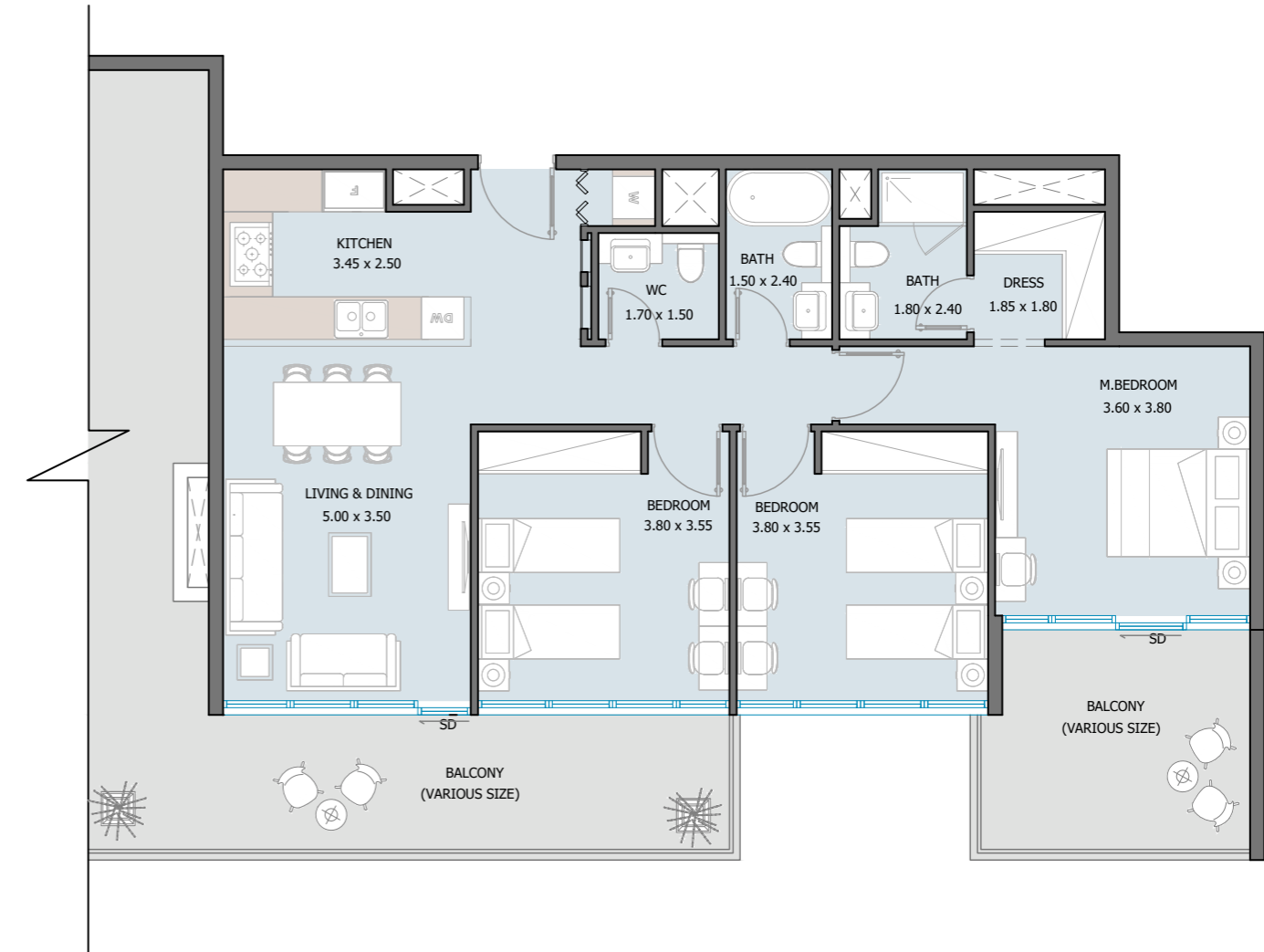
6th Floor



Internal Area	1128.70 sq.ft
Outdoor Area	633.89 to 831.73 sq.ft
<b>Total Area</b>	<b>1762.59 to 1960.43 sq.ft</b>

# 3 BEDROOM TYPE F

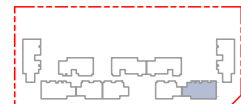
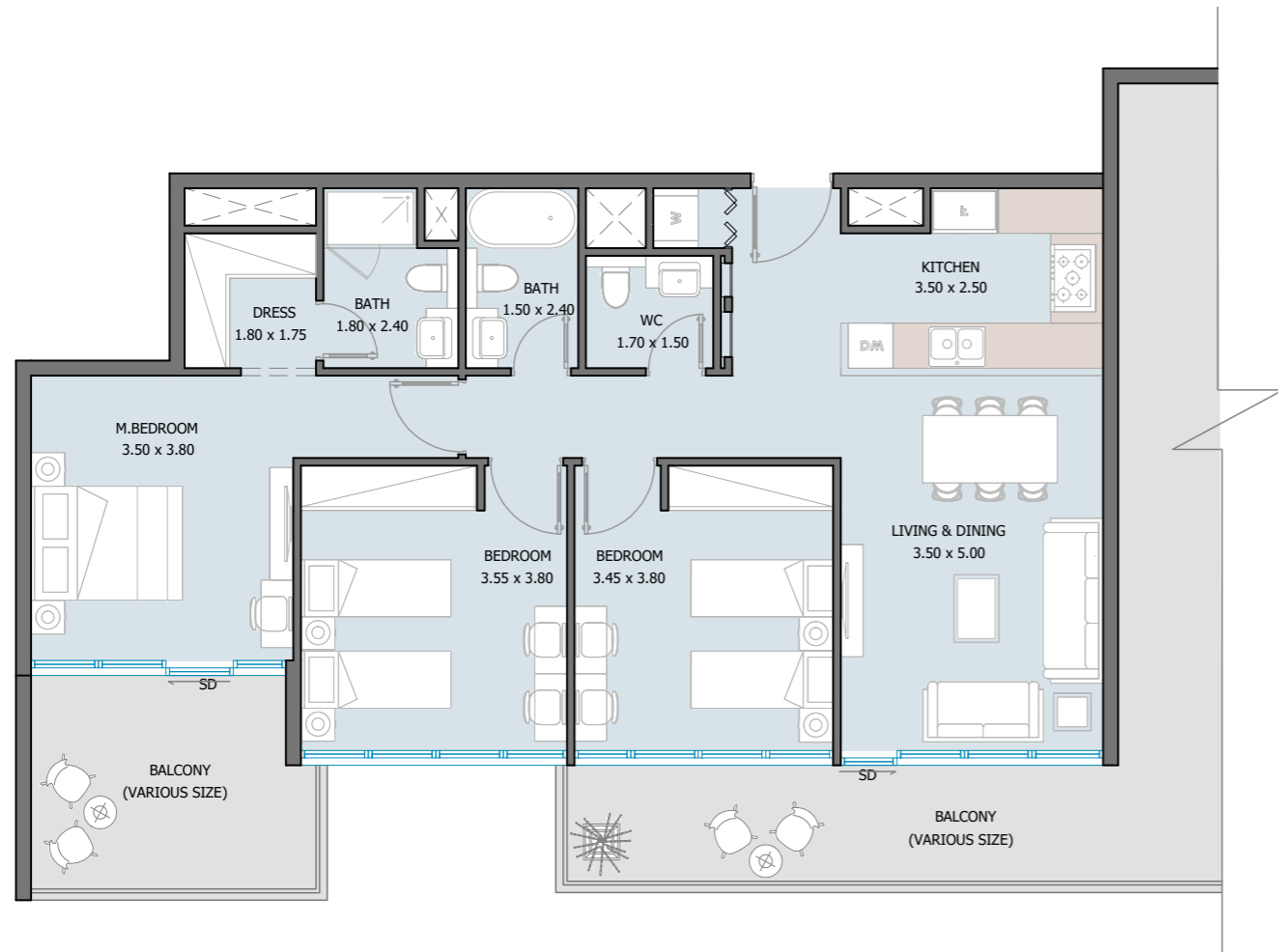
5th Floor



Internal Area	1105.02 sq.ft
Outdoor Area	1241.83 sq.ft
<b>Total Area</b>	<b>2346.85 sq.ft</b>

# 3 BEDROOM TYPE G

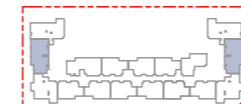
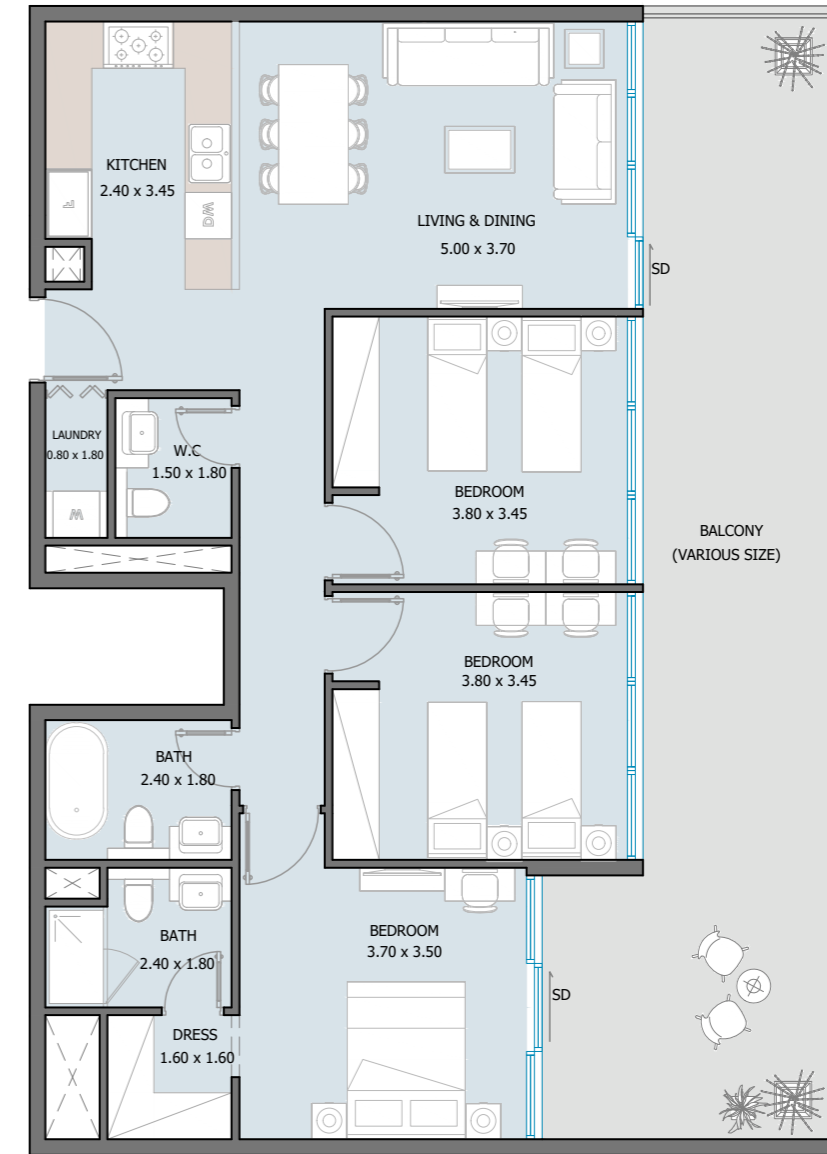
5th Floor



Internal Area	1090.28 sq.ft
Outdoor Area	1100.39 sq.ft
<b>Total Area</b>	<b>2190.67 sq.ft</b>

# 3 BEDROOM TYPE H

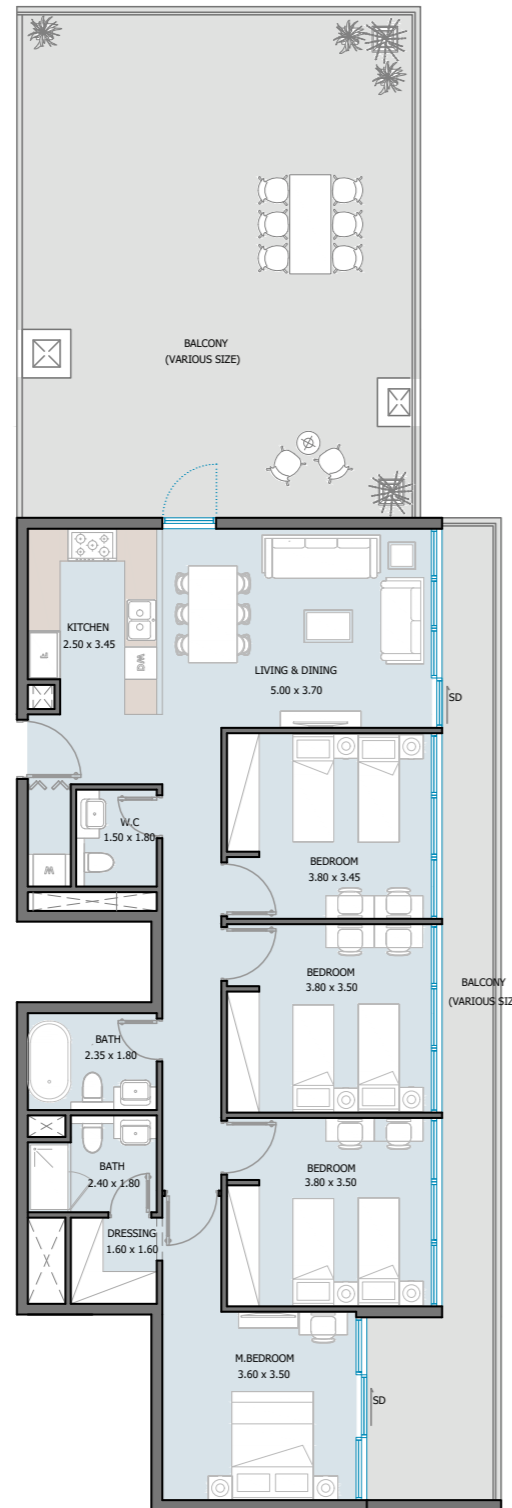
3rd to 4th Floor



Internal Area	1092.86 sq.ft
Outdoor Area	379.97 to 467.58 sq.ft
<b>Total Area</b>	<b>1472.82 to 1560.44 sq.ft</b>

# 4 BEDROOM TYPE A

## 5th Floor



Internal Area	1315.46 sq.ft
Outdoor Area	1023.75 to 1276.60 sq.ft
Total Area	2339.21 to 2592.05 sq.ft

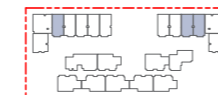
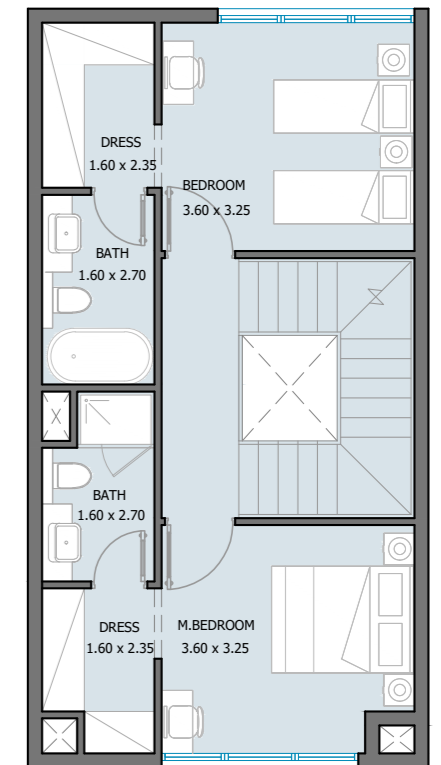
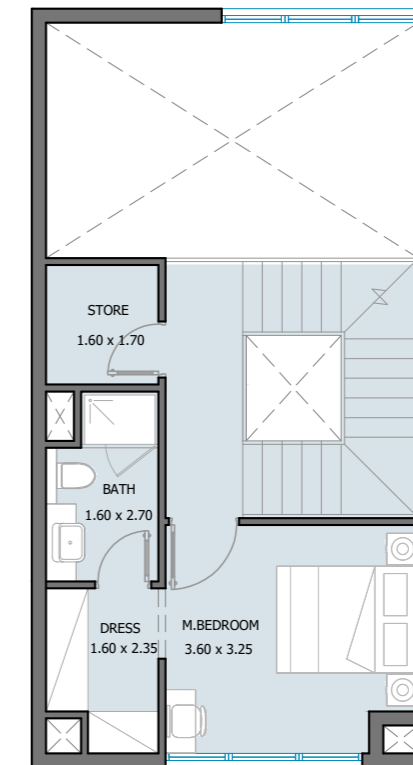
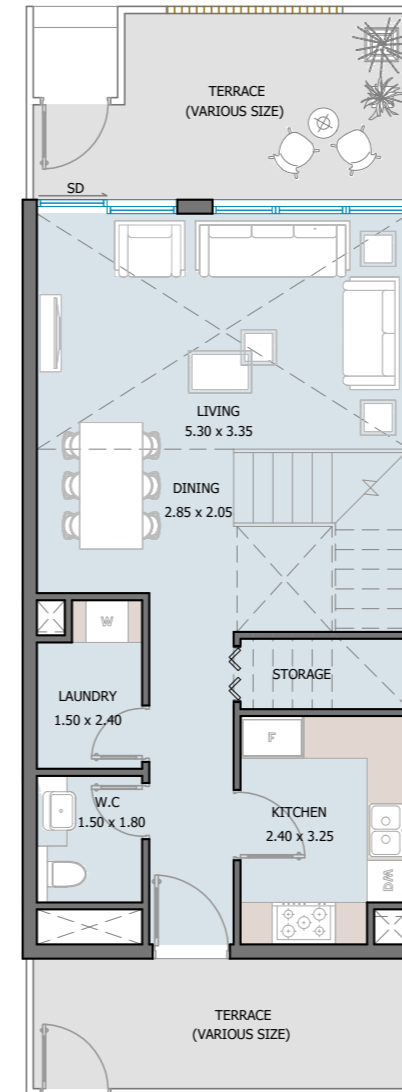


# 3 BEDROOM TYPE A

## Townhouse

# TOWNHOUSE

## UNIT TYPES



Internal Area	1613.51 sq.ft
Outdoor Area	260.70 sq.ft
<b>Total Area</b>	<b>1874.21 sq.ft</b>

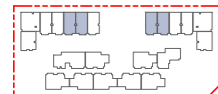
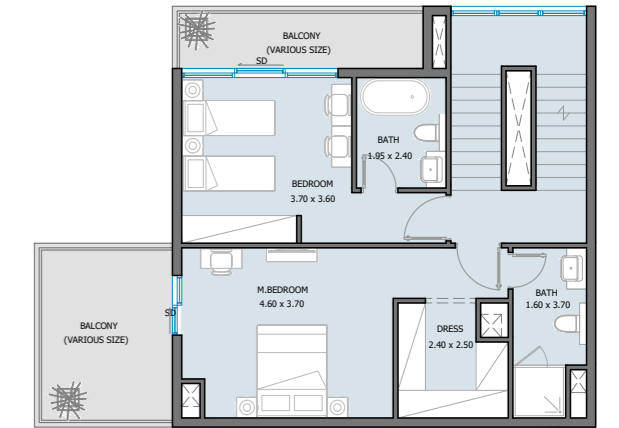
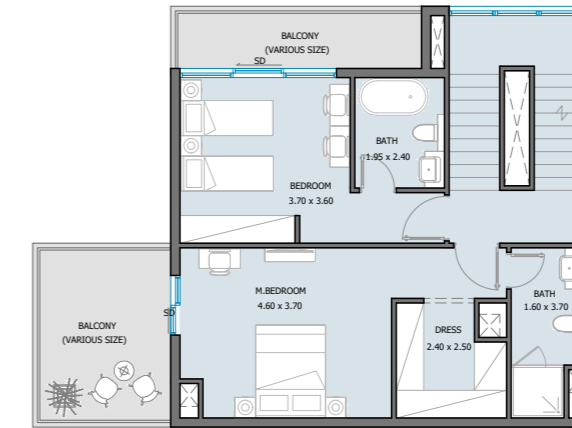
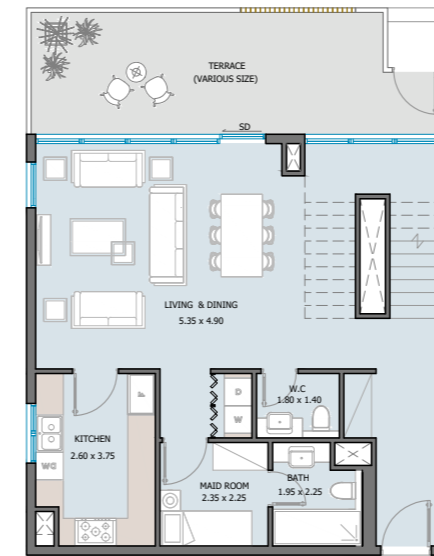
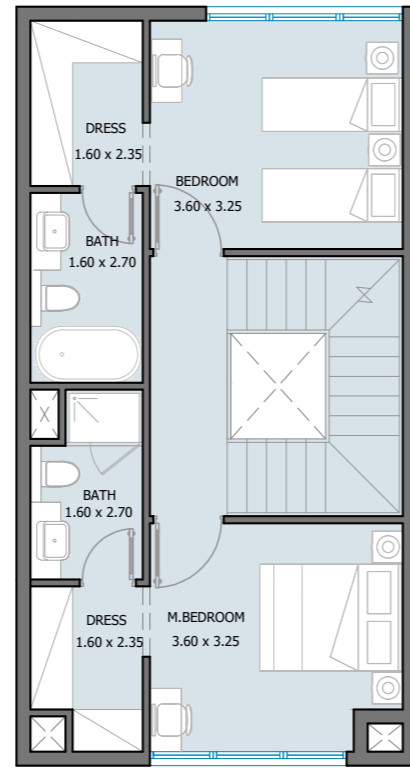
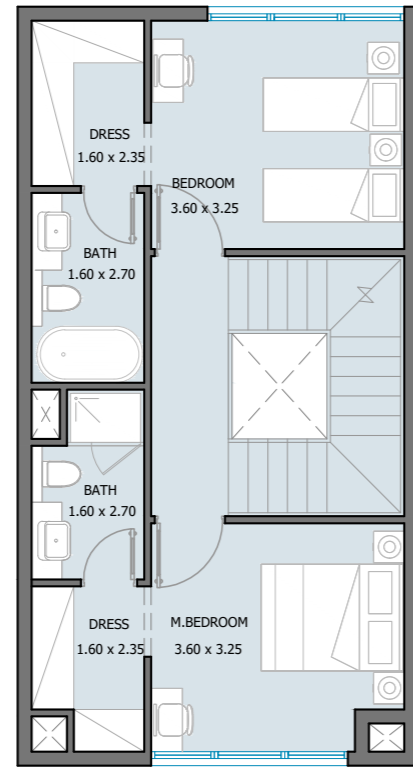
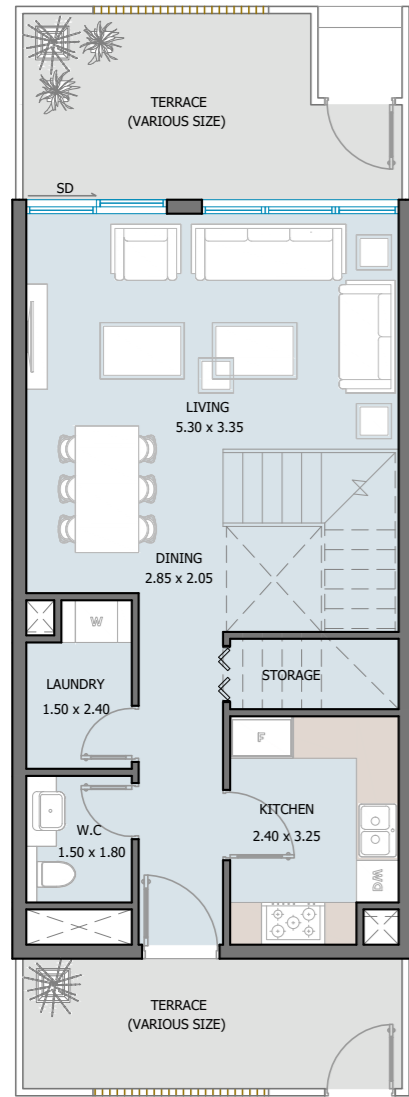
# 4 BEDROOM TYPE A

## Townhouse

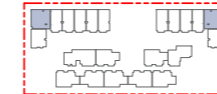


# 4 BEDROOM TYPE B

## Townhouse



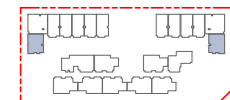
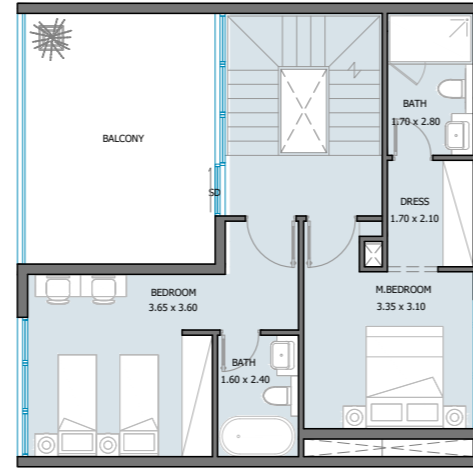
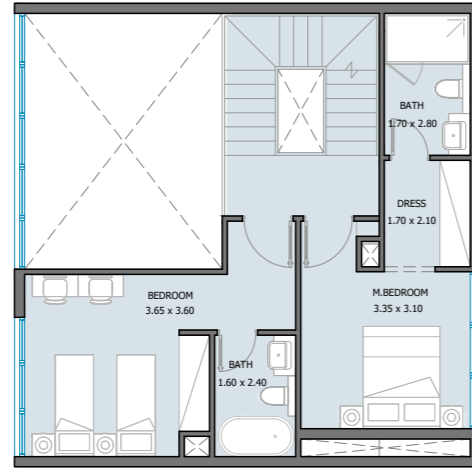
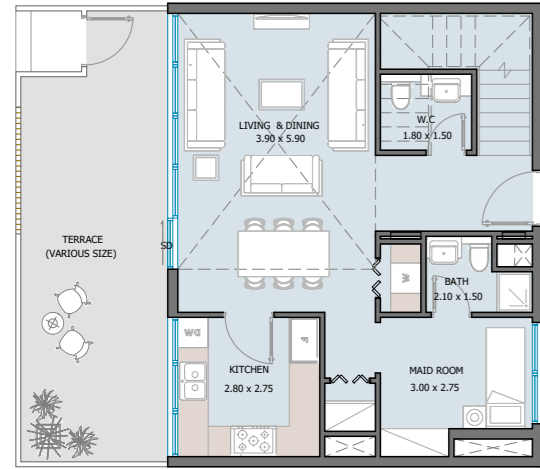
Internal Area	1823.30 to 1855.16 sq.ft
Outdoor Area	246.82 to 260.70 sq.ft
Total Area	2084.0 to 2101.97 sq.ft



Internal Area	2402.50 sq.ft
Outdoor Area	667.79 to 1000.40 sq.ft
Total Area	3070.29 to 3402.90 sq.ft

# 4 BEDROOM TYPE C

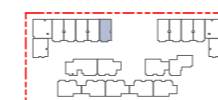
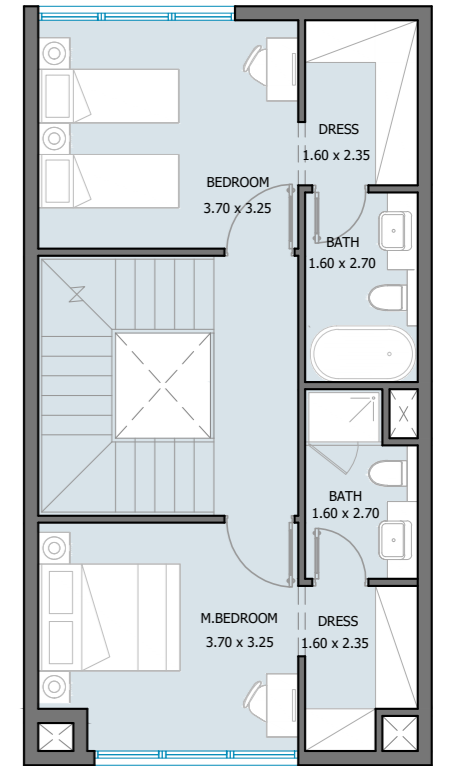
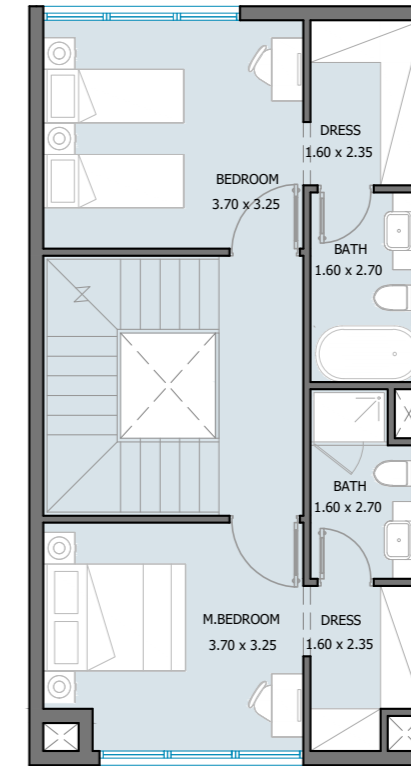
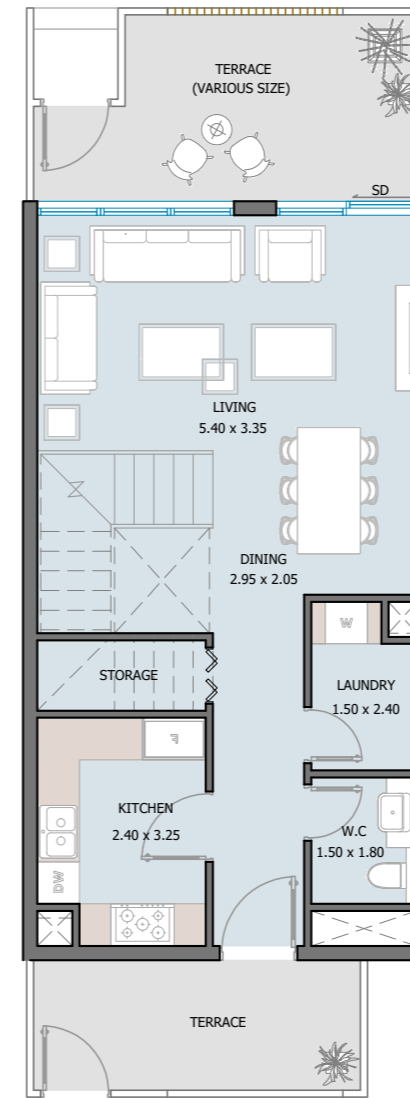
## Townhouse



Internal Area	1937.50 sq.ft
Outdoor Area	491.69 to 736.14 sq.ft
Total Area	2429.20 to 2673.65 sq.ft

# 4 BEDROOM TYPE D

## Townhouse



Internal Area	1888.31 sq.ft
Outdoor Area	251.98 sq.ft
Total Area	2140.29 sq.ft



At Reportage Group, we're proud to be one of the largest private real estate developers in the United Arab Emirates, with projects spanning the UAE, USA, Egypt, Turkey, Saudi Arabia, Uganda, Azerbaijan, Pakistan, and more international markets on the way.

Our focus is clear and consistent: to deliver innovative, sustainable and accessible modern housing solutions that provide outstanding value for investors and a safe, welcoming home for everyone.

Our mission is to be among the most trusted real estate companies in the world, developing homes that are both modern and attainable, while fostering a true sense of belonging. We're excited for what the future holds and remain committed to expanding our footprint across the globe.

# Reportage.

## Abu Dhabi-UAE | Head Office

Tamouh Tower  
28<sup>th</sup> Floor, Al Reem Island  
P.O. Box: 111949  
Tollfree: +971 800 77 55 2  
info@reportageuae.com

## Baku, Azerbaijan

Azerbaijan, Baku City,  
Uzeyir Hajibəyov 33 street  
+994 10 236 40 46  
Info@reportageaz.com

## Dubai-UAE

Anantara Business Tower  
3<sup>rd</sup> Floor, Business Bay  
P.O. Box: 27446  
Tollfree: +971 800 77 55 2  
info@reportageuae.com

## Cairo-Egypt

Building 217  
North Teseen St.  
New Cairo  
T: +20 12 0008 1190  
info@reportageeg.com

## Istanbul-Türkiye

Maslak Mh. Sümer Sk.  
No:4, İç Kapı No:3, Bodrum Kat,  
Maslak Office Building ( MOB) Sanyer  
T: +90 530 774 9595  
info@reportage.com.tr

## Riyadh-KSA

Building No. 3230  
Al Aflaj St., Al Suwaidi  
P.O. Box 12791  
T: +966 11 215 1110  
info@reportageuae.com

## Moscow-Russia

Yefremova Street 10s1, k4/4  
bld sadovye kvartaly  
P.O. Box 119048  
info@reportagerussia.com

## Kampala, Uganda

Plot 4, Philip Road  
Near German Embassy  
Kololo, Kampala, Uganda  
+256 756 111 434 | +256 763 331 572  
info@reportageug.com

## Lahore - Pakistan

Plaza No. 185, Broadway  
Commercial phase 8, DHA Lahore  
+923309991111  
Info@reportageempire.com

## Kigali, Rwanda

KG 334 ST 10, Nyarutarama,  
Kigali, Rwanda  
+250738532168 | +250794100607  
info@reportagerw.com

## Nairobi, Kenya

46 Kabasiran, Lavington  
P.O. box 38802-00623  
Tel. +254 754 108108 / +254 208 108108

## Lagos, Nigeria

No. 2 Obudu Close, Osborne Foreshore  
Estate, Phase 1, Ikoyi, Lagos Nigeria  
+234 810 859 9924  
Info@reportage.ng

For more information, visit [reportageuae.com](http://reportageuae.com) or call  
**800 77 55 2 | +971 50 244 1078**



### Legal Disclaimer:

The information contained in this brochure is confidential and is for the exclusive use of the recipient. This brochure may not be reproduced, distributed, delivered, or furnished to any person without the prior written approval of Reportage Properties. No representation or warranty (expressed or implied) is made or can be given with respect to the accuracy or completeness of the information herein, or that any future offer of units or apartments in the project will conform to the terms described herein. Nothing in this leaflet should be constructed as financial, legal, tax or regulatory advice. All accessories such as electronics, furniture, white goods, decorative elements and so forth included in this brochure are not part of the standard unit and used for illustration purposes only. All plans, layouts, pictures, renderings, information and details included in this brochure are indicative only and may change at any time up to the final 'as built' status in accordance with final designs of the project and regulatory approvals and planning permissions.



**Reportage.**

REPORTAGEUAE.COM

