



SILA

MASDAR CITY



Kuyuluğu

SILA

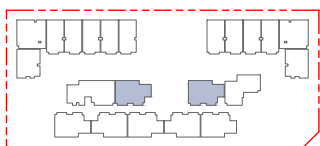
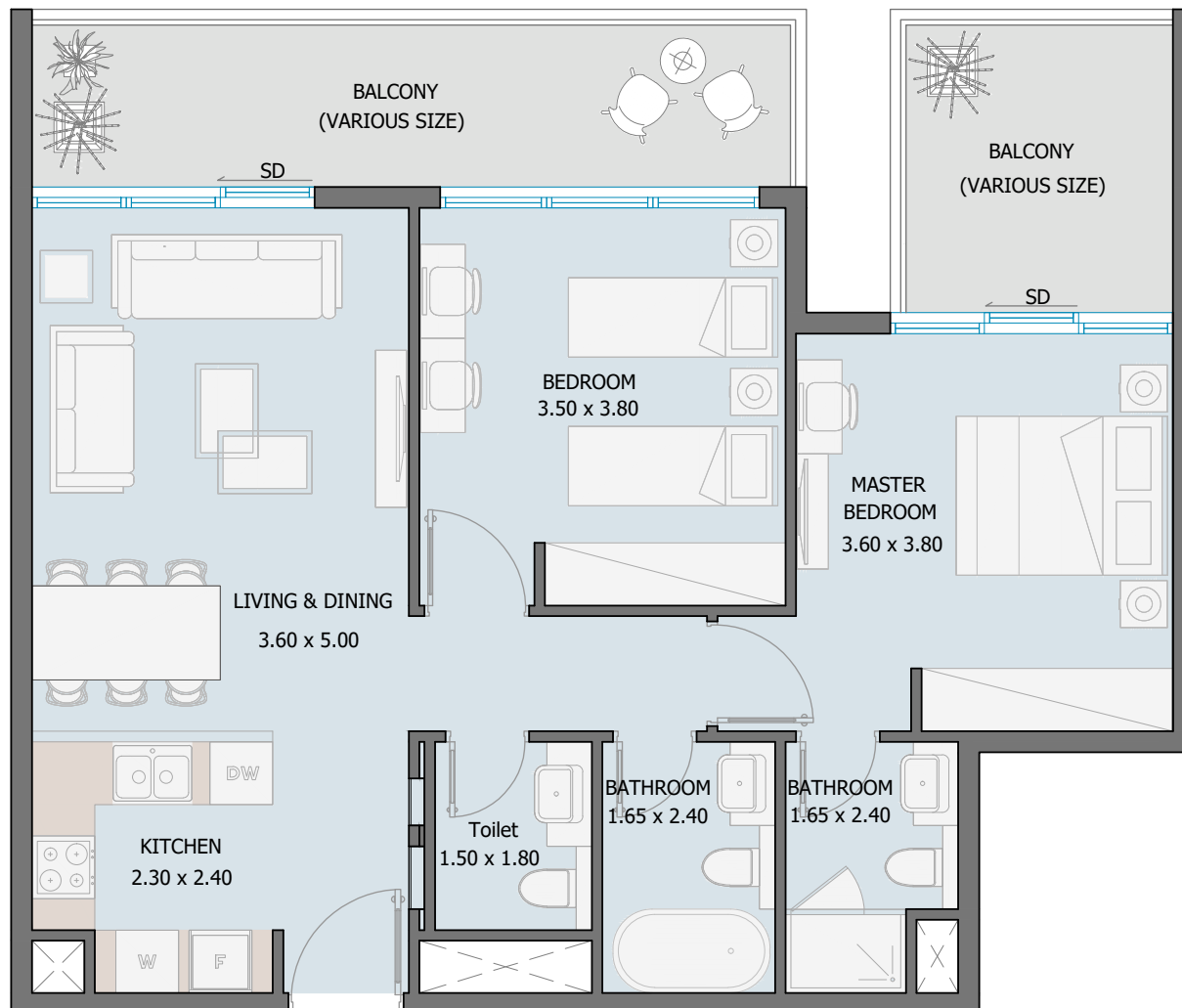
AYDINLIK



TOWER
UNIT TYPES

2 BEDROOM TYPE A

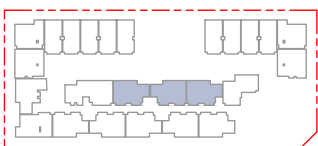
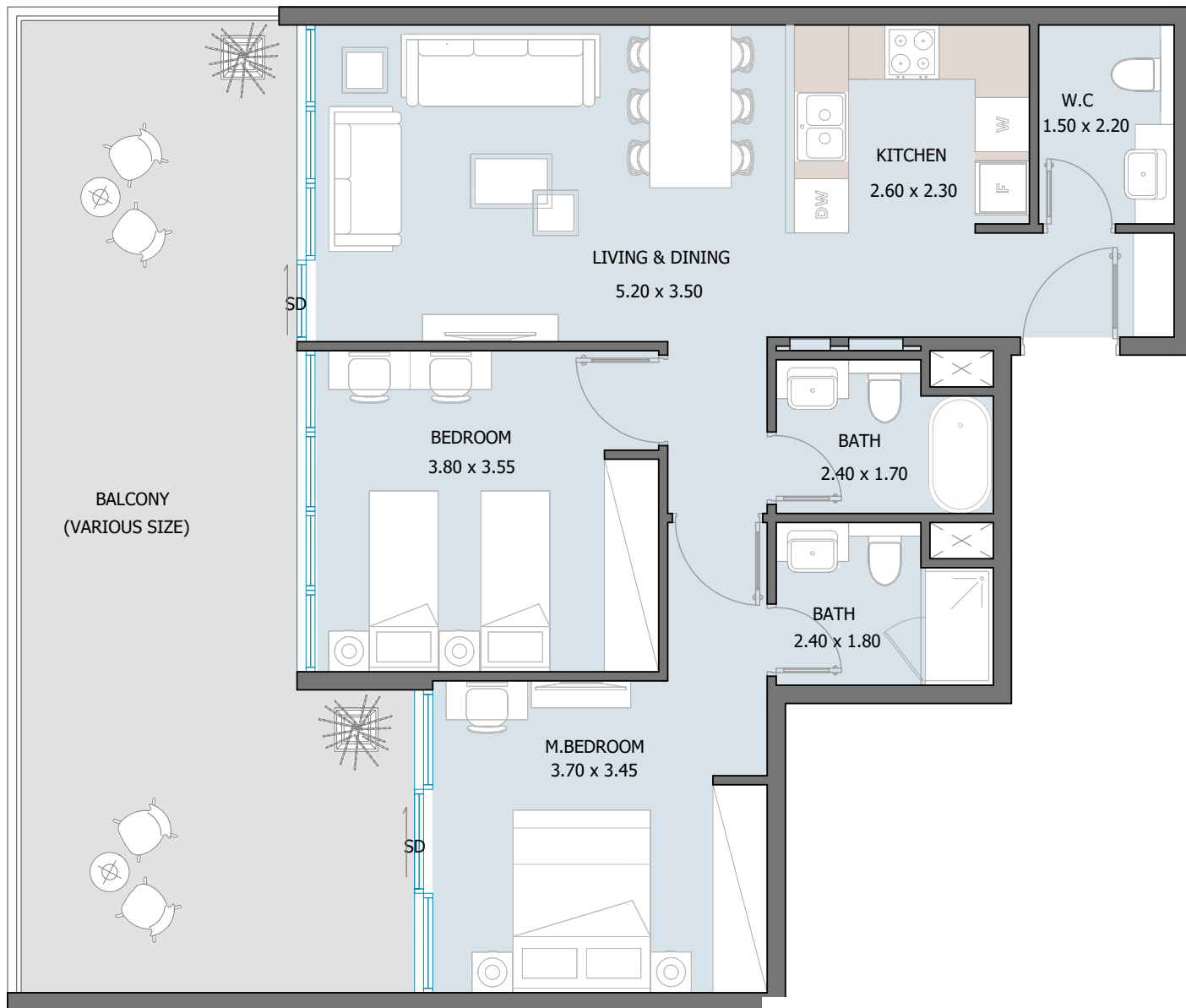
Ground - 6th Floor



Internal Area	808.37 sq.ft
Outdoor Area	194.72 to 704.50 sq.ft
Total Area	1003.09 to 1512.87 sq.ft

2 BEDROOM TYPE B

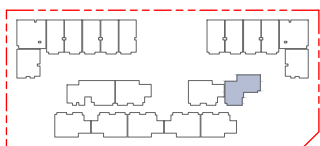
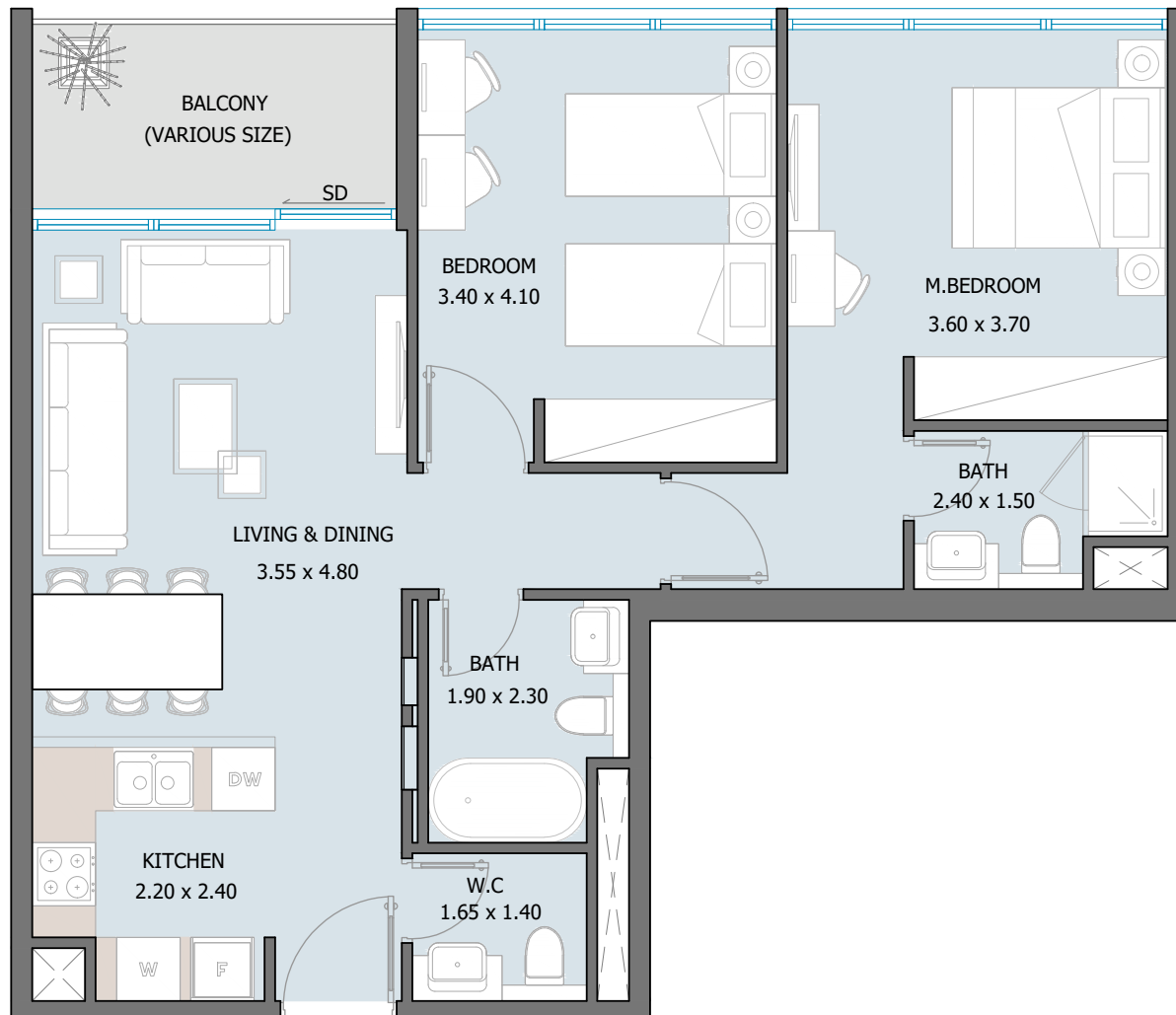
1st - 2nd Floor



Internal Area	847.44 sq.ft
Outdoor Area	353.27 to 426.90 sq.ft
Total Area	1200.71 to 1274.34 sq.ft

2 BEDROOM TYPE C

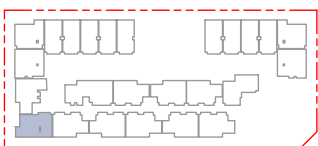
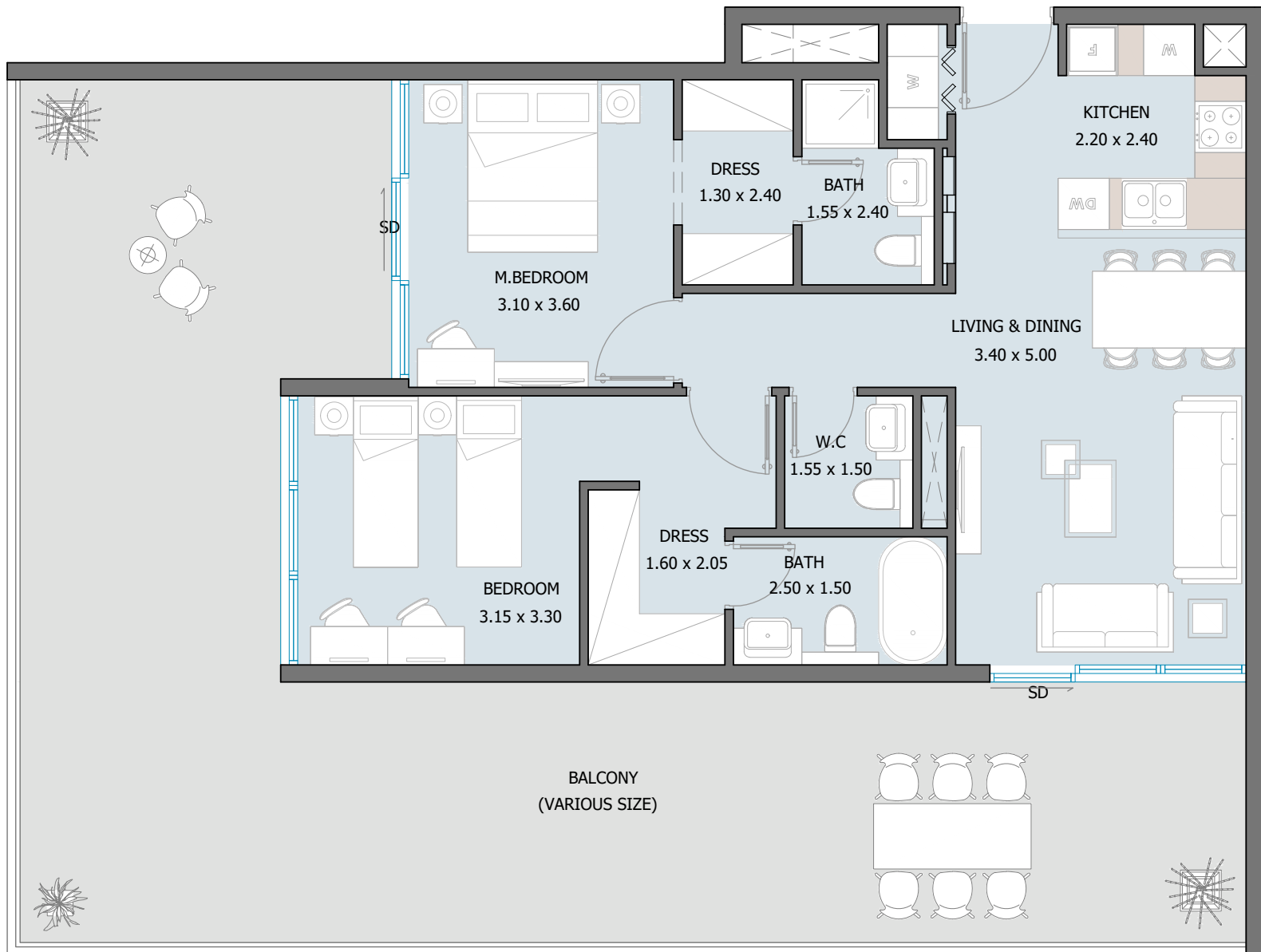
Ground - 4th Floor



Internal Area	820.21 to 820.32 sq.ft
Outdoor Area	72.44 to 191.38 sq.ft
Total Area	892.65 to 1011.59 sq.ft

2 BEDROOM TYPE D

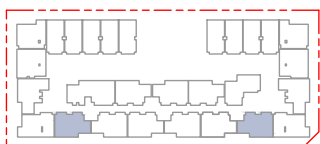
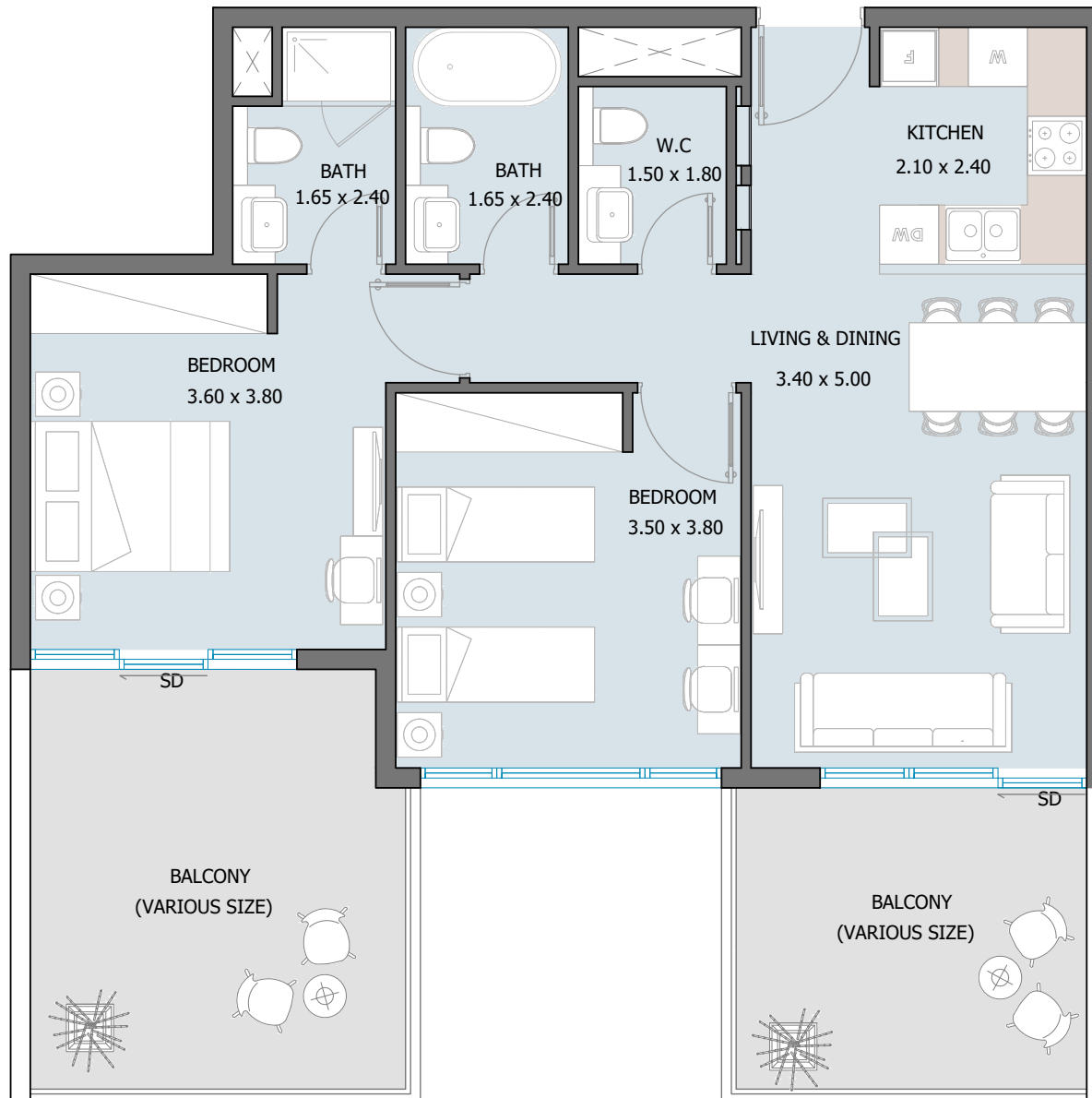
1st - 2nd Floor



Internal Area	841.84 sq.ft
Outdoor Area	598.15 to 802.66 sq.ft
Total Area	1439.99 to 1644.51 sq.ft

2 BEDROOM TYPE E

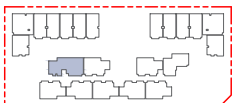
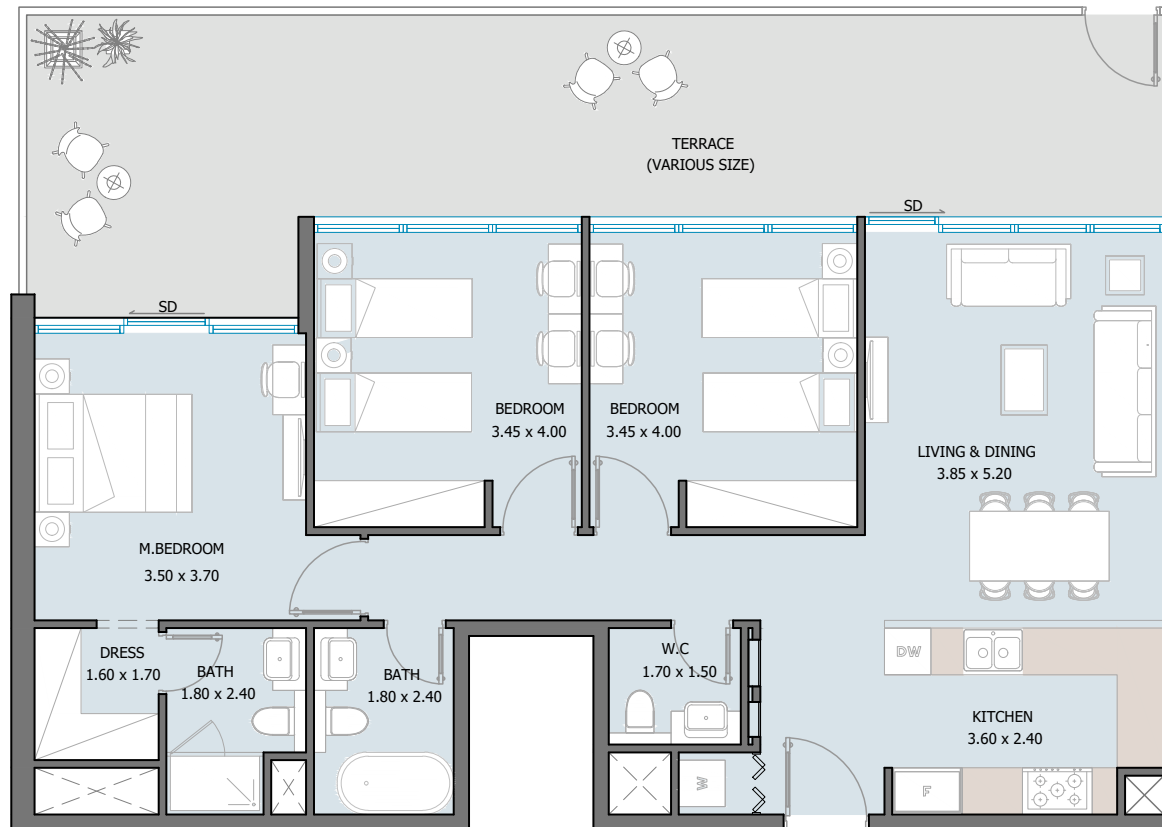
2nd - 6th Floor



Internal Area	796.21 sq.ft
Outdoor Area	253.92 to 553.16 sq.ft
Total Area	1050.13 to 1349.36 sq.ft

3 BEDROOM TYPE A

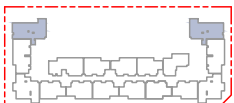
Ground - 5th Floor



Internal Area	1110.62 sq.ft
Outdoor Area	285.89 to 680.28 sq.ft
Total Area	1396.51 to 1790.90 sq.ft

3 BEDROOM TYPE B

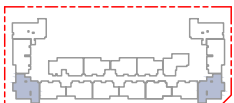
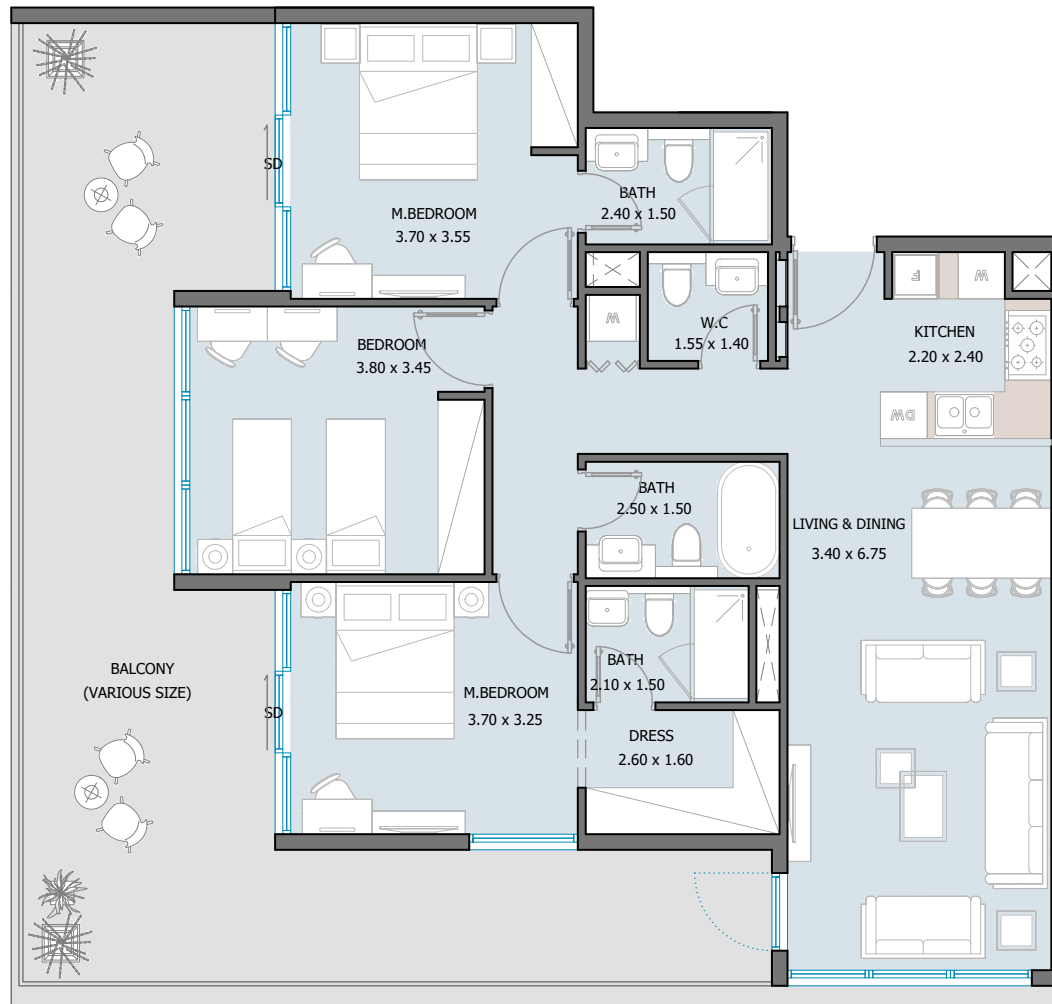
3rd - 4th Floor



Internal Area	1191.35 sq.ft
Outdoor Area	239.93 to 1204.05 sq.ft
Total Area	1431.28 to 2395.40 sq.ft

3 BEDROOM TYPE C

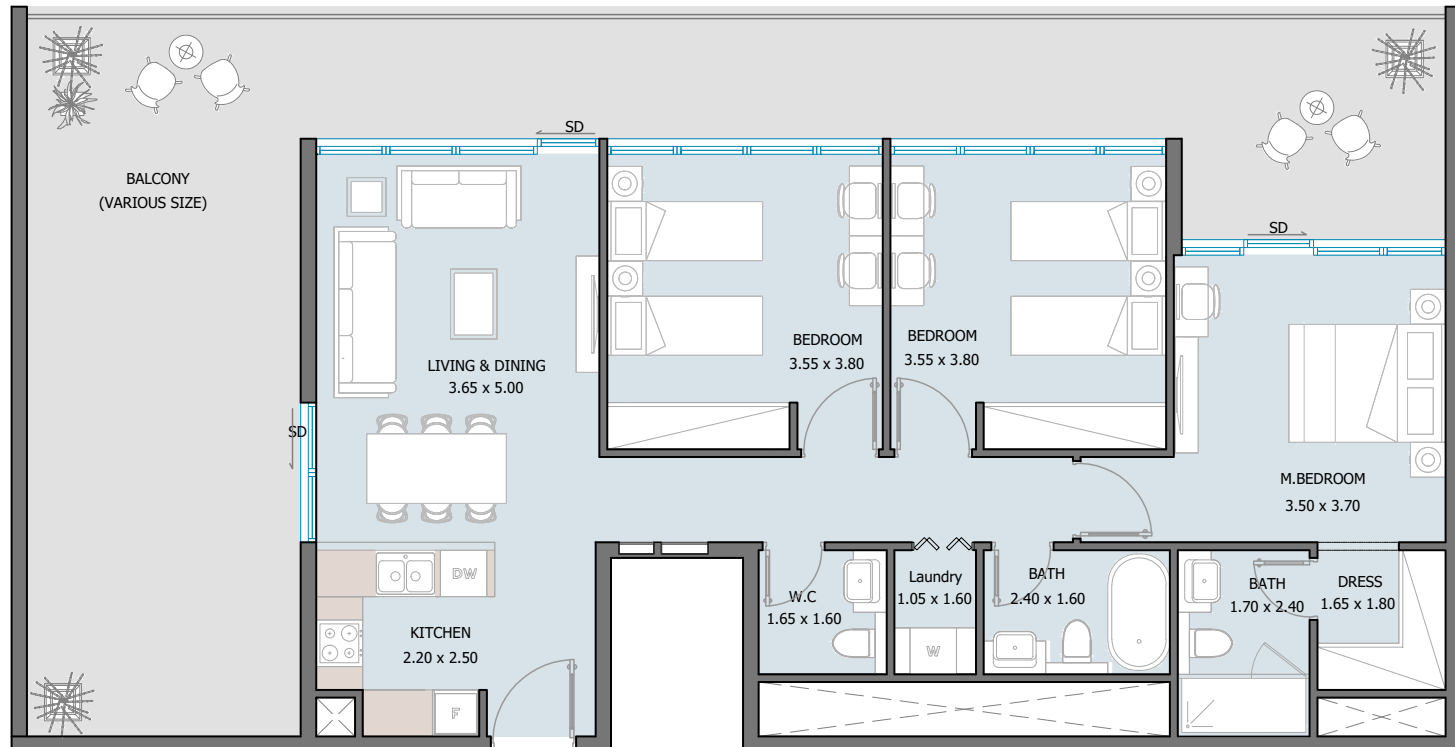
3rd - 4th Floor



Internal Area	1127.30 sq.ft
Outdoor Area	529.37 to 899.97 sq.ft
Total Area	1656.67 to 2027.27 sq.ft

3 BEDROOM TYPE D

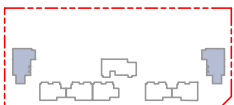
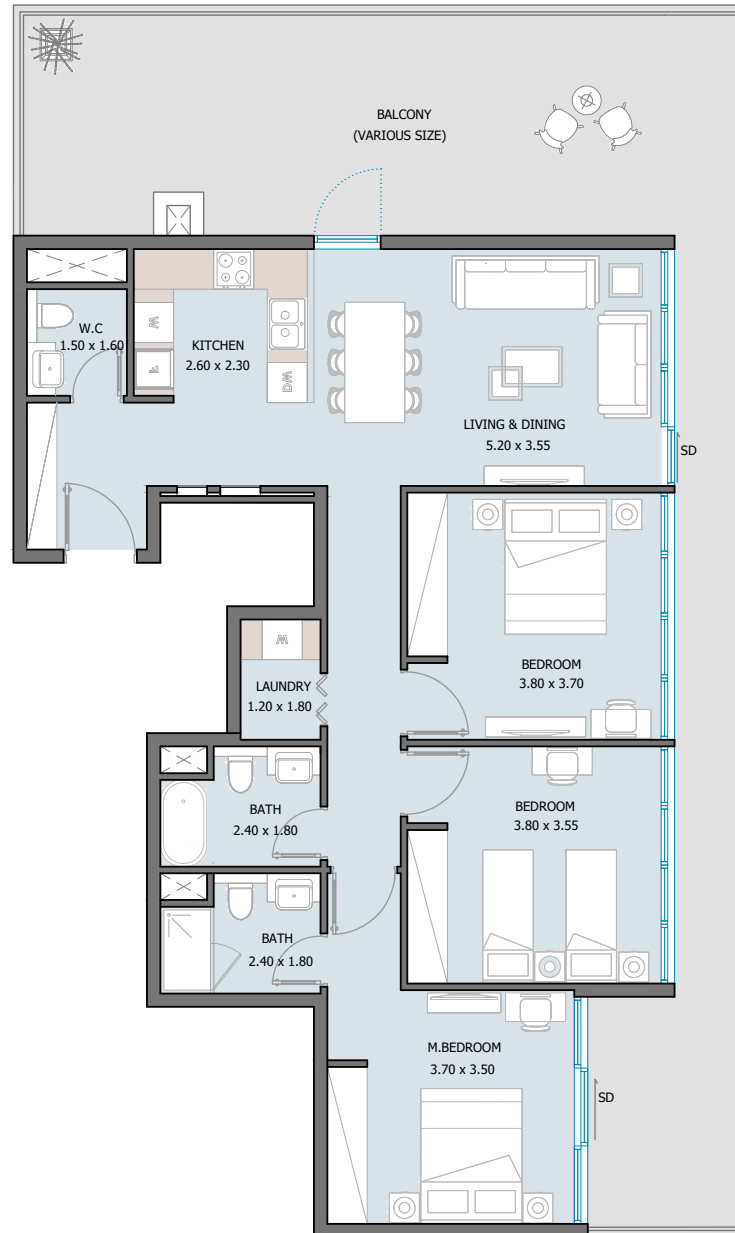
5th - 6th Floor



Internal Area	1078.97 sq.ft
Outdoor Area	474.37 to 819.46 sq.ft
Total Area	1553.34 to 1898.43 sq.ft

2 BEDROOM TYPE E

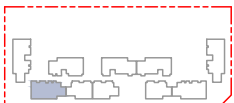
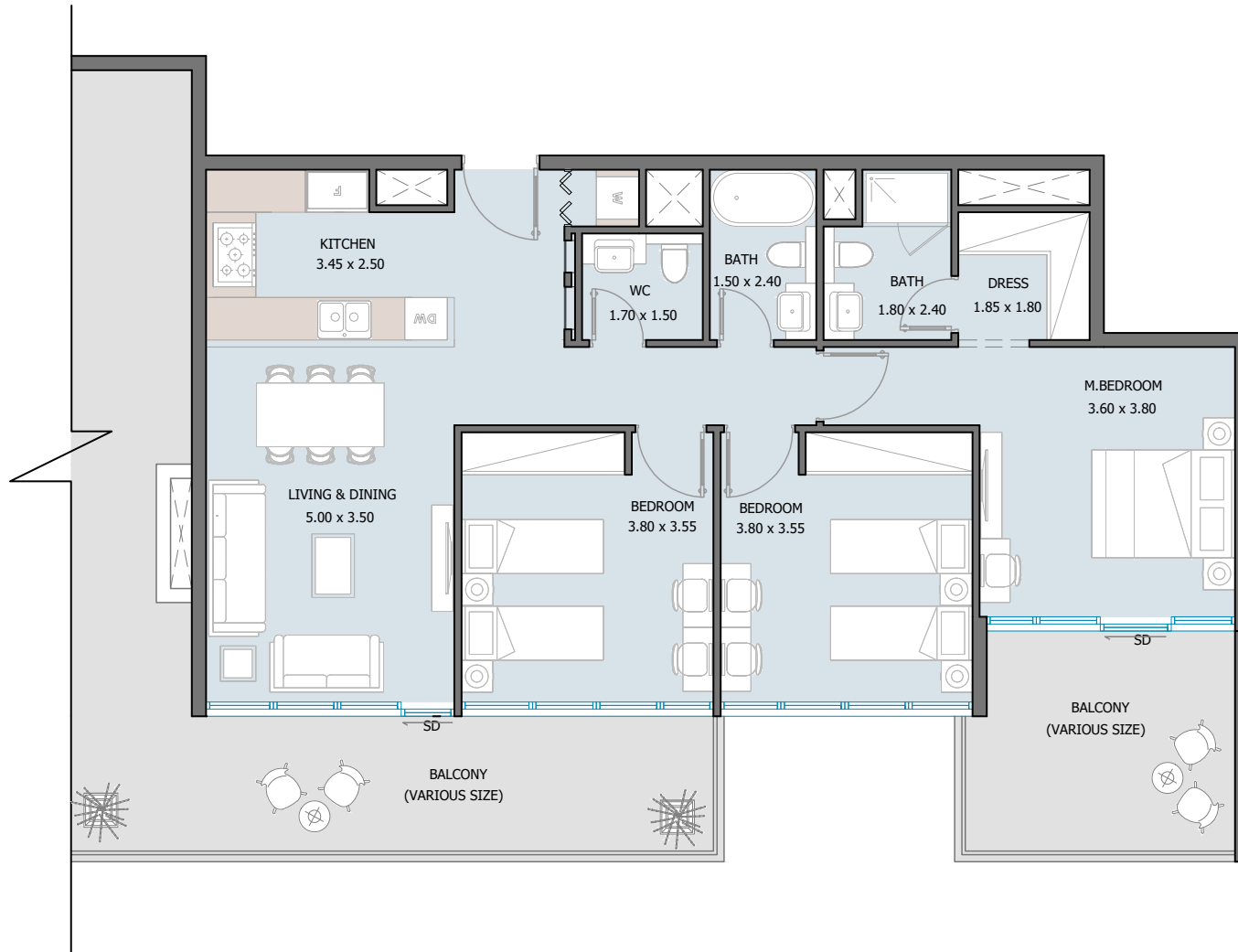
6th Floor



Internal Area	1128.70 sq.ft
Outdoor Area	633.89 to 831.73 sq.ft
Total Area	1762.59 to 1960.43 sq.ft

3 BEDROOM TYPE F

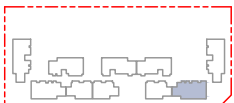
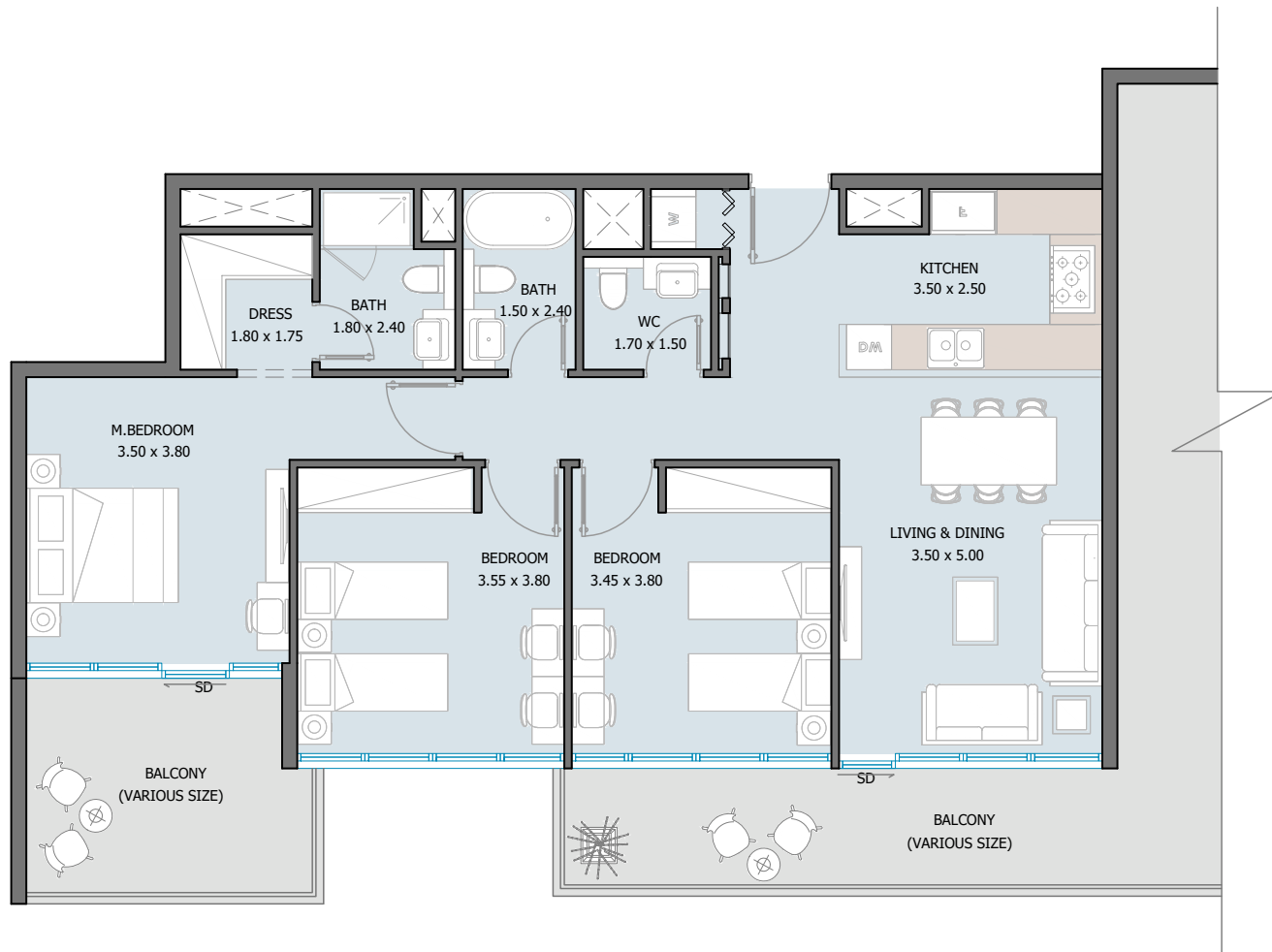
5th Floor



Internal Area	1105.02 sq.ft
Outdoor Area	1241.83 sq.ft
Total Area	2346.85 sq.ft

3 BEDROOM TYPE G

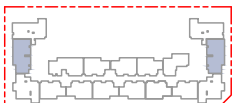
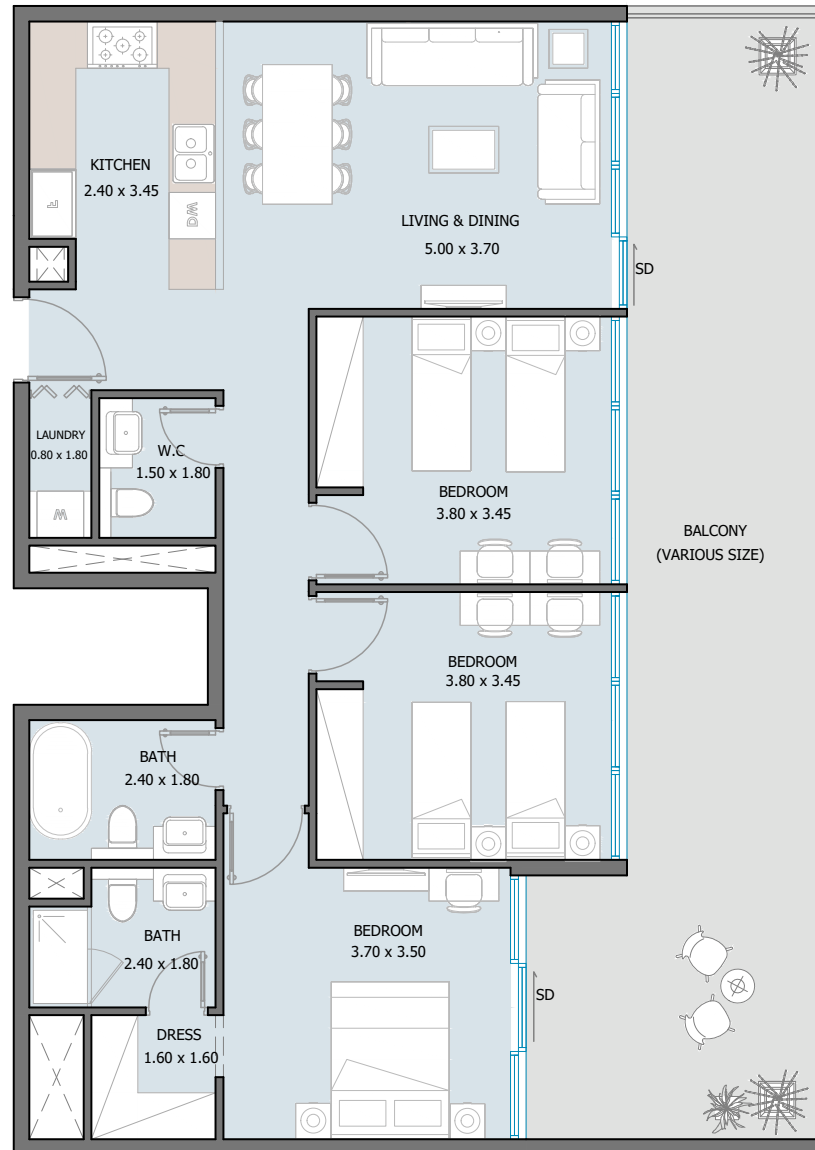
5th Floor



Internal Area	1090.28 sq.ft
Outdoor Area	1100.39 sq.ft
Total Area	2190.67 sq.ft

3 BEDROOM TYPE H

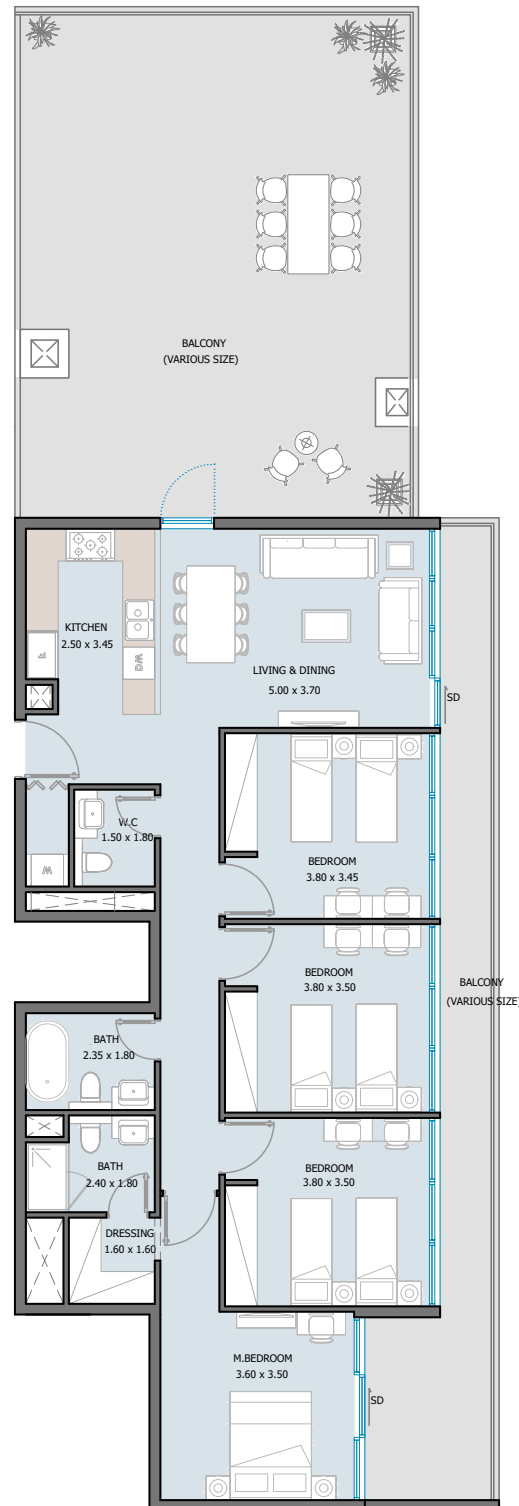
3rd - 4th Floor



Internal Area	1092.86 sq.ft
Outdoor Area	379.97 to 467.58 sq.ft
Total Area	1472.82 to 1560.44 sq.ft

4 BEDROOM TYPE A

5th Floor

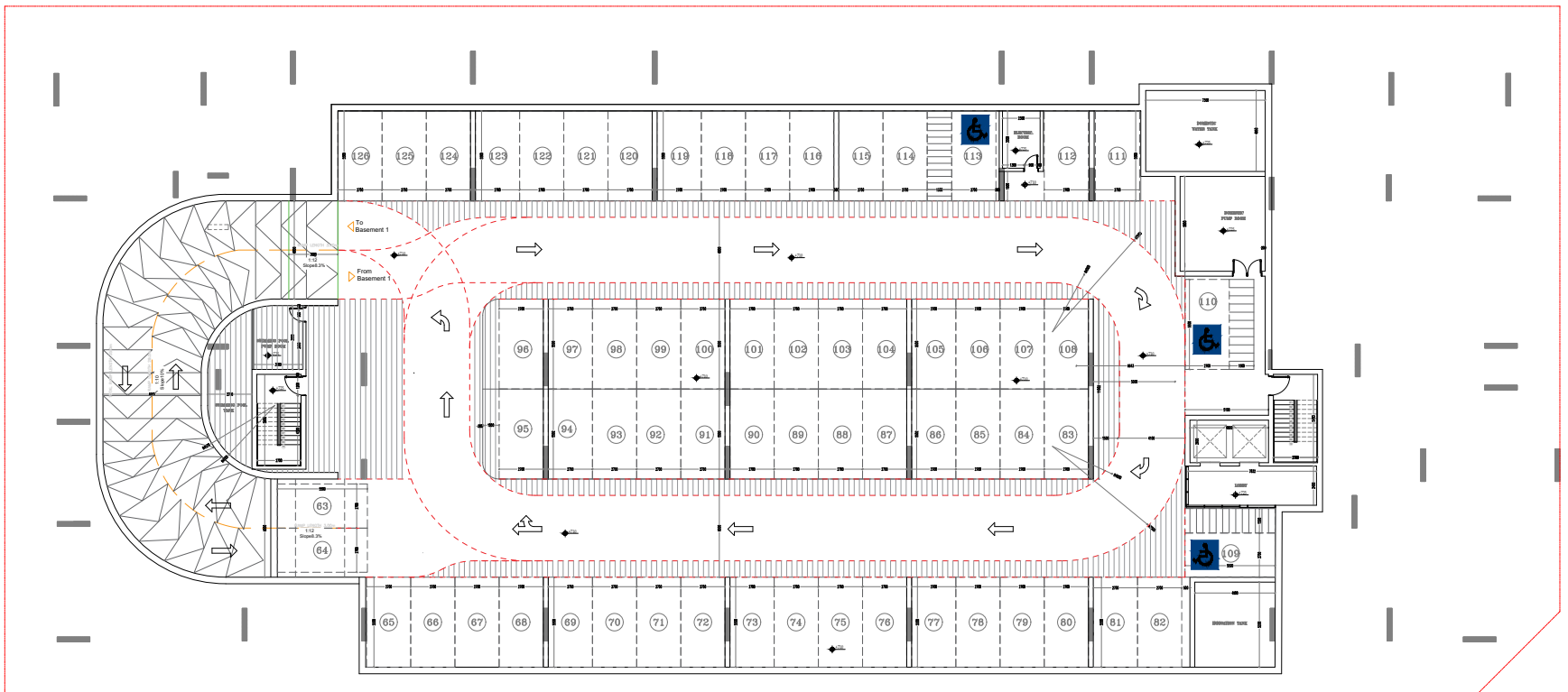


Internal Area	1315.46 sq.ft
Outdoor Area	1023.75 to 1276.60 sq.ft
Total Area	2339.21 to 2592.05 sq.ft



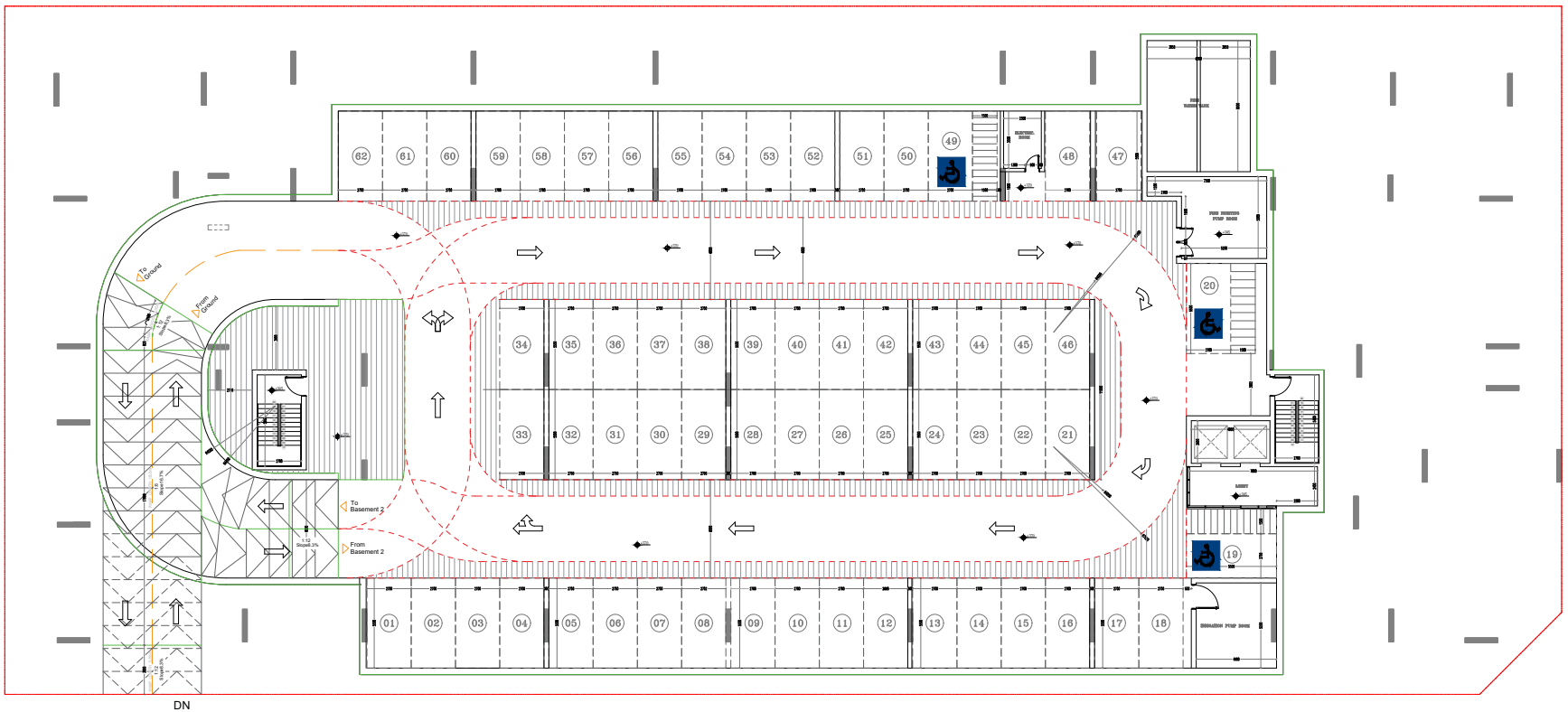
TOWER
FLOOR PLANS

BASEMENT 02 FLOOR



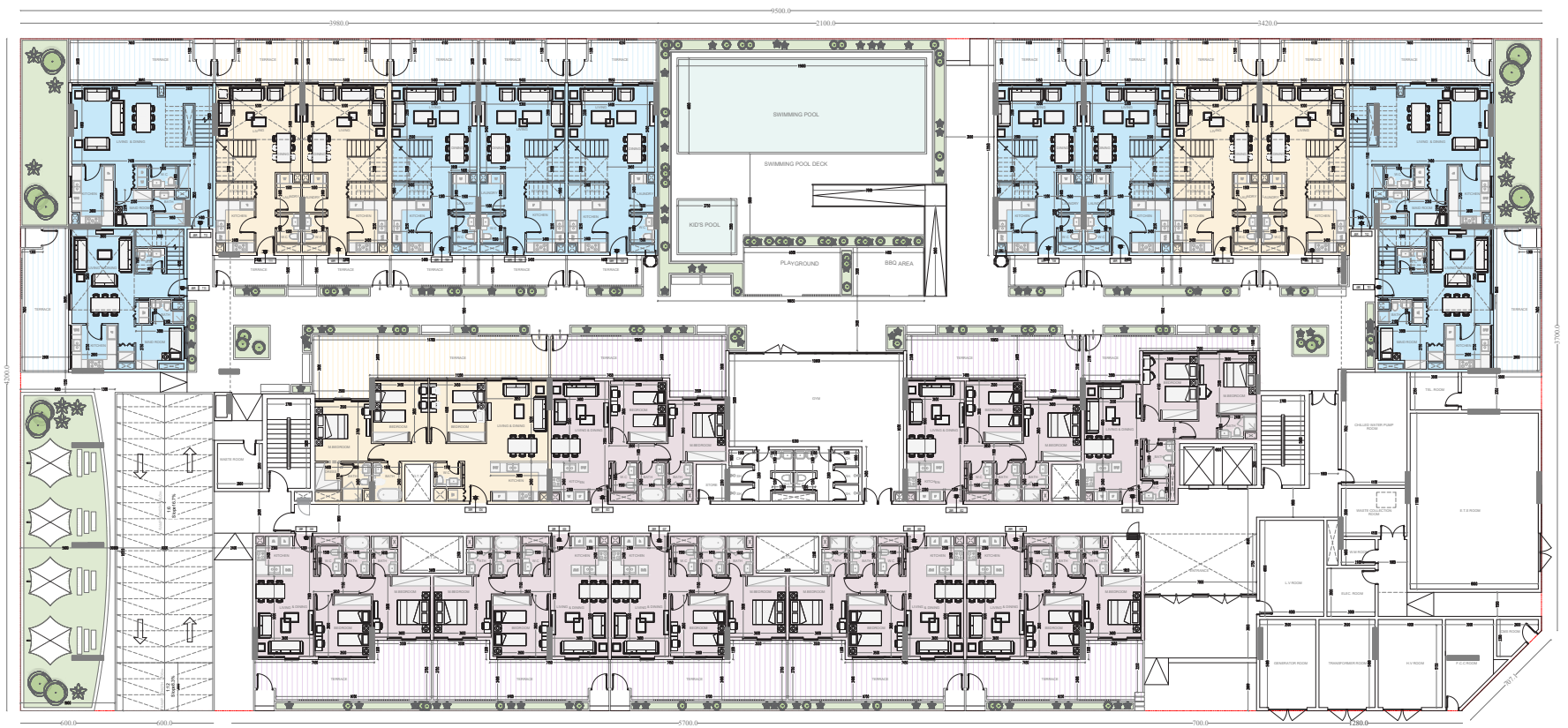
○ 2B ○ 3B ○ 4B

BASEMENT 01 FLOOR



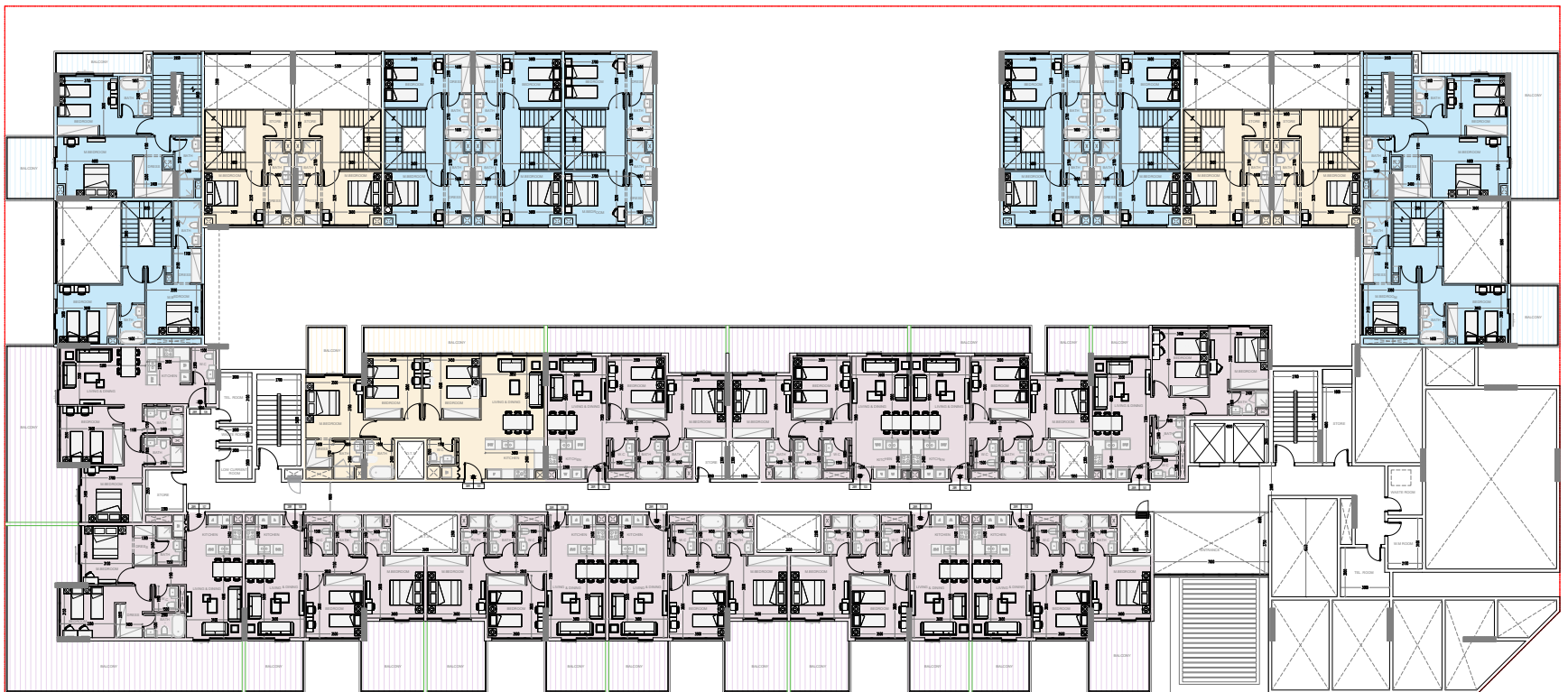
○ 2B ○ 3B ○ 4B

GROUND FLOOR



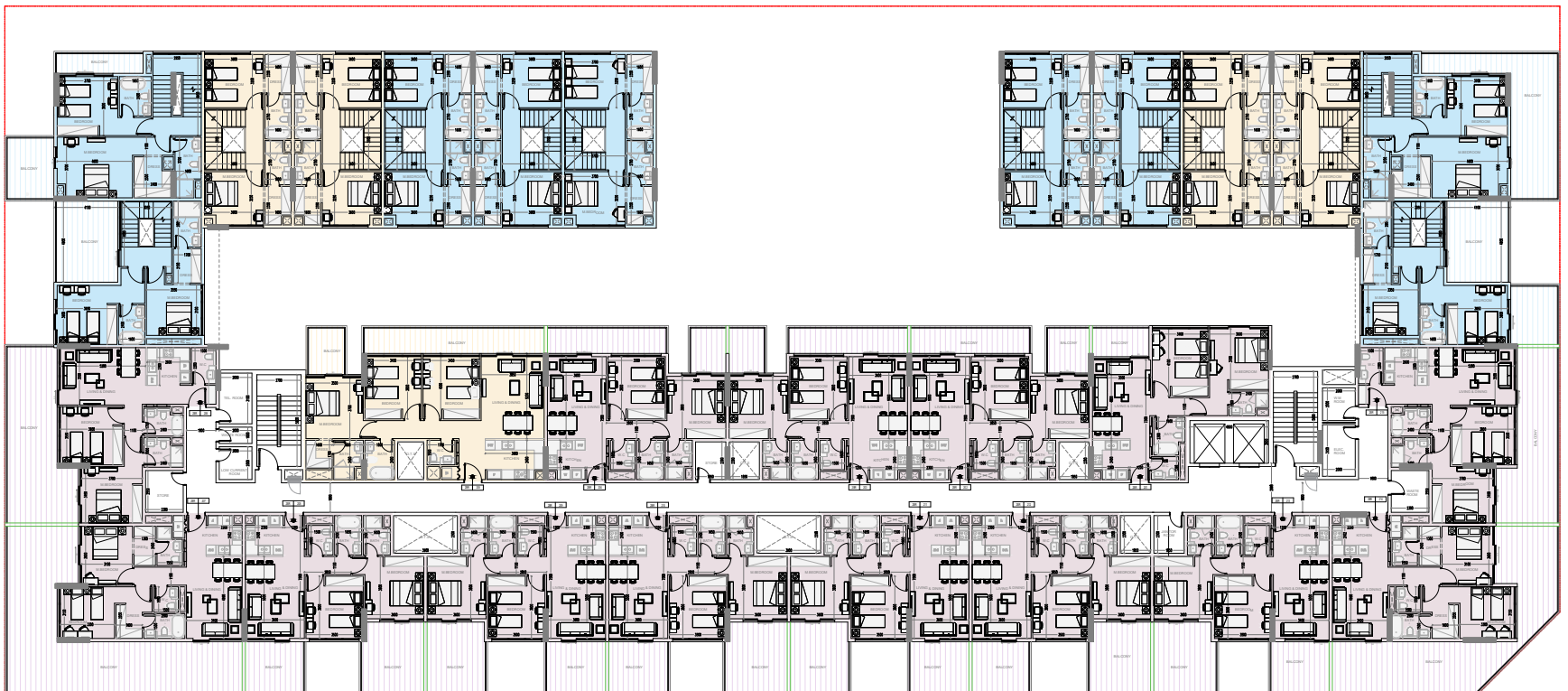
○ 2B ○ 3B ○ 4B

1ST FLOOR

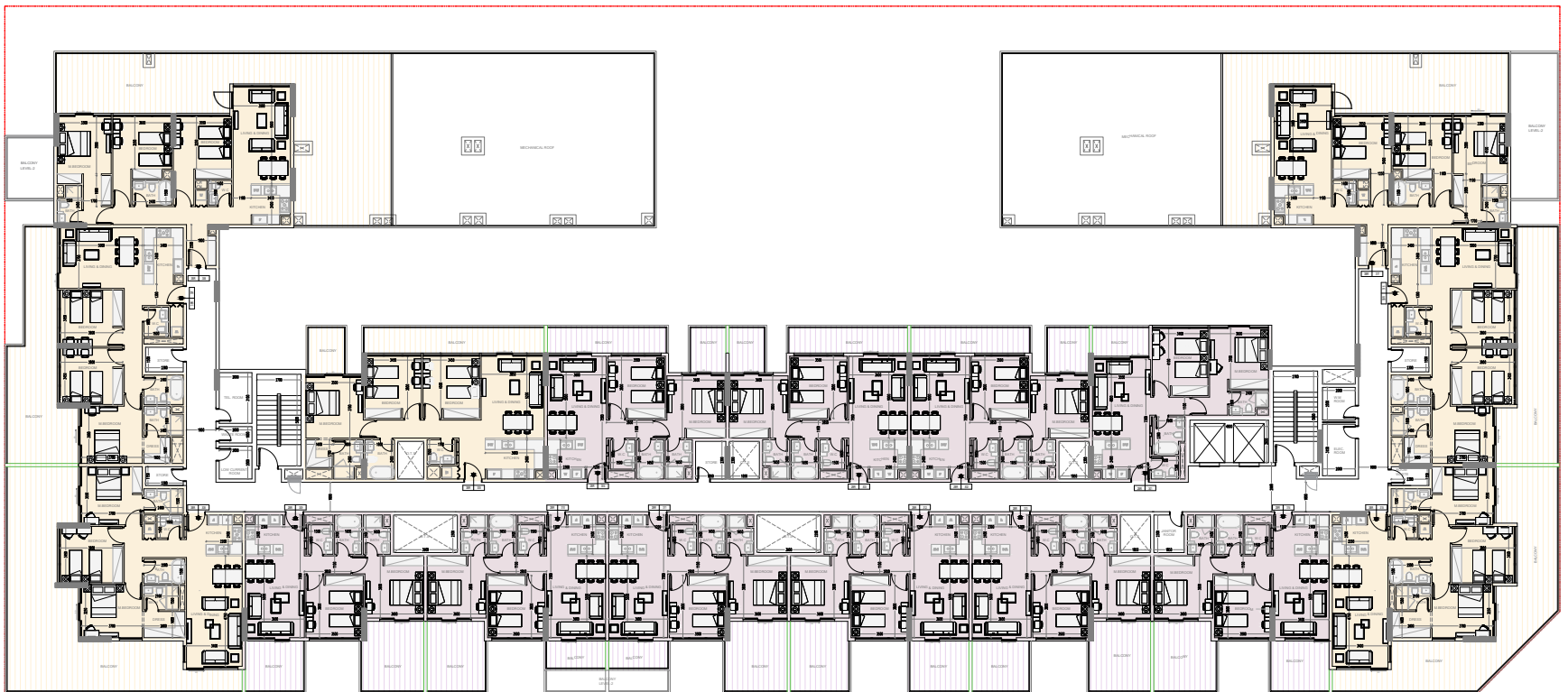


○ 2B ○ 3B ○ 4B

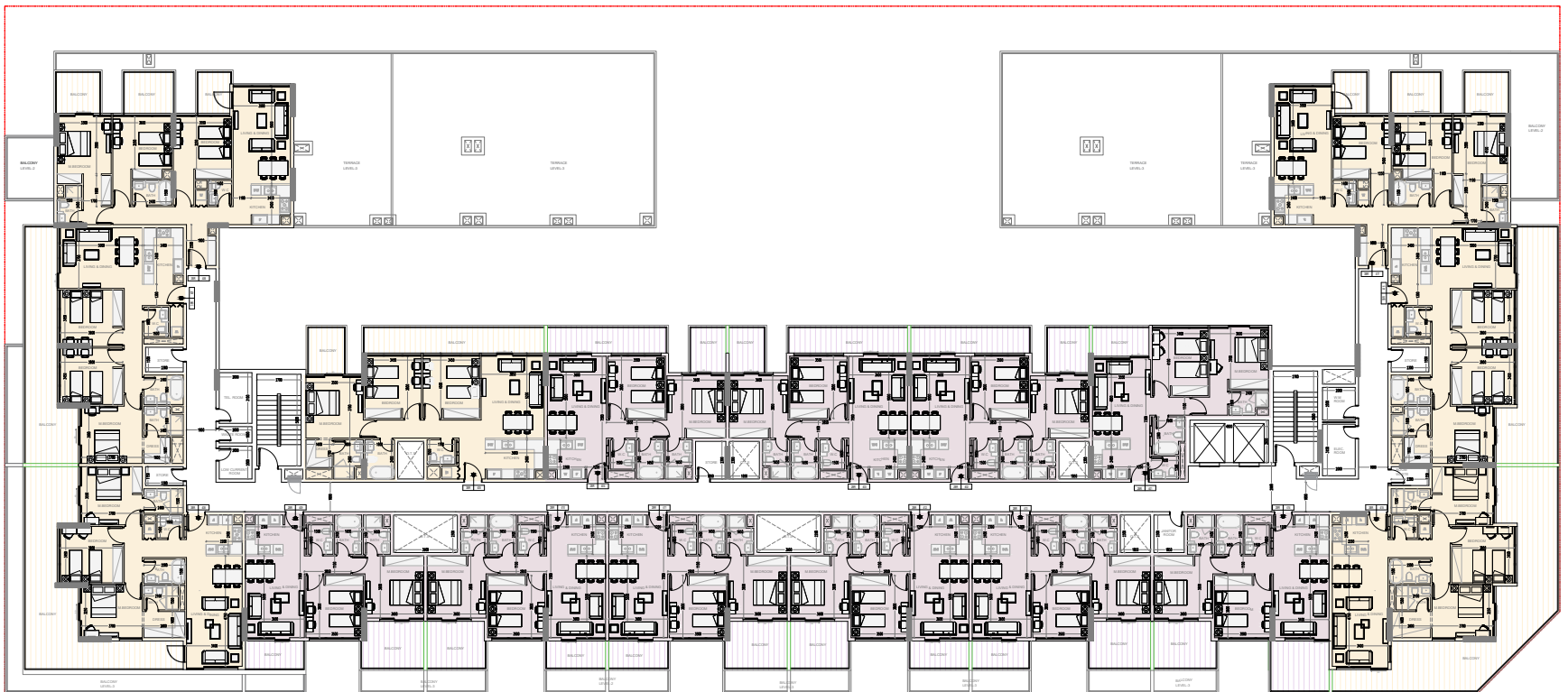
2ND FLOOR



3RD FLOOR



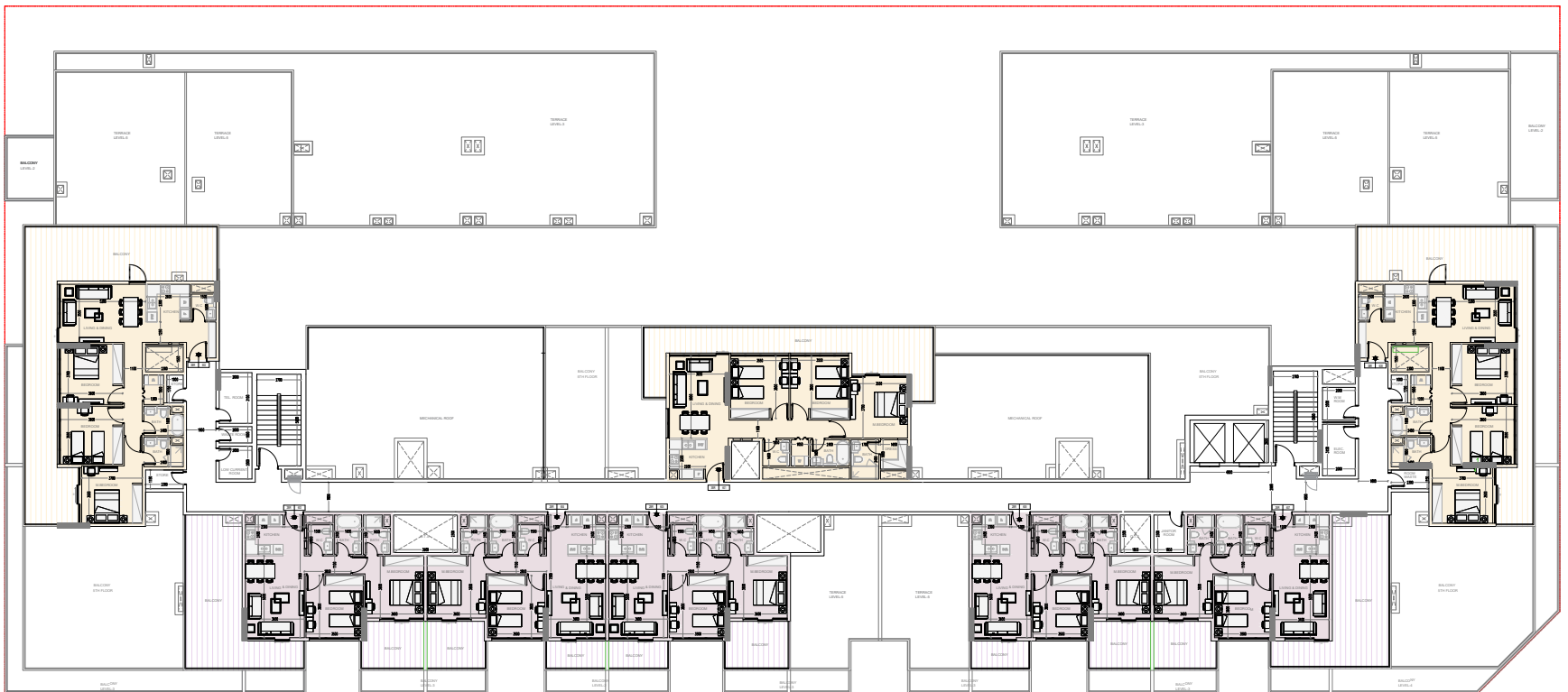
4TH FLOOR



5TH FLOOR

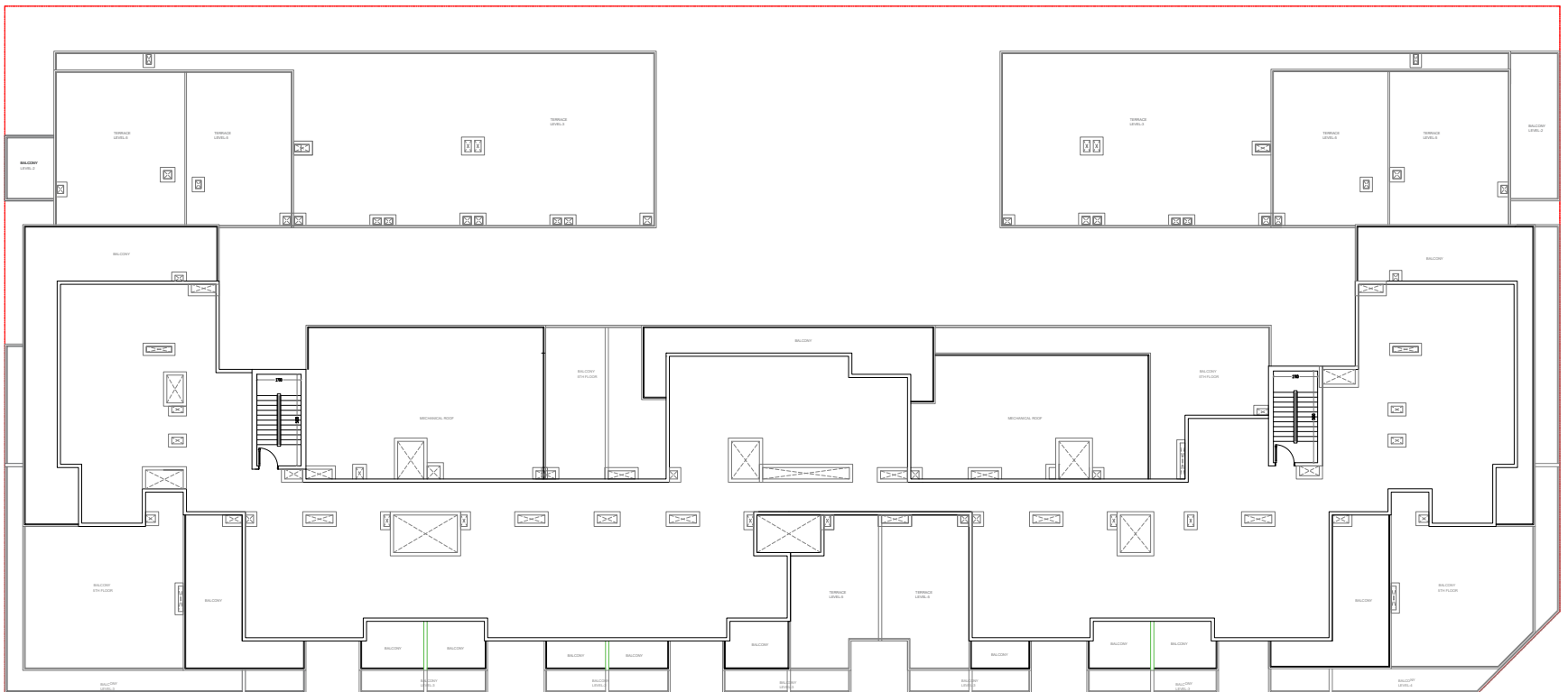


6TH FLOOR



○ 2B ○ 3B ○ 4B

7TH FLOOR



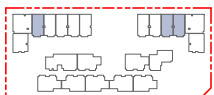
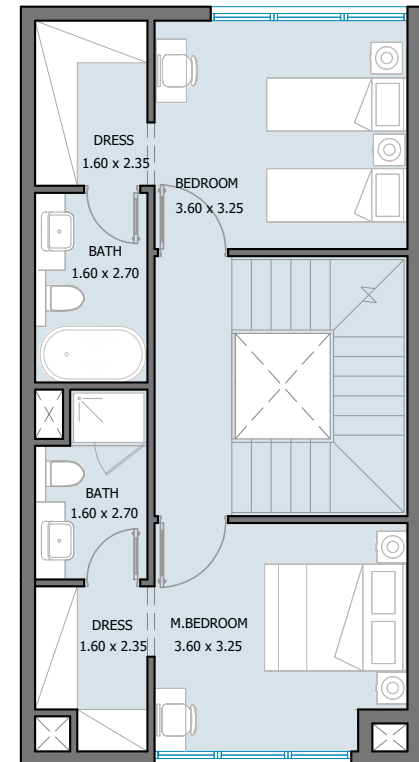
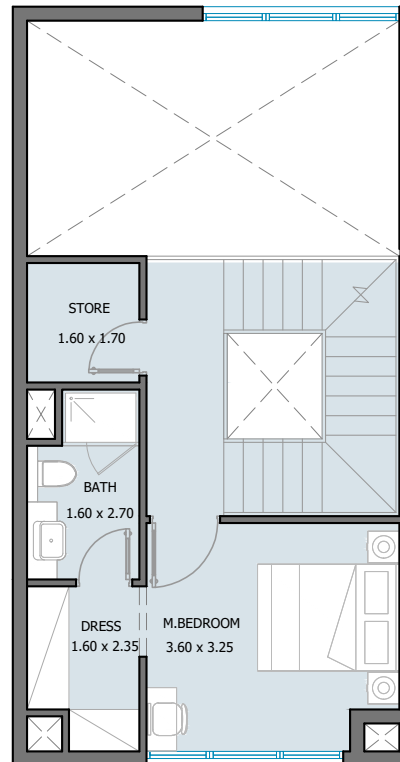
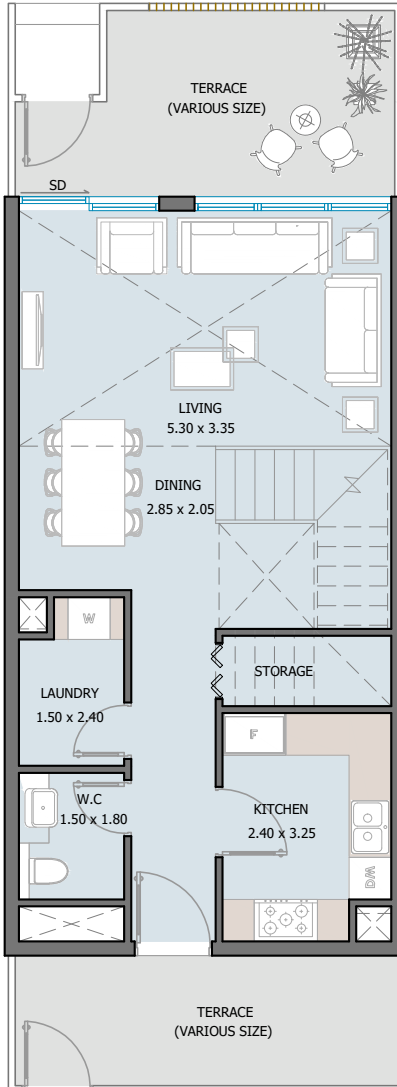




TOWNHOUSE
UNIT TYPES

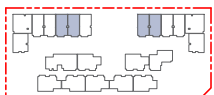
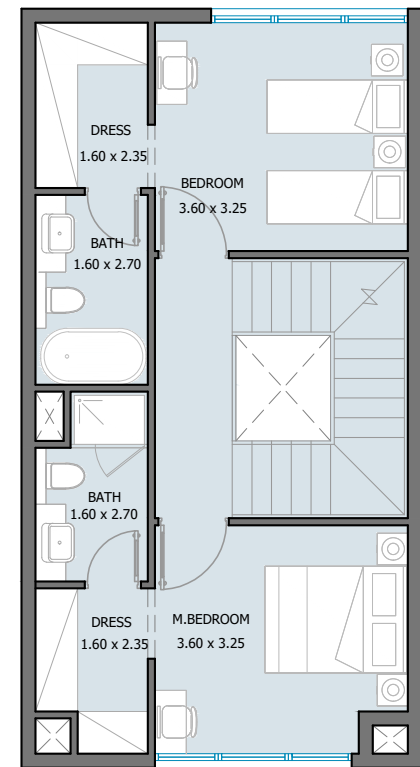
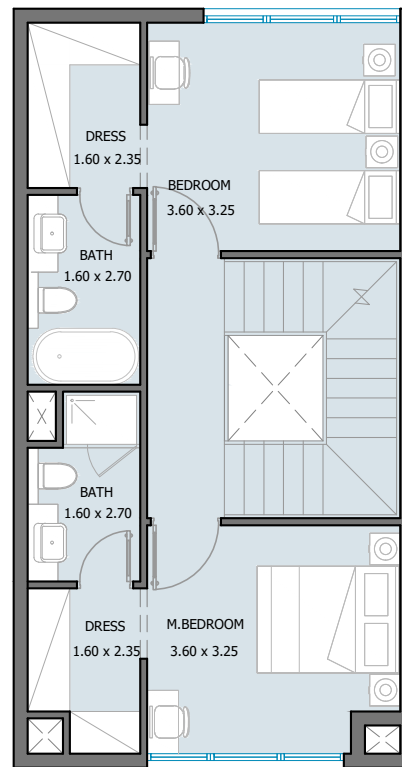
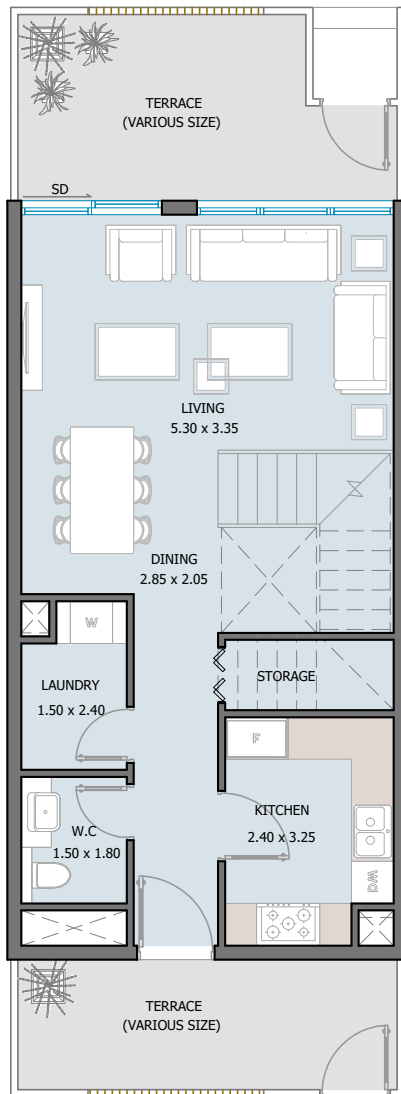
3 BEDROOM TYPE A

Townhouse



Internal Area	1613.51 sq.ft
Outdoor Area	260.70 sq.ft
Total Area	1874.21 sq.ft

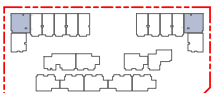
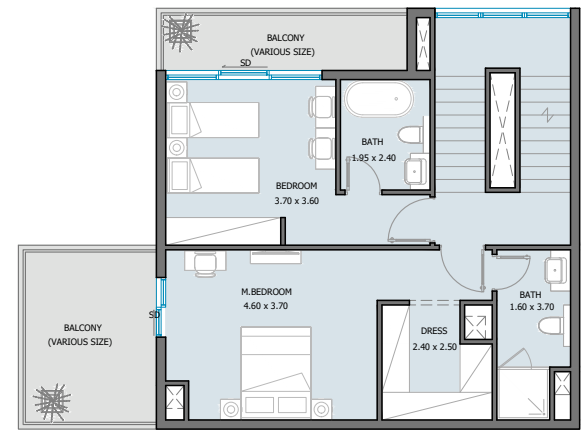
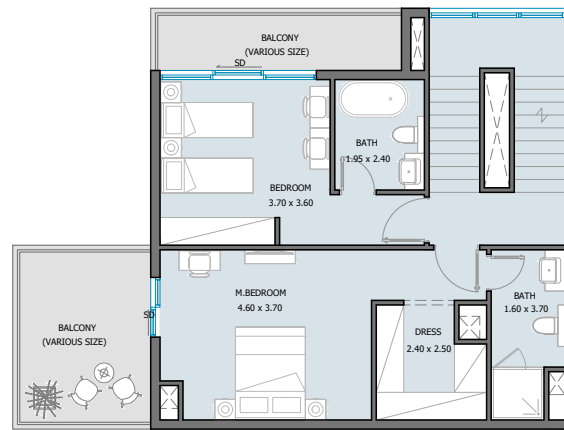
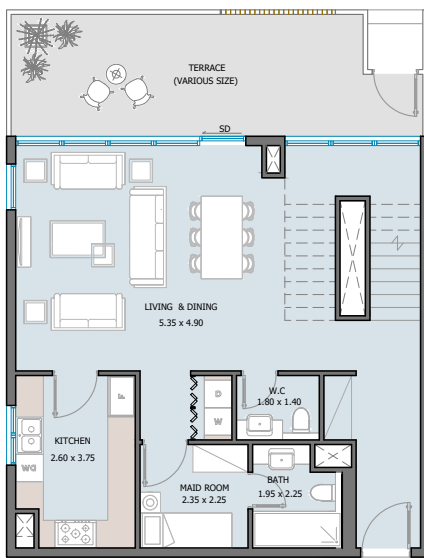
4 BEDROOM TYPE A Townhouse



Internal Area	1823.30 to 1855.16 sq.ft
Outdoor Area	246.82 to 260.70 sq.ft
Total Area	2084.0 to 2101.97 sq.ft

4 BEDROOM TYPE B

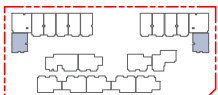
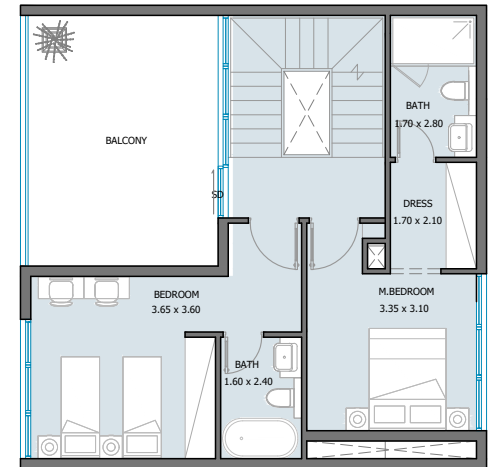
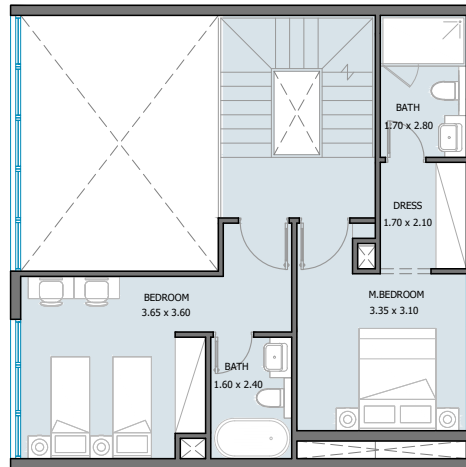
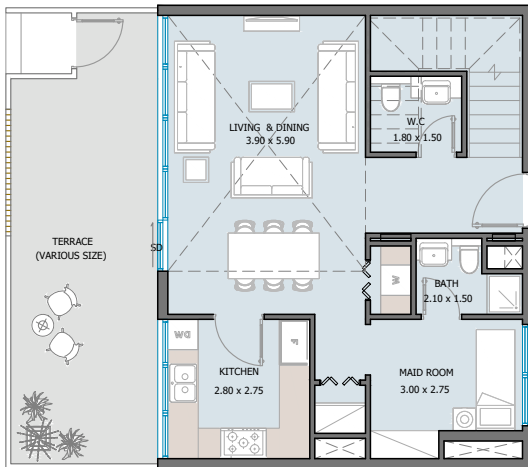
Townhouse



Internal Area	2402.50 sq.ft
Outdoor Area	667.79 to 1000.40 sq.ft
Total Area	3070.29 to 3402.90 sq.ft

4 BEDROOM TYPE C

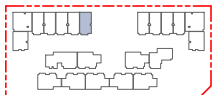
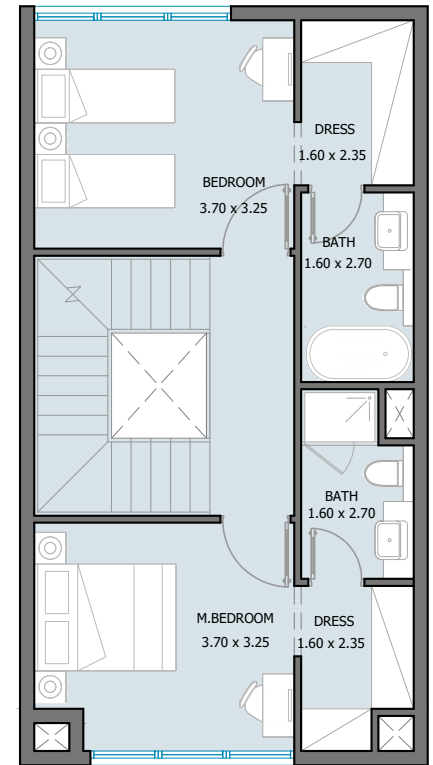
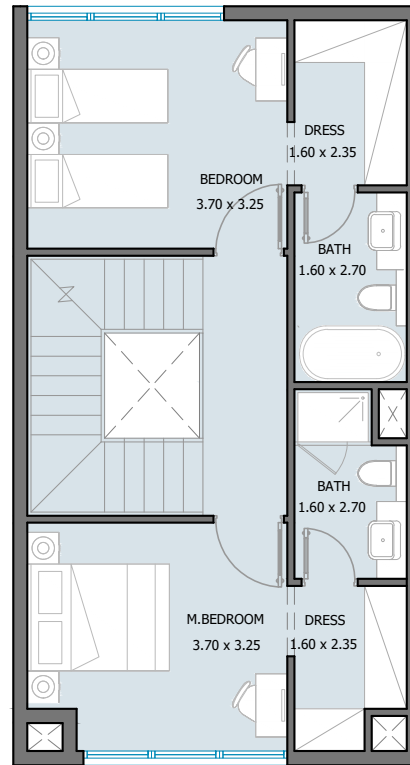
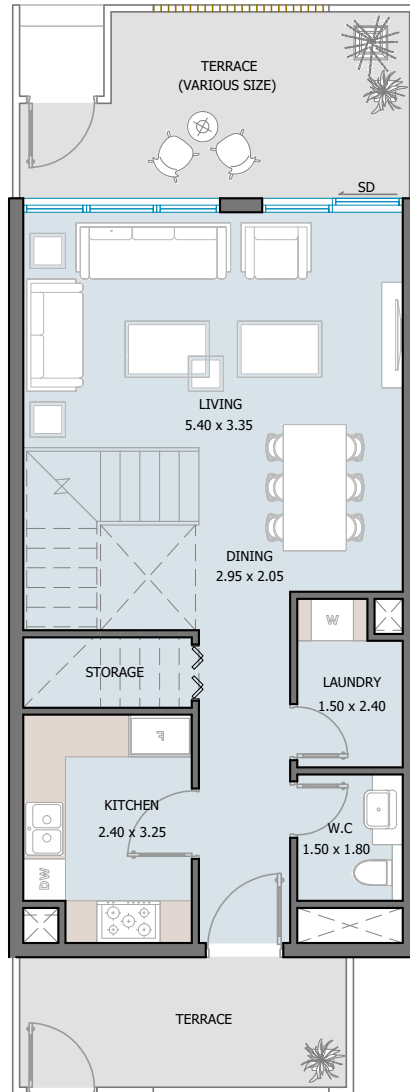
Townhouse



Internal Area	1937.50 sq.ft
Outdoor Area	491.69 to 736.14 sq.ft
Total Area	2429.20 to 2673.65 sq.ft

4 BEDROOM TYPE D

Townhouse



Internal Area	1888.31 sq.ft
Outdoor Area	251.98 sq.ft
Total Area	2140.29 sq.ft

Reportage.

Abu Dhabi-UAE | Head Office

Tamouh Tower
28th Floor, Al Reem Island
P.O. Box: 111949
Tollfree: +971 800 77 55 2
info@reportageuae.com

Baku, Azerbaijan

Azerbaijan, Baku City,
Uzeyir Hajibəyov 33 street
+994 10 236 40 46
Info@reportageaz.com

Dubai-UAE

Anantara Business Tower
3rd Floor, Business Bay
P.O. Box: 27446
Tollfree: +971 800 77 55 2
info@reportageuae.com

Cairo-Egypt

Building 217
North Teseen St.
New Cairo
T: +20 12 0008 1190
info@reportageeg.com

Istanbul-Türkiye

Maslak Mh. Sümer Sk.
No:4, İç Kapı No:3, Bodrum Kat,
Maslak Office Building (MOB) Sarıyer
T: +90 530 774 9595
info@reportage.com.tr

Riyadh-KSA

Building No. 3230
Al Aflaj St., Al Suwaidi
P.O. Box 12791
T: +966 11 215 1110
info@reportageuae.com

Moscow-Russia

Yefremova Street 10s1, k4/4
bld sadovye kvartaly
P.O. Box 119048
info@reportagerussia.com

Kampala, Uganda

Plot 4, Philip Road
Near German Embassy
Kololo, Kampala, Uganda
+256 756 111 434 | +256 763 331 572
info@reportageug.com

Lahore - Pakistan

Plaza No. 185, Broadway
Commercial phase 8, DHA Lahore
+923309991111
Info@reportageempire.com

Kigali, Rwanda

KG 334 ST 10, Nyarutarama,
Kigali, Rwanda
+250738532168 | +250794100607
info@reportagerw.com

Nairobi, Kenya

46 Kabasiran, Lavington
P.O. box 38802-00623
Tel. +254 754 108108 / +254 208 108108

Lagos, Nigeria

No. 2 Obudu Close, Osborne Foreshore
Estate, Phase 1, Ikoyi, Lagos Nigeria
+234 810 859 9924
Info@reportage.ng

For more information, visit reportageuae.com or call
800 77 55 2 | +971 50 244 1078



Legal Disclaimer:

The information contained in this brochure is confidential and is for the exclusive use of the recipient. This brochure may not be reproduced, distributed, delivered, or furnished to any person without the prior written approval of Reportage Properties. No representation or warranty (expressed or implied) is made or can be given with respect to the accuracy or completeness of the information herein, or that any future offer of units or apartments in the project will conform to the terms described herein. Nothing in this leaflet should be constructed as financial, legal, tax or regulatory advice. All accessories such as electronics, furniture, white goods, decorative elements and so forth included in this brochure are not part of the standard unit and used for illustration purposes only. All plans, layouts, pictures, renderings, information and details included in this brochure are indicative only and may change at any time up to the final 'as built' status in accordance with final designs of the project and regulatory approvals and planning permissions.



SILA

MASDAR CITY

Reportage.

REPORTAGEUAE.COM