

# Victoria Palms

CONNECT TO DISCONNECT



CONNECT TO DISCONNECT

## ABOUT REPORTAGE

Reportage Group is one of the largest private international developers with projects in the Middle East and Europe. We are focused and consistent in our objective to provide innovative, modern, and affordable housing solutions that not only offer our investors an outstanding value but also provide home buyers a safe place to live in. Our mission is to be amongst the most trusted real estate companies globally by developing and providing homes that are equally elegant and affordable and provide you with a sense of belonging. We look forward to the upcoming years, and aspire to expand our real estate business globally.

Building Legacies  
Since 2014



# Discover Uganda The Pearl of Africa

Uganda, often referred to as the Pearl of Africa, is a land of breathtaking landscapes, rich biodiversity, and vibrant culture. Home to the majestic Lake Victoria, the country boasts lush greenery, tropical forests, and abundant wildlife, making it one of the most scenic destinations in Africa. Entebbe, located along the shores of Lake Victoria, is known for its tranquility, well-preserved nature reserves, and a unique blend of modern infrastructure with untouched natural beauty. Whether it's exploring the iconic Entebbe Botanical Gardens, enjoying water sports on the lake, or immersing in the warmth of Ugandan hospitality, the country offers an unparalleled living experience.





## Victoria Palms Connect to Disconnect

Victoria Palms is a gated community nestled in the heart of Uganda by the renowned Victoria lake, the largest in Africa, famous for being the nexus between Uganda, Kenya, and Tanzania. The project is built for those who believe that the pursuit of happiness lies beyond material things. Victoria Palms is about being rooted and in balance, where souls connect in the authenticity of the African nature and minds disconnect.



## The Beauty of Entebbe, The Comfort of Home

Surrounded by lush forests, scenic gardens, and breathtaking lake views, Victoria Palms is an invitation to escape the noise of the city and embrace a peaceful, nature-filled lifestyle. The project seamlessly blends contemporary architecture with elegant Italian-inspired design, ensuring the highest standards of comfort and quality.



# Exclusive Living at Victoria Palms

Premium Residences Designed for Elegance



Modern Townhouses infused with Italian-inspired aesthetics



Gated community with 24/7 security and guard rooms



Private parking for each villa



Spacious balconies & terraces for breathtaking views



Luxurious rooftop with Jacuzzi for ultimate relaxation



All bedrooms with en-suite bathrooms for privacy and convenience



Maid's room in each townhouse



High-end finishes & fully tiled bathrooms





Your sanctuary in the heart of Entebbe.  
Connect with Nature, Disconnect from  
the Ordinary.

Victoria Palms  
CONNECT TO DISCONNECT

# Unparalleled Amenities for an Exceptional Lifestyle

Premium Residences Designed for Elegance



Large Swimming Pool and Kids' Pool



Gymnasium



Clubhouse Building and Multipurpose Hall



Lounge Terrace and Café



Private green spaces for relaxation

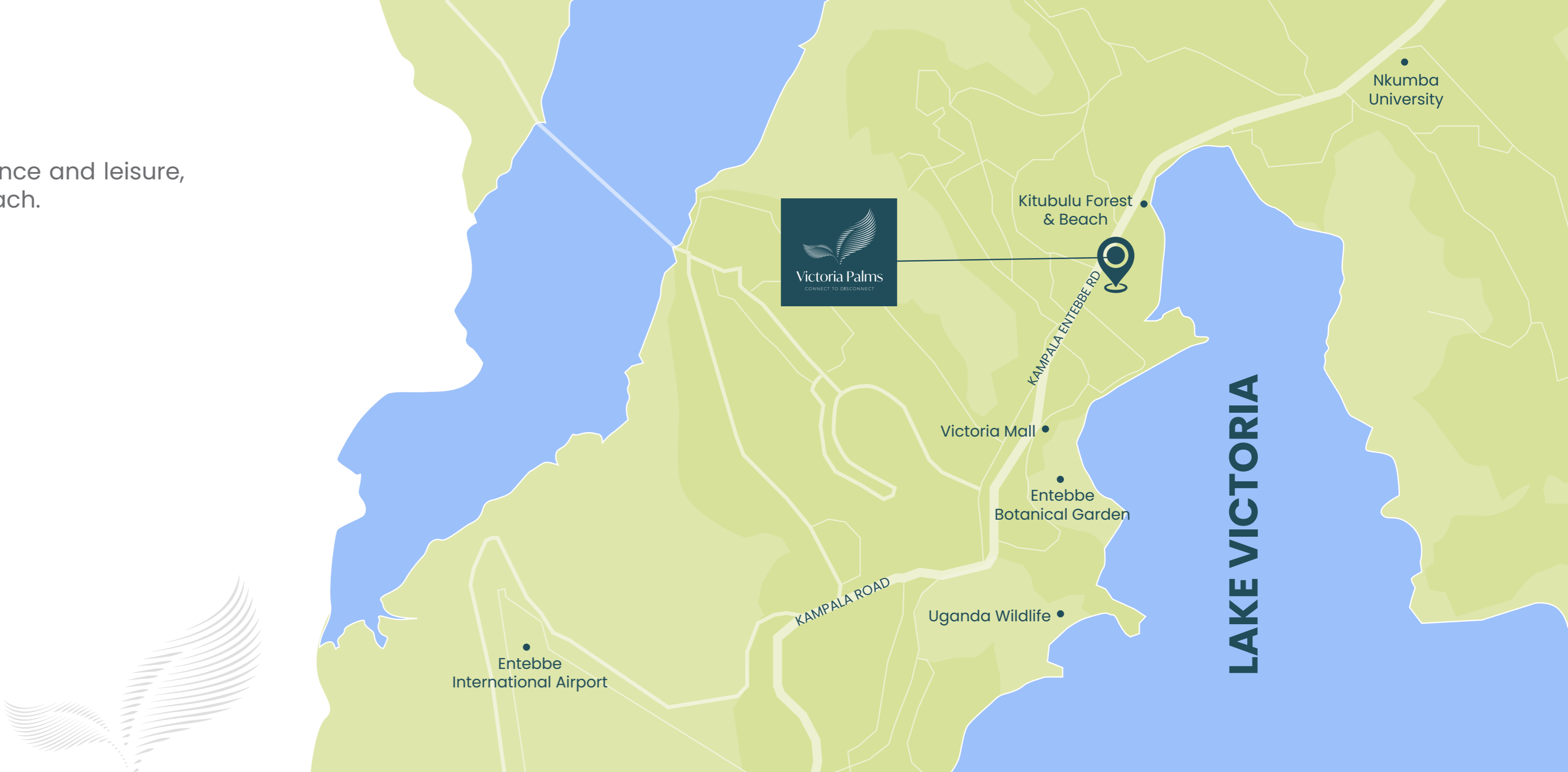




# CONNECTED TO EVERYTHING

Victoria Palms is ideally situated for convenience and leisure, ensuring that everything you need is within reach.

- 4 Min. walk to Kitubulu Forest & Beach
- 8 Min. walk to Laker Victoria
- 4 Min. walk to Victoria Mall
- 4 Min. drive to Entebbe Sailing Club
- 6 Min. drive to Entebbe Gold Course Club
- 8 Min. drive to Entebbe Zoo & Botanical Garden
- 8 Min. drive to Nkumba University
- 11 Min. drive to Entebbe International Airport





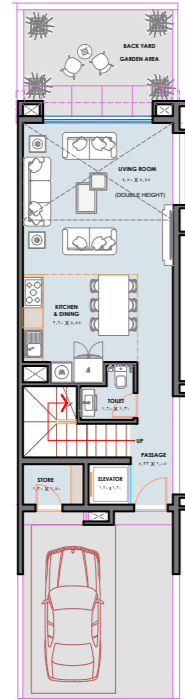
Victoria Palms  
CONNECTED. DISCONNECT.



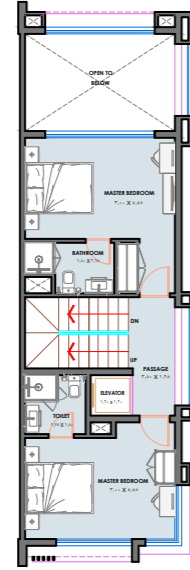
# UNIT MIX

<b>Total Plot Area</b>	6,288.71 sq.m
<b>Total Units</b>	44 Townhouses
<b>Configuration</b>	Ground + 3 Floors

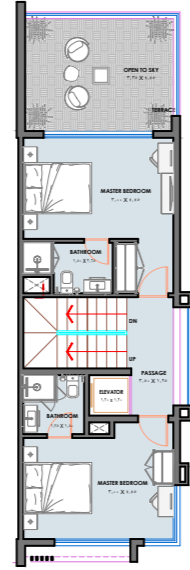
# Townhouse 4B | Type A



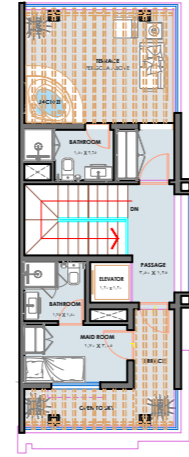
GROUND FLOOR



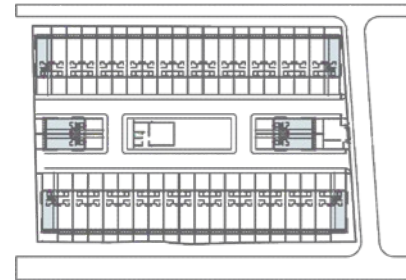
FIRST FLOOR



SECOND FLOOR



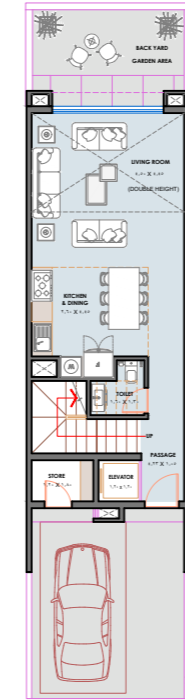
THIRD FLOOR



All drawings and dimensions are approximate. Drawings are not to scale and are subject to change without notice. The developer reserves the right to make re-revisions. The units are measured at typical floors in the building and columns may vary in size depending on the floor level. The furnishing and accessories shown are for representation only. The availability, length and width of the balcony varies depending on which floor and which orientation the unit is located within the building. There will be slight differences in the internal areas between the same unit types depending on the shaft sizes that go through the units.

Internal Area	2127.66 sq.ft
Outdoor Area	897.89 to 1456.92 sq.ft
Total Area	3025.55 to 3584.58 sq.ft

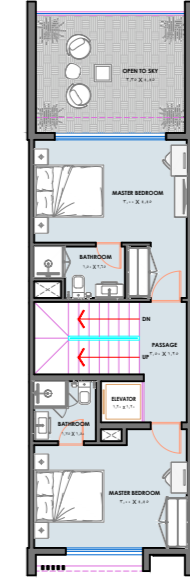
# Townhouse 4B | Type B



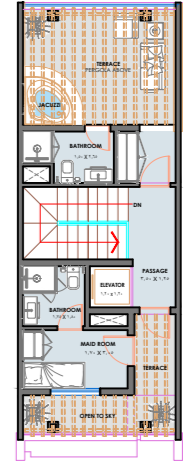
GROUND FLOOR



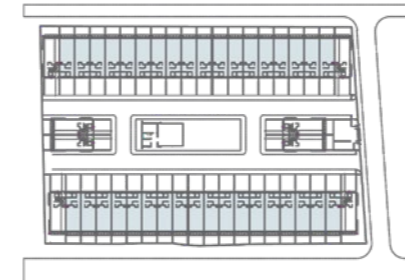
FIRST FLOOR



SECOND FLOOR



THIRD FLOOR



All drawings and dimensions are approximate. Drawings are not to scale and are subject to change without notice. The developer reserves the right to make re-revisions. The units are measured at typical floors in the building and columns may vary in size depending on the floor level. The furnishing and accessories shown are for representation only. The availability, length and width of the balcony varies depending on which floor and which orientation the unit is located within the building. There will be slight differences in the internal areas between the same unit types depending on the shaft sizes that go through the units.

Internal Area	2071.32 sq.ft
Outdoor Area	890.39 to 964.68 sq.ft
Total Area	2961.71 to 3036 sq.ft

# MASTERPLAN



# Reportage.

## Abu Dhabi-UAE | Head Office

Tamouh Tower  
28<sup>th</sup> Floor, Al Reem Island  
P.O. Box: 111949  
Tollfree: +971 800 77 55 2  
info@reportageuae.com

## Dubai-UAE

Anantara Business Tower  
3<sup>rd</sup> Floor, Business Bay  
P.O. Box: 27446  
Tollfree: +971 800 77 55 2  
info@reportageuae.com

## Cairo-Egypt

Building 217  
North Teseen St.  
New Cairo  
T: +20 12 0008 1190  
info@reportageeg.com

## Istanbul-Türkiye

Maslak Mh. Sümer Sk.  
No:4, İç Kapı No:3, Bodrum Kat,  
Maslak Office Building ( MOB) Sanyer  
T: +90 530 774 9595  
info@reportage.com.tr

## Riyadh-KSA

Building No. 3230  
Al Aflaj St., Al Suwaidi  
P.O. Box 12791  
T: +966 11 215 1110  
info@reportageuae.com

## Moscow-Russia

Yefremova Street 10s1, k4/4  
bld sadovye kvartaly  
P.O. Box 119048  
info@reportagerussia.com

## Kampala, Uganda

Plot 4, Philip Road  
Near German Embassy  
Kololo, Kampala, Uganda  
+256 756 111 434 | +256 763 331 572  
info@reportageug.com

## Lahore - Pakistan

Plaza No. 185, Broadway  
Commercial phase 8, DHA Lahore  
+92 42 111 999 911  
Info@reportageempire.com

## ISLAMABAD Pakistan

Building No. 14, Sector-F,  
Near Giga Mall, Phase 2,  
DHA, Islamabad.  
+92 42 111 999 911  
Info@reportageempire.com

## Kigali, Rwanda

KG 334 ST 10, Nyarutarama,  
Kigali, Rwanda  
+250738532168 | +250794100607  
info@reportagerw.com

---

For more information, visit [reportageuae.com](http://reportageuae.com)  
or call 800 77 55 2 | +971 50 244 1078

---



### Legal Disclaimer:

The information contained in this brochure is confidential and is for the exclusive use of the recipient. This brochure may not be reproduced, distributed, delivered, or furnished to any person without the prior written approval of Reportage Properties. No representation or warranty (expressed or implied) is made or can be given with respect to the accuracy or completeness of the information herein, or that any future offer of units or apartments in the project will conform to the terms described herein. Nothing in this leaflet should be construed as financial, legal, tax or regulatory advice. All accessories such as electronics, furniture, white goods, decorative elements and so forth included in this brochure are not part of the standard unit and used for illustration purposes only. All plans, layouts, pictures, renderings, information and details included in this brochure are indicative only and may change at any time up to the final 'as built' status in accordance with final designs of the project and regulatory approvals and planning permissions.



**R.**