

# Victoria Palms

CONNECT TO DISCONNECT

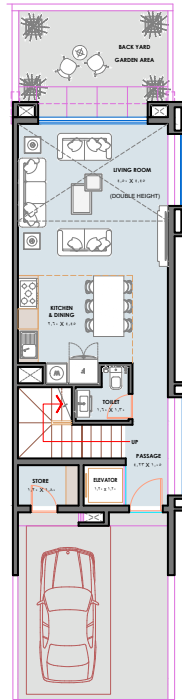




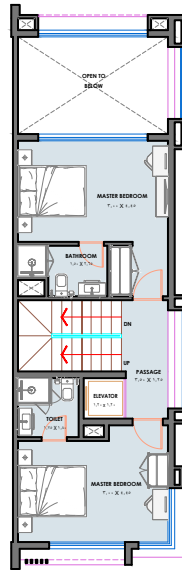
# UNIT MIX

<b>Total Plot Area</b>	6,288.71 sq.m
<b>Total Units</b>	44 Townhouses
<b>Configuration</b>	Ground + 3 Floors

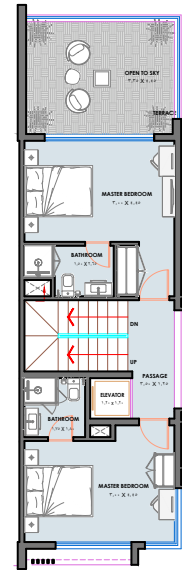
# Townhouse 4B | Type A



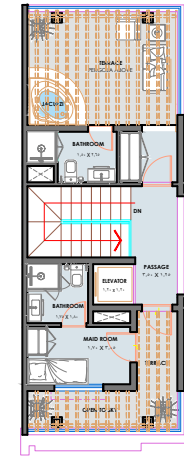
GROUND FLOOR



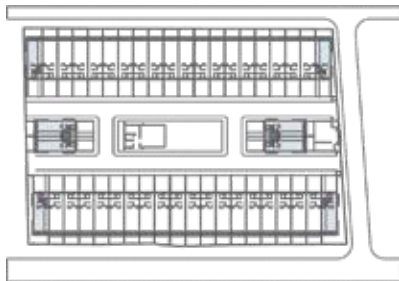
FIRST FLOOR



SECOND FLOOR



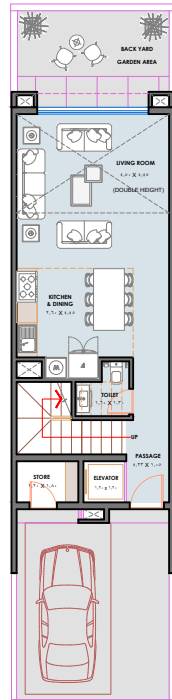
THIRD FLOOR



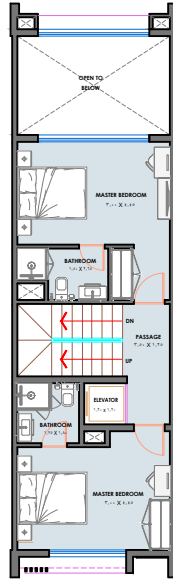
All drawings and dimensions are approximate. Drawings are not to scale and are subject to change without notice. The developer reserves the right to make re-visons. The units are measured at typical floors in the building and columns may vary in size depending on the floor level. The furnishing and accessories shown are for representation only. The availability, length and width of the balcony varies depending on which floor and which orientation the unit is located within the building. There will be slight differences in the internal areas between the same unit types depending on the shaft sizes that go through the units.

Internal Area	2127.66 sq.ft
Outdoor Area	897.89 to 1456.92 sq.ft
Total Area	3025.55 to 3584.58 sq.ft

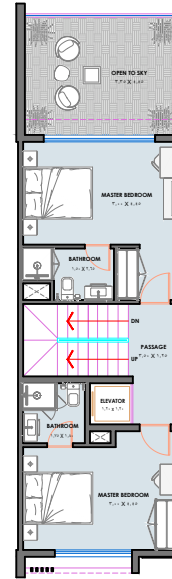
# Townhouse 4B | Type B



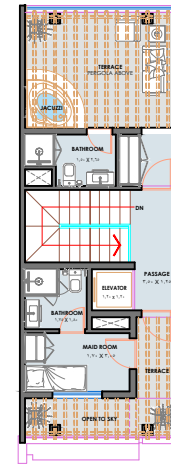
GROUND FLOOR



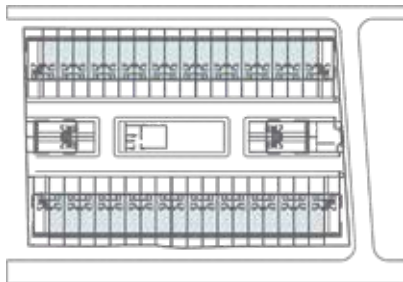
FIRST FLOOR



SECOND FLOOR



THIRD FLOOR

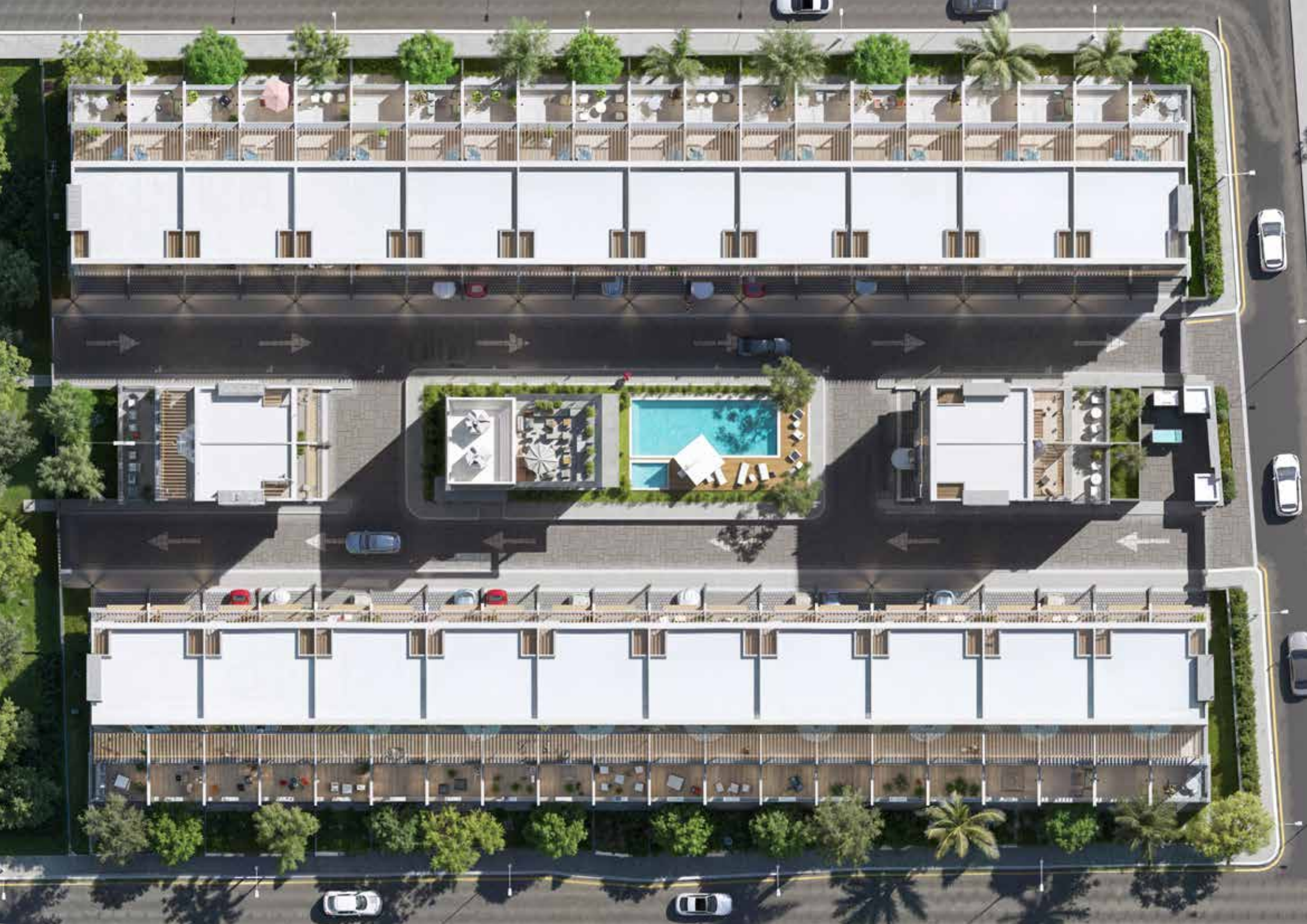


All drawings and dimensions are approximate. Drawings are not to scale and are subject to change without notice. The developer reserves the right to make re-visions. The units are measured at typical floors in the building and columns may vary in size depending on the floor level. The furnishing and accessories shown are for representation only. The availability, length and width of the balcony varies depending on which floor and which orientation the unit is located within the building. There will be slight differences in the internal areas between the same unit types depending on the shaft sizes that go through the units.

Internal Area	2071.32 sq.ft
Outdoor Area	890.39 to 964.68 sq.ft
Total Area	2961.71 to 3036 sq.ft

# MASTERPLAN





# Reportage.

## Abu Dhabi-UAE | Head Office

Tamouh Tower  
28<sup>th</sup> Floor, Al Reem Island  
P.O. Box: 111949  
Tollfree: +971 800 77 55 2  
info@reportageuae.com

## Dubai-UAE

Anantara Business Tower  
3<sup>rd</sup> Floor, Business Bay  
P.O. Box: 27446  
Tollfree: +971 800 77 55 2  
info@reportageuae.com

## Cairo-Egypt

Building 217  
North Teseen St.  
New Cairo  
T: +20 12 0008 1190  
info@reportageeg.com

## Istanbul-Türkiye

Maslak Mh. Sümer Sk.  
No:4, İç Kapı No:3, Bodrum Kat,  
Maslak Office Building ( MOB) Sarıyer  
T: +90 530 774 9595  
info@reportage.com.tr

## Riyadh-KSA

Building No. 3230  
Al Aflaj St., Al Suwaidi  
P.O. Box 12791  
T: +966 11 215 1110  
info@reportageuae.com

## Moscow-Russia

Yefremova Street 10s1, k4/4  
bld sadovye kvartaly  
P.O. Box 119048  
info@reportagerussia.com

## Kampala, Uganda

Plot 4, Philip Road  
Near German Embassy  
Kololo, Kampala, Uganda  
+256 756 111 434 | +256 763 331 572  
info@reportageug.com

## Lahore - Pakistan

Plaza No. 185, Broadway  
Commercial phase 8, DHA Lahore  
+92 42 111 999 911  
Info@reportageempire.com

## ISLAMABAD Pakistan

Building No. 14, Sector-F,  
Near Giga Mall, Phase 2,  
DHA, Islamabad.  
+92 42 111 999 911  
Info@reportageempire.com

## Kigali, Rwanda

KG 334 ST 10, Nyarutarama,  
Kigali, Rwanda  
+250738532168 | +250794100607  
info@reportagerw.com

---

For more information, visit [reportageuae.com](http://reportageuae.com)  
or call 800 77 55 2 | +971 50 244 1078

---



#### Legal Disclaimer:

The information contained in this brochure is confidential and is for the exclusive use of the recipient. This brochure may not be reproduced, distributed, delivered, or furnished to any person without the prior written approval of Reportage Properties. No representation or warranty (expressed or implied) is made or can be given with respect to the accuracy or completeness of the information herein, or that any future offer of units or apartments in the project will conform to the terms described herein. Nothing in this leaflet should be construed as financial, legal, tax or regulatory advice. All accessories such as electronics, furniture, white goods, decorative elements and so forth included in this brochure are not part of the standard unit and used for illustration purposes only. All plans, layouts, pictures, renderings, information and details included in this brochure are indicative only and may change at any time up to the final 'as built' status in accordance with final designs of the project and regulatory approvals and planning permissions.



**R.**